



## Rabbit Anti-MHC class I/HLA-C antibody

SL10251R

|                               |   |
|-------------------------------|---|
| <b>Product Name:</b>          | MHC class I/HLA-C   |
| <b>Chinese Name:</b>          | 组织相容性复合体蛋白1抗体   |
| <b>Alias:</b>                 | 1C07_HUMAN; Cw-7 alpha chain; D6S204; HLA class I histocompatibility antigen; HLA class I histocompatibility antigen, C alpha chain; HLA class I histocompatibility antigen, Cw-1 alpha chain; HLA-C; HLA-C histocompatibility type; HLA-Cw; HLA-JY3; HLAC; HLC-C; human leukocyte antigen-C alpha chain; major histocompatibility antigen HLA-C; major histocompatibility complex, class I, C; MHC class I antigen; MHC class I antigen Cw 1; MHC class I antigen Cw*7; MHC class I antigen heavy chain HLA-C; PSORS1. |
| <b>Organism Species:</b>      | Rabbit  |
| <b>Clonality:</b>             | Polyclonal  |
| <b>React Species:</b>         | Human,Mouse,Rat,  |
| <b>Applications:</b>          | ELISA=1:500-1000IHC-P=1:400-800IHC-F=1:400-800ICC=1:100-500IF=1:100-500 (Paraffin sections need antigen repair)<br>not yet tested in other applications.<br>optimal dilutions/concentrations should be determined by the end user.  |
| <b>Molecular weight:</b>      | 45kDa   |
| <b>Cellular localization:</b> | The cell membrane   |
| <b>Form:</b>                  | Lyophilized or Liquid   |
| <b>Concentration:</b>         | 1mg/ml  |
| <b>immunogen:</b>             | KLH conjugated synthetic peptide derived from human MHC class I:81-180/366<Extracellular>   |
| <b>Lsotype:</b>               | IgG   |
| <b>Purification:</b>          | affinity purified by Protein A  |
| <b>Storage Buffer:</b>        | 0.01M TBS(pH7.4) with 1% BSA, 0.03% Proclin300 and 50% Glycerol.  |
| <b>Storage:</b>               | Store at -20 °C for one year. Avoid repeated freeze/thaw cycles. The lyophilized antibody is stable at room temperature for at least one month and for greater than a year when kept at -20°C. When reconstituted in sterile pH 7.4 0.01M PBS or diluent of antibody the antibody is stable for at least two weeks at 2-4 °C.   |
| <b>PubMed:</b>                | <a href="#">PubMed</a>  |

HLA-A belongs to the HLA class I heavy chain paralogues. This class I molecule is a heterodimer consisting of a heavy chain and a light chain (beta-2 microglobulin). The heavy chain is anchored in the membrane. Class I molecules play a central role in the immune system by presenting peptides derived from the endoplasmic reticulum lumen. They are expressed in nearly all cells. The heavy chain is approximately 45 kDa and its gene contains 8 exons. Exon 1 encodes the leader peptide, exons 2 and 3 encode the alpha1 and alpha2 domains, which both bind the peptide, exon 4 encodes the alpha3 domain, exon 5 encodes the transmembrane region, and exons 6 and 7 encode the cytoplasmic tail. Polymorphisms within exon 2 and exon 3 are responsible for the peptide binding specificity of each class one molecule. Typing for these polymorphisms is routinely done for bone marrow and kidney transplantation. Hundreds of HLA-A alleles have been described. [provided by RefSeq, Jul 2008]

**Function:**

Involved in the presentation of foreign antigens to the immune system.

**Subunit:**

Heterodimer of an alpha chain and a beta chain (beta-2-microglobulin). Interacts with human herpesvirus 8 MIR1 protein. Interacts with HTLV-1 p12I accessory protein.

**Subcellular Location:**

Cell Membrane; Type I membrane protein.

**Post-translational modifications:**

Polyubiquitinated in a post ER compartment by interaction with human herpesvirus 8 MIR1 protein. This targets the protein for rapid degradation via the ubiquitin system.

**Similarity:**

Belongs to the MHC class I family.

Contains 1 Ig-like C1-type (immunoglobulin-like) domain.

**SWISS:**

G0ZMJ8

**Gene ID:**

3107

**Database links:**

[Entrez Gene: 3107Human](#)

[Omim: 142840Human](#)

[SwissProt: P04222Human](#)

**Product Detail:**

[SwissProt: P10321Human](#)

[SwissProt: Q07000Human](#)

[Unigene: 656020Human](#)

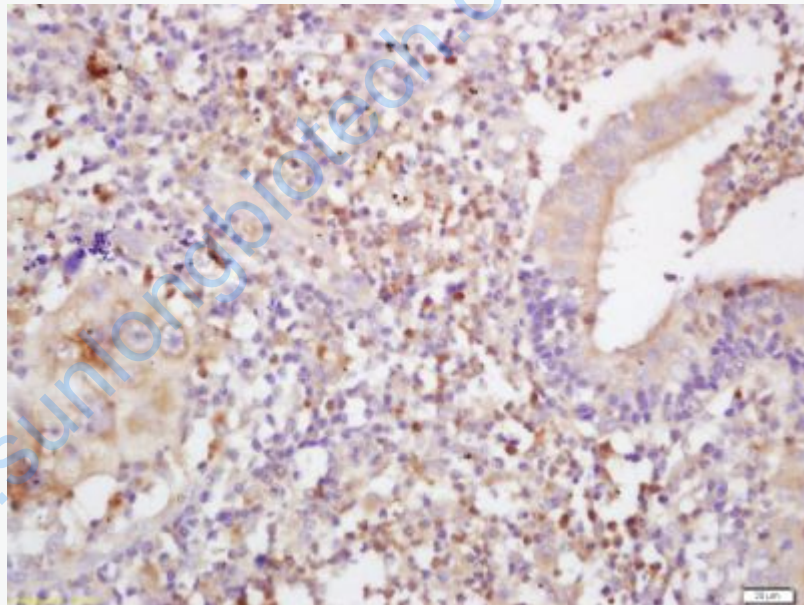
[Unigene: 743218Human](#)

[Unigene: 77961Human](#)

**Important Note:**

This product as supplied is intended for research use only, not for use in human, therapeutic or diagnostic applications.

**Picture:**



Tissue/cell: human lung carcinoma; 4% Paraformaldehyde-fixed and paraffin-embedded;

Antigen retrieval: citrate buffer ( 0.01M, pH 6.0 ), Boiling bathing for 15min; Block endogenous peroxidase by 3% Hydrogen peroxide for 30min; Blocking buffer (normal goat serum,C-0005) at 37°C for 20 min;

Incubation: Anti-HLA-C Polyclonal Antibody, Unconjugated(SL10251R) 1:200,

|  |   |
|--|---|
|  | overnight at 4°C, followed by conjugation to the secondary antibody(SP-0023) and DAB(C-0010) staining |
|--|---|

[www.sunlongbiotech.com](http://www.sunlongbiotech.com)