



Rabbit Anti-IL-17F antibody

SL10267R

Product Name:	IL-17F
Chinese Name:	白介素17F抗体
Alias:	Interleukin 17F;Cytokine ML-1;IL-17F,IL17F_HUMAN;Interleukin-17F;CANDF6;ML1.
Organism Species:	Rabbit
Clonality:	Polyclonal
React Species:	Human,Rat,
Applications:	IHC-P=1:400-800IHC-F=1:400-800 (Paraffin sections need antigen repair) not yet tested in other applications. optimal dilutions/concentrations should be determined by the end user.
Molecular weight:	29kDa
Cellular localization:	cytoplasmicThe cell membrane
Form:	Lyophilized or Liquid
Concentration:	1mg/ml
immunogen:	KLH conjugated synthetic peptide derived from human IL-17F:21-120/163
Lsotype:	IgG
Purification:	affinity purified by Protein A
Storage Buffer:	0.01M TBS(pH7.4) with 1% BSA, 0.03% Proclin300 and 50% Glycerol.
Storage:	Store at -20 °C for one year. Avoid repeated freeze/thaw cycles. The lyophilized antibody is stable at room temperature for at least one month and for greater than a year when kept at -20°C. When reconstituted in sterile pH 7.4 0.01M PBS or diluent of antibody the antibody is stable for at least two weeks at 2-4 °C.
PubMed:	PubMed
Product Detail:	The protein encoded by this gene is a cytokine that shares sequence similarity with IL17. This cytokine is expressed by activated T cells, and has been shown to stimulate the production of several other cytokines, including IL6, IL8, and CSF2/GM-CSF. This cytokine is also found to inhibit the angiogenesis of endothelial cells and induce endothelial cells to produce IL2, TGFB1/TGFB, and monocyte chemoattractant protein-1. [provided by RefSeq, Jul 2008]

Function:

Stimulates the production of other cytokines such as IL-6, IL-8 and granulocyte colony-stimulating factor, and can regulate cartilage matrix turnover. Stimulates PBMC and T-cell proliferation. Inhibits angiogenesis.

Subunit:

Homodimer; disulfide-linked.

Subcellular Location:

Secreted.

Tissue Specificity:

Expressed in activated, but not resting, CD4+ T-cells and activated monocytes.

DISEASE:

Defects in IL17F are the cause of familial candidiasis type 6 (CANDF6) [MIM:613956]. CANDF6 is a rare disorder with altered immune responses and impaired clearance of fungal infections, selective against Candida. It is characterized by persistent and/or recurrent infections of the skin, nails and mucous membranes caused by organisms of the genus Candida, mainly Candida albicans.

Similarity:

Belongs to the IL-17 family.

SWISS:

Q96PD4

Gene ID:

112744

Database links:

[Entrez Gene: 112744](#)Human

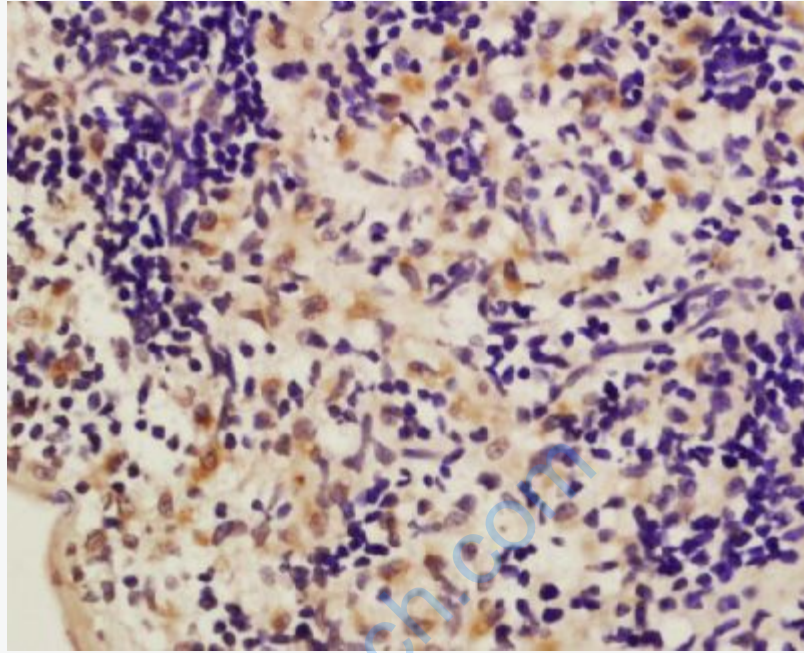
[Omim: 606496](#)Human

[SwissProt: Q96PD4](#)Human

[Unigene: 272295](#)Human

Important Note:

This product as supplied is intended for research use only, not for use in human, therapeutic or diagnostic applications.



Picture:

Tissue/cell: rat spleen tissue; 4% Paraformaldehyde-fixed and paraffin-embedded;
Antigen retrieval: citrate buffer (0.01M, pH 6.0), Boiling bathing for 15min; Block
endogenous peroxidase by 3% Hydrogen peroxide for 30min; Blocking buffer
(normal goat serum,C-0005) at 37°C for 20 min;
Incubation: Anti-IL-17F Polyclonal Antibody, Unconjugated(SL10267R) 1:200,
overnight at 4°C, followed by conjugation to the secondary antibody(SP-0023) and
DAB(C-0010) staining