



Rabbit Anti-C5R1 antibody

SL10288R

Product Name:	C5R1
Chinese Name:	补体成分5受体1抗体
Alias:	ANAPHYLATOXIN RECEPTOR; C5a anaphylatoxin chemotactic receptor; C5a anaphylatoxin receptor; C5A; C5a ligand; C5a-R; C5aR; C5AR_HUMAN; c5ar1; C5R1; CD88; CD88 antigen; Complement component 5 receptor 1; Complement component 5 receptor 1; Complement component 5 receptor 2; Complement component 5a receptor 1.
Organism Species:	Rabbit
Clonality:	Polyclonal
React Species:	Human,Rat,Dog,Pig,Cow,Rabbit,Sheep,Guinea Pig,
Applications:	WB=1:500-2000ELISA=1:500-1000IHC-P=1:400-800IHC-F=1:400-800ICC=1:100-500IF=1:100-500 (Paraffin sections need antigen repair) not yet tested in other applications. optimal dilutions/concentrations should be determined by the end user.
Molecular weight:	39kDa
Cellular localization:	The cell membrane
Form:	Lyophilized or Liquid
Concentration:	1mg/ml
immunogen:	KLH conjugated synthetic peptide derived from human C5R1:51-150/350
Lsotype:	IgG
Purification:	affinity purified by Protein A
Storage Buffer:	0.01M TBS(pH7.4) with 1% BSA, 0.03% Proclin300 and 50% Glycerol.
Storage:	Store at -20 °C for one year. Avoid repeated freeze/thaw cycles. The lyophilized antibody is stable at room temperature for at least one month and for greater than a year when kept at -20°C. When reconstituted in sterile pH 7.4 0.01M PBS or diluent of antibody the antibody is stable for at least two weeks at 2-4 °C.
PubMed:	PubMed
Product Detail:	CD88, also known as C5a receptor (C5aR), is a G protein-coupled integral membrane protein. CD88, which is expressed on neutrophils, monocytes, macrophages, hepatocytes and mast cells, as well as on various epithelial and endothelial cells, serves

as a receptor for the inflammatory peptide C5a. Research studies suggest a role for CD88 in the inflammatory response. The binding of C5a to CD88 has been shown to elicit increased production of acute phase proteins in liver. In brain, an increased production of CD88 has been shown to be associated with inflammation. Research also indicates a role for C5a/C5aR in the pathogenesis of rheumatoid arthritis, as well as a heightened responsiveness of human bronchial epithelial cells (HBECs) to C5a upon exposure of these cells to cigarette smoke and other environmental irritants.

Function:

Receptor for the chemotactic and inflammatory peptide anaphylatoxin C5a. This receptor stimulates chemotaxis, granule enzyme release and superoxide anion production.

Subunit:

Interacts with ARRB1 and ARRB2.

Subcellular Location:

Cell membrane; Multi-pass membrane protein.

Post-translational modifications:

Sulfation plays a critical role in the association of the receptor with C5a, but no significant role in the ability of the receptor to transduce a signal and mobilize calcium in response to a small peptide agonist.

Similarity:

Belongs to the G-protein coupled receptor 1 family.

SWISS:

P21730

Gene ID:

728

Database links:

[Entrez Gene: 728](#)Human

[Omim: 113995](#)Human

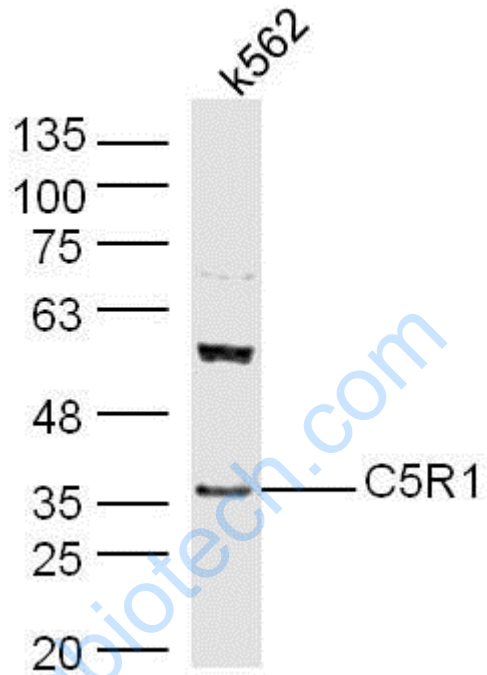
[SwissProt: P21730](#)Human

[Unigene: 2161](#)Human

Important Note:

This product as supplied is intended for research use only, not for use in human, therapeutic or diagnostic applications.

Picture:



Protein: k562(human) lysate at 40ug;

Primary: rabbit Anti-C5R1 (SL10288R) at 1:300;

Secondary: HRP conjugated Goat-Anti-rabbit IgG(SL10288R) at 1: 5000;

Predicted band size: 39 kD

Observed band size: 36 kD