



## Rabbit Anti-SYF2 antibody

SL10290R

<b>Product Name:</b>	SYF2
<b>Chinese Name:</b>	SYF2蛋白抗体
<b>Alias:</b>	Pre-mRNA-splicing factor SYF2; CCNDBP1-interactor; p29; SYF2 HUMAN.
<b>Organism Species:</b>	Rabbit
<b>Clonality:</b>	Polyclonal
<b>React Species:</b>	Human,Mouse,Rat,Dog,Pig,Cow,Horse,Rabbit,Sheep,
<b>Applications:</b>	ELISA=1:500-1000IHC-P=1:400-800IHC-F=1:400-800ICC=1:100-500IF=1:100-500 (Paraffin sections need antigen repair) not yet tested in other applications. optimal dilutions/concentrations should be determined by the end user.
<b>Molecular weight:</b>	29kDa
<b>Cellular localization:</b>	The nucleus
<b>Form:</b>	Lyophilized or Liquid
<b>Concentration:</b>	1mg/ml
<b>immunogen:</b>	KLH conjugated synthetic peptide derived from human SYF2:131-230/243
<b>Lsotype:</b>	IgG
<b>Purification:</b>	affinity purified by Protein A
<b>Storage Buffer:</b>	0.01M TBS(pH7.4) with 1% BSA, 0.03% Proclin300 and 50% Glycerol.
<b>Storage:</b>	Store at -20 °C for one year. Avoid repeated freeze/thaw cycles. The lyophilized antibody is stable at room temperature for at least one month and for greater than a year when kept at -20°C. When reconstituted in sterile pH 7.4 0.01M PBS or diluent of antibody the antibody is stable for at least two weeks at 2-4 °C.
<b>PubMed:</b>	<a href="#">PubMed</a>
<b>Product Detail:</b>	SYF2 is a nuclear protein that interacts with cyclin D-type binding-protein 1, which is thought to be a cell cycle regulator at the G1/S transition. Alternate transcriptional splice variants, encoding different isoforms, have been characterized.  <b>Function:</b> May be involved in pre-mRNA splicing (By similarity).

**Subunit:**

Identified in the spliceosome C complex. Interacts with CCNDBP1.

**Subcellular Location:**

Nucleus.

**Tissue Specificity:**

Abundantly expressed in the heart, skeletal muscle and kidney. Expressed at lower level other tissues.

**Similarity:**

Belongs to the SYF2 family.

**SWISS:**

O95926

**Gene ID:**

25949

**Database links:**

[Entrez Gene: 25949](#)Human

[Entrez Gene: 68592](#)Mouse

[Entrez Gene: 170933](#)Rat

[Omim: 607090](#)Human

[SwissProt: O95926](#)Human

[SwissProt: Q9D198](#)Mouse

[SwissProt: Q4QRB2](#)Rat

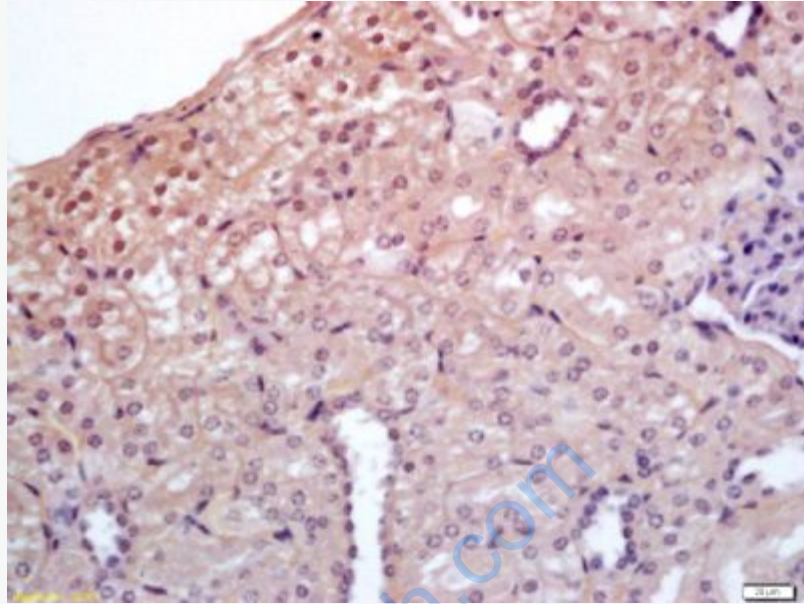
[Unigene: 20013](#)Human

[Unigene: 29989](#)Mouse

[Unigene: 162117](#)Rat

**Important Note:**

This product as supplied is intended for research use only, not for use in human, therapeutic or diagnostic applications.



**Picture:**

Tissue/cell: mouse kidney tissue; 4% Paraformaldehyde-fixed and paraffin-embedded;

Antigen retrieval: citrate buffer ( 0.01M, pH 6.0 ), Boiling bathing for 15min; Block endogenous peroxidase by 3% Hydrogen peroxide for 30min; Blocking buffer (normal goat serum,C-0005) at 37°C for 20 min;

Incubation: Anti-SYF2 Polyclonal Antibody, Unconjugated(SL10290R) 1:200, overnight at 4°C, followed by conjugation to the secondary antibody(SP-0023) and DAB(C-0010) staining