



## Rabbit Anti-Claudin 5 antibody

SL10296R

<b>Product Name:</b>	Claudin 5
<b>Chinese Name:</b>	紧密连接蛋白5抗体
<b>Alias:</b>	AWAL; BEC 1; BEC1; Claudin 5 (transmembrane protein deleted in velocardiofacial syndrome); Claudin5; Claudin-5;CLDN 5; CLDN5; CPETR L1; CPETRL 1; CPETRL1; TMDVCF; TMVCF; Transmembrane protein deleted in VCFS; Transmembrane protein deleted in velocardiofacial syndrome; Androgen withdrawal and apoptosis induced protein RVP1 like; CLD5 HUMAN.
<b>Organism Species:</b>	Rabbit
<b>Clonality:</b>	Polyclonal
<b>React Species:</b>	Human,Mouse,Rat,Pig,Cow,Horse,Rabbit,Sheep,
<b>Applications:</b>	WB=1:500-2000ELISA=1:500-1000Flow-Cyt=3ug/Test not yet tested in other applications. optimal dilutions/concentrations should be determined by the end user.
<b>Molecular weight:</b>	23kDa
<b>Cellular localization:</b>	The cell membraneExtracellular matrix
<b>Form:</b>	Lyophilized or Liquid
<b>Concentration:</b>	1mg/ml
<b>immunogen:</b>	KLH conjugated synthetic peptide derived from human Claudin 5:29-81/218<Extracellular>
<b>Lsotype:</b>	IgG
<b>Purification:</b>	affinity purified by Protein A
<b>Storage Buffer:</b>	0.01M TBS(pH7.4) with 1% BSA, 0.03% Proclin300 and 50% Glycerol.
<b>Storage:</b>	Store at -20 °C for one year. Avoid repeated freeze/thaw cycles. The lyophilized antibody is stable at room temperature for at least one month and for greater than a year when kept at -20°C. When reconstituted in sterile pH 7.4 0.01M PBS or diluent of antibody the antibody is stable for at least two weeks at 2-4 °C.
<b>PubMed:</b>	<a href="#">PubMed</a>
<b>Product Detail:</b>	This gene encodes a member of the claudin family. Claudins are integral membrane proteins and components of tight junction strands. Tight junction strands serve as a physical barrier to prevent solutes and water from passing freely through the paracellular

space between epithelial or endothelial cell sheets. Mutations in this gene have been found in patients with velocardiofacial syndrome. Alternatively spliced transcript variants encoding the same protein have been found for this gene. [provided by RefSeq, Aug 2008]

**Function:**

Plays a major role in tight junction-specific obliteration of the intercellular space.

**Subunit:**

Directly interacts with TJP1/ZO-1, TJP2/ZO-2 and TJP3/ZO-3. Interacts with MPDZ.

**Subcellular Location:**

Cell junction, tight junction. Cell membrane; Multi-pass membrane protein.

**Tissue Specificity:**

Expressed in activated, but not resting, CD4+ T-cells and activated monocytes.

**Similarity:**

Belongs to the claudin family.

**SWISS:**

O00501

**Gene ID:**

7122

**Database links:**

[Entrez Gene: 7122](#) Human

[Entrez Gene: 12741](#) Mouse

[Omim: 602101](#) Human

[SwissProt: Q2HJ22](#) Cow

[SwissProt: O00501](#) Human

[SwissProt: O54942](#) Mouse

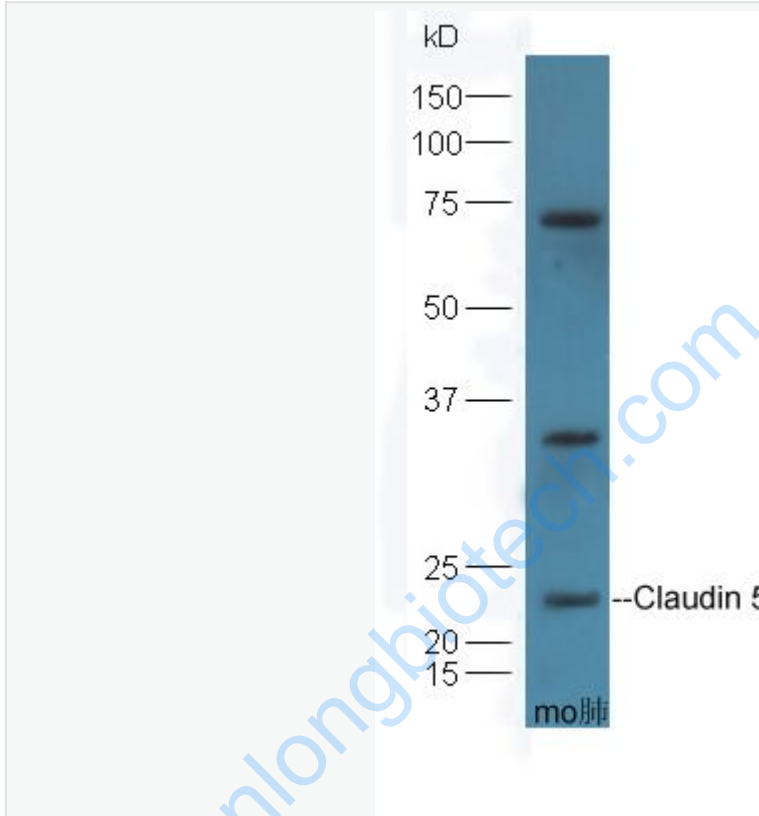
[Unigene: 505337](#) Human

[Unigene: 22768](#) Mouse

**Important Note:**

This product as supplied is intended for research use only, not for use in human, therapeutic or diagnostic applications.

**Picture:**



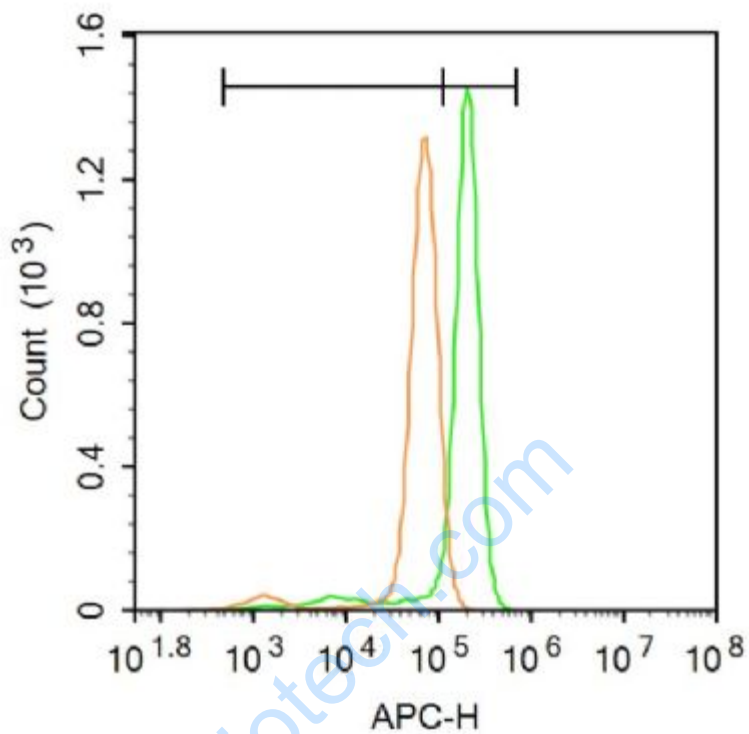
Protein: lung(mouse) lysates at 45ug; Primary: Anti-Claudin 5 (SL10296R) at 1:300;

Secondary: HRP conjugated Goat-Anti-Rabbit IgG(bse-0295G-HRP) at 1: 5000;

ECL excited the fluorescence;

Predicted band size :23 kD

Observed band size :23kD



Blank control (Black line): HUVEC (Black).

Primary Antibody (green line): Rabbit Anti-Claudin 5 antibody (SL10296R)

Dilution:  $1\mu\text{g} / 10^6$  cells;

Isotype Control Antibody (orange line): Rabbit IgG .

Secondary Antibody (white blue line): Goat anti-rabbit IgG-AF647

Dilution:  $1\mu\text{g} / \text{test}$ .

#### Protocol

The cells were fixed with 4% PFA (10min at room temperature) and then permeabilized with 20% PBST for 20 min at room temperature. The cells were then incubated in 5% BSA to block non-specific protein-protein interactions for 30 min at room temperature. Cells stained with Primary Antibody for 30 min at room temperature. The secondary antibody used for 40 min at room temperature.

	Acquisition of 20,000 events was performed.
--	---------------------------------------------

[www.sunlongbiotech.com](http://www.sunlongbiotech.com)