



Rabbit Anti-JAZF1 antibody

SL10308R

Product Name:	JAZF1
Chinese Name:	JAZF1抗体
Alias:	JAZF zinc finger 1; JAZF1; JAZF1_HUMAN; Juxtaposed with another zinc finger protein 1; TAK1 interacting protein 27; TAK1-interacting protein 27; TIP27; Zinc finger protein 802; ZNF802.
Organism Species:	Rabbit
Clonality:	Polyclonal
React Species:	Human,Mouse,Rat,Chicken,Pig,Horse,Rabbit,Sheep,
Applications:	ELISA=1:500-1000IHC-P=1:400-800IHC-F=1:400-800ICC=1:100-500IF=1:100-500 (Paraffin sections need antigen repair) not yet tested in other applications. optimal dilutions/concentrations should be determined by the end user.
Molecular weight:	27kDa
Cellular localization:	The nucleus
Form:	Lyophilized or Liquid
Concentration:	1mg/ml
immunogen:	KLH conjugated synthetic peptide derived from human JAZF1:31-130/243
Lsotype:	IgG
Purification:	affinity purified by Protein A
Storage Buffer:	0.01M TBS(pH7.4) with 1% BSA, 0.03% Proclin300 and 50% Glycerol.
Storage:	Store at -20 °C for one year. Avoid repeated freeze/thaw cycles. The lyophilized antibody is stable at room temperature for at least one month and for greater than a year when kept at -20°C. When reconstituted in sterile pH 7.4 0.01M PBS or diluent of antibody the antibody is stable for at least two weeks at 2-4 °C.
PubMed:	PubMed
Product Detail:	This gene encodes a nuclear protein with three C2H2-type zinc fingers, and functions as a transcriptional repressor. Chromosomal aberrations involving this gene are associated with endometrial stromal tumors. Alternatively spliced variants which encode different protein isoforms have been described; however, not all variants have been fully characterized [provided by RefSeq, Jul 2008]

Function:

Potential transcription factor.

Subunit:

Interacts with TAK1.

DISEASE:

Note=A chromosomal aberration involving JAZF1 may be a cause of endometrial stromal tumors. Translocation t(7;17)(p15;q21) with SUZ12. The translocation generates the JAZF1-SUZ12 oncogene consisting of the N-terminus part of JAZF1 and the C-terminus part of SUZ12. It is frequently found in all cases of endometrial stromal tumors, except in endometrial stromal sarcomas, where it is rarer. Translocation t(6;7)(p21;p22) with PHF1.

Similarity:

Contains 3 C2H2-type zinc fingers.

SWISS:

Q86VZ6

Gene ID:

221895

Database links:

[Entrez Gene: 221895](#)Human

[Entrez Gene: 231986](#)Mouse

[Entrez Gene: 685879](#)Rat

[Omim: 606246](#)Human

[SwissProt: Q86VZ6](#)Human

[SwissProt: Q80ZQ5](#)Mouse

[SwissProt: Q5RDF5](#)Orangutan

[Unigene: 368944](#)Human

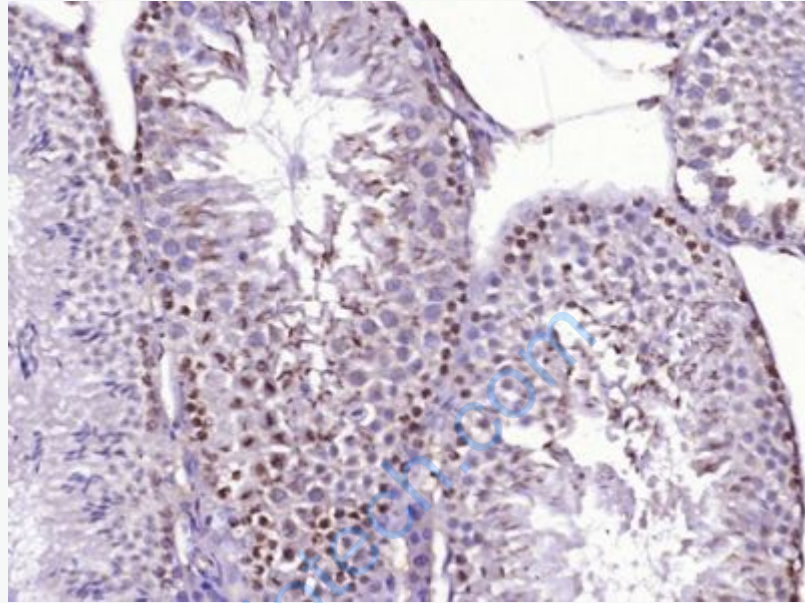
[Unigene: 386865](#)Mouse

Important Note:

This product as supplied is intended for research use only, not for use in human, therapeutic or diagnostic applications.

II型Diabetes是危害很大的疾病, 科学家们最近又鉴定出了6个参与II型Diabetes有关

的基因。其中JAZF1基因同时在II型Diabetes和前列腺癌中都起作用，但Diabetes和前列腺癌的变异处于基因的不同位置。这些研究将会帮助我们揭示复杂的Diabetes基础，提示治疗和预防这个疾病的更好新方法。



Picture:

Paraformaldehyde-fixed, paraffin embedded (Mouse testis); Antigen retrieval by boiling in sodium citrate buffer (pH6.0) for 15min; Block endogenous peroxidase by 3% hydrogen peroxide for 20 minutes; Blocking buffer (normal goat serum) at 37°C for 30min; Antibody incubation with (JAZF1) Polyclonal Antibody, Unconjugated (SL10308R) at 1:400 overnight at 4°C, followed by operating according to SP Kit(Rabbit) (sp-0023) instructions and DAB staining.