



## Rabbit Anti-CD22 antibody

SL10312R

<b>Product Name:</b>	CD22
<b>Chinese Name:</b>	Blymphocyte粘附分子CD22抗体
<b>Alias:</b>	B cell receptor CD22 precursor; B lymphocyte cell adhesion molecule; BL CAM; BL-CAM; BLCAM; CD 22; CD22 antigen; CD22 molecule; CD22 protein; Leu14; Lyb8; MGC130020; Sialic acid binding immunoglobulin like lectin 2; SIGLEC 2; SIGLEC2; SIGLEC-2; FLJ22814; MGC130020; CD22_HUMAN; B-cell receptor CD22; B-lymphocyte cell adhesion molecule; Sialic acid-binding Ig-like lectin 2; Siglec-2; T-cell surface antigen Leu-14; CD22.
<b>Organism Species:</b>	Rabbit
<b>Clonality:</b>	Polyclonal
<b>React Species:</b>	Human,Mouse,Rat,Cow,Horse,Sheep,
<b>Applications:</b>	WB=1:500-2000ELISA=1:500-1000IHC-F=1:400-800Flow-Cyt=1µg/TestICC=1:100-500IF=1:100-500 (Paraffin sections need antigen repair) not yet tested in other applications. optimal dilutions/concentrations should be determined by the end user.
<b>Molecular weight:</b>	91kDa
<b>Cellular localization:</b>	The cell membrane
<b>Form:</b>	Lyophilized or Liquid
<b>Concentration:</b>	1mg/ml
<b>immunogen:</b>	KLH conjugated synthetic peptide derived from human CD22:531-630/847<Extracellular>
<b>Lsotype:</b>	IgG
<b>Purification:</b>	affinity purified by Protein A
<b>Storage Buffer:</b>	0.01M TBS(pH7.4) with 1% BSA, 0.03% Proclin300 and 50% Glycerol.
<b>Storage:</b>	Store at -20 °C for one year. Avoid repeated freeze/thaw cycles. The lyophilized antibody is stable at room temperature for at least one month and for greater than a year when kept at -20°C. When reconstituted in sterile pH 7.4 0.01M PBS or diluent of antibody the antibody is stable for at least two weeks at 2-4 °C.
<b>PubMed:</b>	<a href="#">PubMed</a>
<b>Product Detail:</b>	Mediates B-cell B-cell interactions. May be involved in the localization of B-cells in

lymphoid tissues. Binds sialylated glycoproteins; one of which is CD45. Preferentially binds to alpha-2,6-linked sialic acid. The sialic acid recognition site can be masked by cis interactions with sialic acids on the same cell surface. Upon ligand induced tyrosine phosphorylation in the immune response seems to be involved in regulation of B-cell antigen receptor signaling. Plays a role in positive regulation through interaction with Src family tyrosine kinases and may also act as an inhibitory receptor by recruiting cytoplasmic phosphatases via their SH2 domains that block signal transduction through.

**Function:**

Mediates B-cell B-cell interactions. May be involved in the localization of B-cells in lymphoid tissues. Binds sialylated glycoproteins; one of which is CD45. Preferentially binds to alpha-2,6-linked sialic acid. The sialic acid recognition site can be masked by cis interactions with sialic acids on the same cell surface. Upon ligand induced tyrosine phosphorylation in the immune response seems to be involved in regulation of B-cell antigen receptor signaling. Plays a role in positive regulation through interaction with Src family tyrosine kinases and may also act as an inhibitory receptor by recruiting cytoplasmic phosphatases via their SH2 domains that block signal transduction through dephosphorylation of signaling molecules.

**Subunit:**

Predominantly monomer of isoform CD22-beta. Also found as heterodimer of isoform CD22-beta and a shorter isoform. Interacts with PTPN6/SHP-1, LYN, SYK, PIK3R1/PIK3R2 and PLCG1 upon phosphorylation. Interacts with GRB2, INPP5D and SHC1 upon phosphorylation. May form a complex with INPP5D/SHIP, GRB2 and SHC1.

**Subcellular Location:**

Cell membrane; Single-pass type I membrane protein.

**Tissue Specificity:**

B-lymphocytes.

**Post-translational modifications:**

Phosphorylation of Tyr-762, Tyr-807 and Tyr-822 are involved in binding to SYK, GRB2 and SYK, respectively. Phosphorylation of Tyr-842 is involved in binding to SYK, PLCG2 and PIK3R1/PIK3R2.

**Similarity:**

Belongs to the immunoglobulin superfamily. SIGLEC (sialic acid binding Ig-like lectin) family.

Contains 6 Ig-like C2-type (immunoglobulin-like) domains.

Contains 1 Ig-like V-type (immunoglobulin-like) domain.

**SWISS:**

P20273

**Gene ID:**  
933

**Database links:**

[Entrez Gene: 933](#)Human

[Entrez Gene: 12483](#)Mouse

[Entrez Gene: 308501](#)Rat

[Oimim: 107266](#)Human

[SwissProt: P20273](#)Human

[SwissProt: P35329](#)Mouse

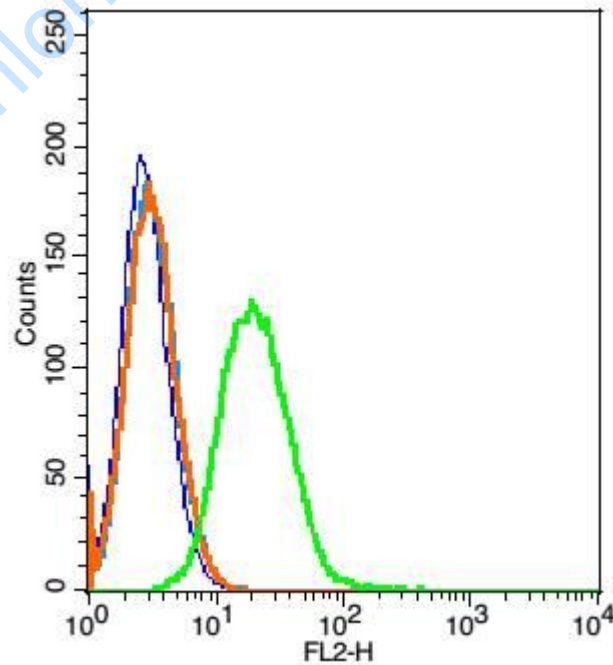
[Unigene: 579691](#)Human

[Unigene: 260994](#)Mouse

**Important Note:**

This product as supplied is intended for research use only, not for use in human, therapeutic or diagnostic applications.

**Picture:**



Blank control: Raji cells(blue).

Primary Antibody: Rabbit Anti- CD22 antibody(SL10312R), Dilution: 1 $\mu$ g in 100  
1 $\mu$ L 1X PBS containing 0.5% BSA;

Isotype Control Antibody: Rabbit IgG(orange) ,used under the same conditions );

Secondary Antibody: Goat anti-rabbit IgG-PE(white blue), Dilution: 1:200 in 1 X  
PBS containing 0.5% BSA.

[www.sunlongbiotech.com](http://www.sunlongbiotech.com)