



Rabbit Anti-SLC22A12 antibody

SL10357R

Product Name:	SLC22A12
Chinese Name:	尿酸盐重吸收转运子1抗体
Alias:	URAT1; S22AC_HUMAN; OAT4L; Solute carrier family 22 member 12; Organic anion transporter 4-like protein; Renal-specific transporter; RST; Urate anion exchanger 1; Urate 1 transporter protein; solute carrier family 22 (organic anion/cation transporter), member12; slc22a12.
Organism Species:	Rabbit
Clonality:	Polyclonal
React Species:	Human,
Applications:	WB=1:500-2000ELISA=1:500-1000IHC-P=1:400-800IHC-F=1:400-800ICC=1:100-500IF=1:100-500 (Paraffin sections need antigen repair) not yet tested in other applications. optimal dilutions/concentrations should be determined by the end user.
Molecular weight:	61kDa
Cellular localization:	The cell membrane
Form:	Lyophilized or Liquid
Concentration:	1mg/ml
immunogen:	KLH conjugated synthetic peptide derived from human URAT1:101-200/553
Lsotype:	IgG
Purification:	affinity purified by Protein A
Storage Buffer:	0.01M TBS(pH7.4) with 1% BSA, 0.03% Proclin300 and 50% Glycerol.
Storage:	Store at -20 °C for one year. Avoid repeated freeze/thaw cycles. The lyophilized antibody is stable at room temperature for at least one month and for greater than a year when kept at -20°C. When reconstituted in sterile pH 7.4 0.01M PBS or diluent of antibody the antibody is stable for at least two weeks at 2-4 °C.
PubMed:	PubMed
Product Detail:	URAT1 Recent advances in molecular biology have identified three organic anion transporter families: the organic anion transporter (OAT) family encoded by SLC22A, the organic anion transporting peptide (OATP) family encoded by SLC21A (SLCO), and the multidrug resistance-associated protein (MRP) family encoded by ABCB. These

families play critical roles in the transepithelial transport of organic anions in the kidneys as well as in other tissues such as the liver and brain. Among these families, the OAT family plays the central role in renal organic anion transport. Knowledge of these three families at the molecular level, such as substrate selectivity, tissue distribution, and gene localization, is rapidly increasing.

Function:

Required for efficient urate re-absorption in the kidney. Regulates blood urate levels. Mediates saturable urate uptake by facilitating the exchange of urate against organic anions.

Subunit:

Interacts with PDZK1.

Subcellular Location:

Cell membrane; Multi-pass membrane protein. Note=Detected in the luminal membrane of the epithelium of renal proximal tubules.

Tissue Specificity:

Detected in kidney (at protein level). Detected in fetal and adult kidney. Detected in epithelial cells of proximal tubules in renal cortex.

DISEASE:

Hypouricemia renal 1 (RHUC1) [MIM:220150]: A disorder characterized by impaired uric acid reabsorption at the apical membrane of proximal renal tubule cells, and high urinary urate excretion. Patients often appear asymptomatic, but may be subject to exercise-induced acute renal failure, chronic renal dysfunction and nephrolithiasis. Note=The disease is caused by mutations affecting the gene represented in this entry.

Similarity:

Belongs to the major facilitator (TC 2.A.1) superfamily. Organic cation transporter (TC 2.A.1.19) family.

SWISS:

Q9NSA0

Gene ID:

55867

Database links:

[Entrez Gene: 55867](#) Human

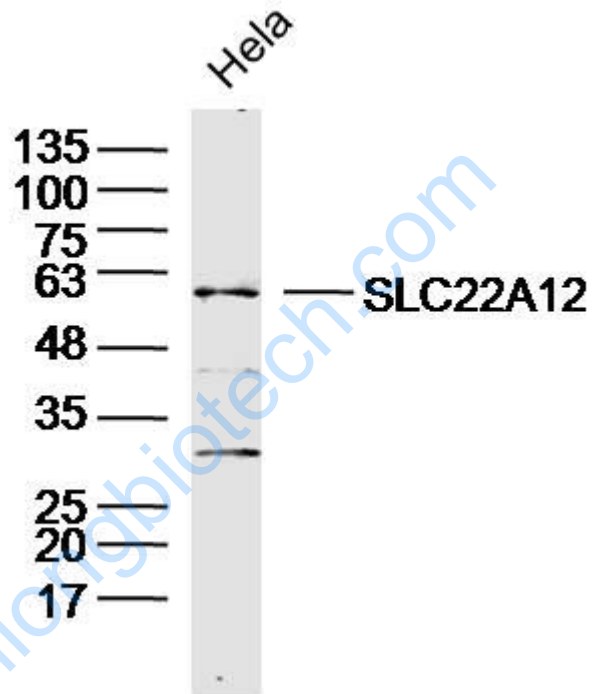
[Omim: 607097](#) Human

[SwissProt: Q9NSA0](#) Human

Important Note:

This product as supplied is intended for research use only, not for use in human, therapeutic or diagnostic applications.

Picture:



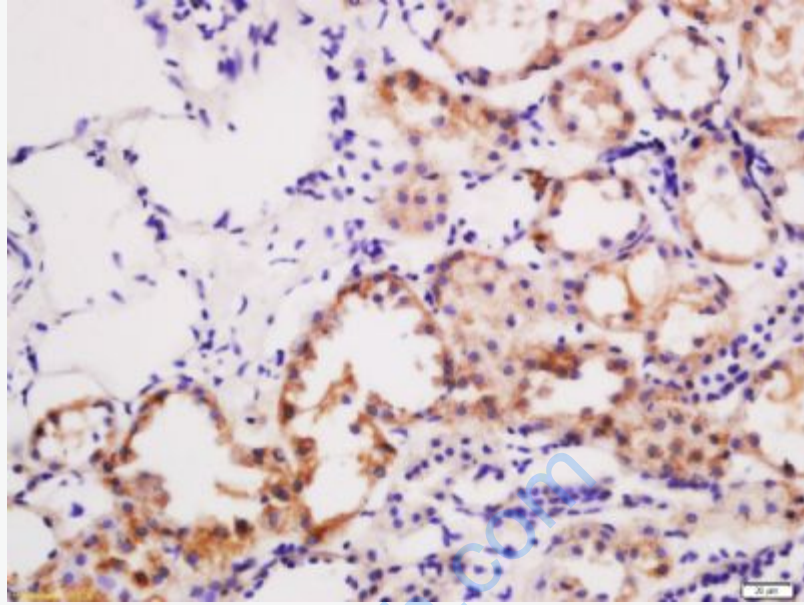
Sample: HeLa Cell (Human) Lysate at 40 ug

Primary: Anti-SLC22A12 (SL10357R) at 1/300 dilution

Secondary: IRDye800CW Goat Anti-Rabbit IgG at 1/20000 dilution

Predicted band size: 61 kD

Observed band size: 61 kD



Tissue/cell: human kidney tissue; 4% Paraformaldehyde-fixed and paraffin-embedded;

Antigen retrieval: citrate buffer (0.01M, pH 6.0), Boiling bathing for 15min; Block endogenous peroxidase by 3% Hydrogen peroxide for 30min; Blocking buffer (normal goat serum,C-0005) at 37°C for 20 min;

Incubation: Anti-SLC22A12 Polyclonal Antibody, Unconjugated(SL10357R) 1:200, overnight at 4°C, followed by conjugation to the secondary antibody(SP-0023) and DAB(C-0010) staining