



Rabbit Anti-SLFNL1 antibody

SL10360R

Product Name:	SLFNL1
Chinese Name:	SLFNL1抗体
Alias:	FLJ23878; MGC43873; OTTHUMP00000006326; OTTHUMP00000006327; OTTHUMP00000006328; Schlafen like 1; Schlafen like protein 1; Schlafen-like protein 1; SLFNL 1; Slfnl1; SLNL1 HUMAN.
Organism Species:	Rabbit
Clonality:	Polyclonal
React Species:	Human,Mouse,Rat,Horse,Rabbit,
Applications:	ELISA=1:500-1000IHC-P=1:400-800IHC-F=1:400-800IF=1:100-500 (Paraffin sections need antigen repair) not yet tested in other applications. optimal dilutions/concentrations should be determined by the end user.
Molecular weight:	45kDa
Cellular localization:	The cell membrane
Form:	Lyophilized or Liquid
Concentration:	1mg/ml
immunogen:	KLH conjugated synthetic peptide derived from human SLFNL1:231-330/407
Lsotype:	IgG
Purification:	affinity purified by Protein A
Storage Buffer:	0.01M TBS(pH7.4) with 1% BSA, 0.03% Proclin300 and 50% Glycerol.
Storage:	Store at -20 °C for one year. Avoid repeated freeze/thaw cycles. The lyophilized antibody is stable at room temperature for at least one month and for greater than a year when kept at -20°C. When reconstituted in sterile pH 7.4 0.01M PBS or diluent of antibody the antibody is stable for at least two weeks at 2-4 °C.
PubMed:	PubMed
Product Detail:	SPTLC1 (serine palmitoyltransferase 1), also known as LCB1, and SPTLC2 (serine palmitoyltransferase 2), also known as LCB2, together catalyze sphingolipid biosynthesis by converting L-serine and palmitoyl-CoA to 3-oxosphinganine, utilizing pyridoxal 5'-phosphate as a cofactor. Increases in transepidermal water loss triggers upregulation of serine palmitoyltransferase mRNA expression in humans. Deficiencies

in wild type SPTLC1 and SPTLC2 can lead to hereditary sensory neuropathy, atopic eczema, and psoriasis

Similarity:

Belongs to the Schlafen family.

SWISS:

Q499Z3

Gene ID:

200172

Database links:

[Entrez Gene: 200172](#) Human

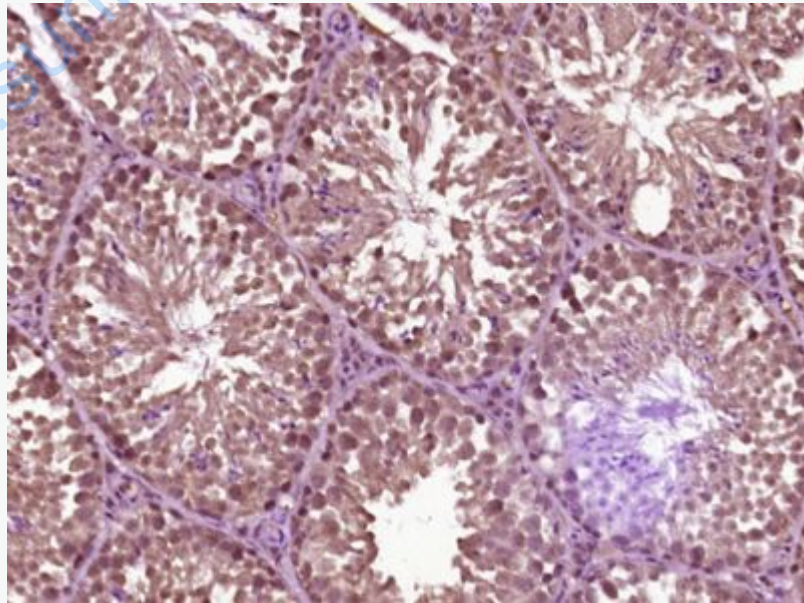
[SwissProt: Q499Z3](#) Human

[Unigene: 194609](#) Human

Important Note:

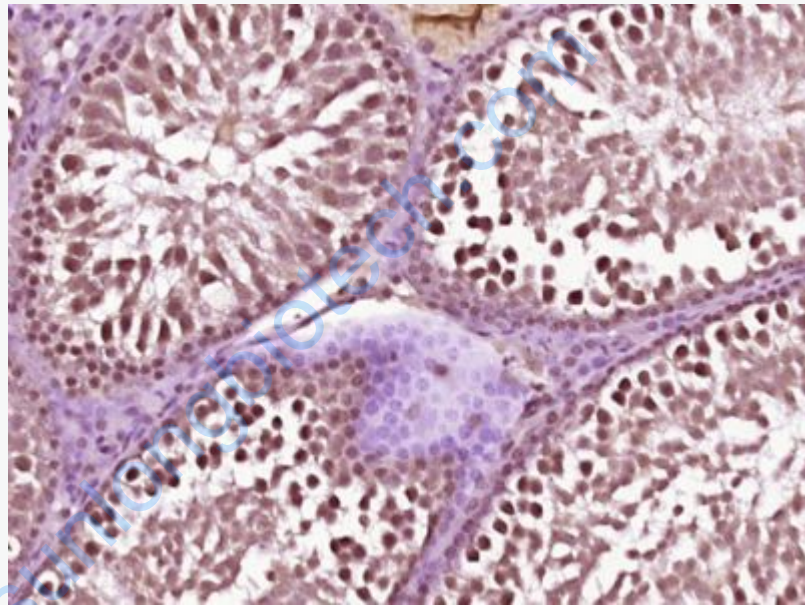
This product as supplied is intended for research use only, not for use in human, therapeutic or diagnostic applications.

Picture:



Paraformaldehyde-fixed, paraffin embedded (Mouse testis); Antigen retrieval by

boiling in sodium citrate buffer (pH6.0) for 15min; Block endogenous peroxidase by 3% hydrogen peroxide for 20 minutes; Blocking buffer (normal goat serum) at 37°C for 30min; Antibody incubation with (SLFNL1) Polyclonal Antibody, Unconjugated (SL10360R) at 1:400 overnight at 4°C, followed by operating according to SP Kit(Rabbit) (sp-0023) instructions and DAB staining.



Paraformaldehyde-fixed, paraffin embedded (Rat testis); Antigen retrieval by boiling in sodium citrate buffer (pH6.0) for 15min; Block endogenous peroxidase by 3% hydrogen peroxide for 20 minutes; Blocking buffer (normal goat serum) at 37°C for 30min; Antibody incubation with (SLFNL1) Polyclonal Antibody, Unconjugated (SL10360R) at 1:400 overnight at 4°C, followed by operating according to SP Kit(Rabbit) (sp-0023) instructions and DAB staining.