



Rabbit Anti-CD62L antibody

SL1036R

Product Name:	CD62L
Chinese Name:	L选择素抗体
Alias:	L-Selectin; A.11; AI528707; CD62 antigen ligand; CD62 antigen-like family member L; gp90 MEL; hLHRc; IgA nephropathy, susceptibility to, included; L Selectin; LAM1; LECAM1; LEU8; Leukocyte adhesion molecule 1; Leukocyte surface antigen Leu8; Leukocyte-endothelial cell adhesion molecule 1; LNHR; LSEL; Ly-22; Ly-m22; Lyam-1; LYAM1; Lymph node homing receptor; Lymphocyte adhesion molecule 1; Lymphocyte antigen 22; Lymphocyte surface MEL-14 antigen; PLNHR; Selectin L; Selectin, lymphocyte; SELL; TQ1; LYAM1_MOUSE.
Organism Species:	Rabbit
Clonality:	Polyclonal
React Species:	Mouse,Rat,Cow,Rabbit,
Applications:	WB=1:500-2000ELISA=1:500-1000IHC-P=1:400-800IHC-F=1:400-800Flow-Cyt=1µg/TestIF=1:100-500 (Paraffin sections need antigen repair) not yet tested in other applications. optimal dilutions/concentrations should be determined by the end user.
Molecular weight:	37kDa
Cellular localization:	The cell membrane
Form:	Lyophilized or Liquid
Concentration:	1mg/ml
immunogen:	KLH conjugated synthetic peptide derived from mouse CD62L:301-372/372<Cytoplasmic>
Lsotype:	IgG
Purification:	affinity purified by Protein A
Storage Buffer:	0.01M TBS(pH7.4) with 1% BSA, 0.03% Proclin300 and 50% Glycerol.
Storage:	Store at -20 °C for one year. Avoid repeated freeze/thaw cycles. The lyophilized antibody is stable at room temperature for at least one month and for greater than a year when kept at -20°C. When reconstituted in sterile pH 7.4 0.01M PBS or diluent of antibody the antibody is stable for at least two weeks at 2-4 °C.
PubMed:	PubMed

This gene encodes a cell surface adhesion molecule that belongs to a family of adhesion/homing receptors. The encoded protein contains a C-type lectin-like domain, a calcium-binding epidermal growth factor-like domain, and two short complement-like repeats. The gene product is required for binding and subsequent rolling of leucocytes on endothelial cells, facilitating their migration into secondary lymphoid organs and inflammation sites. Single-nucleotide polymorphisms in this gene have been associated with various diseases including immunoglobulin A nephropathy. Alternatively spliced transcript variants have been found for this gene. [provided by RefSeq, Oct 2009].

Function:

Cell surface adhesion protein. Mediates the adherence of lymphocytes to endothelial cells of high endothelial venules in peripheral lymph nodes. Promotes initial tethering and rolling of leukocytes in endothelia.

Subunit:

Interaction with PSGL1/SELPLG and PODXL2 is required for promoting recruitment and rolling of leukocytes. This interaction is dependent on the sialyl Lewis X glycan modification of PSGL1 and PODXL2, and tyrosine sulfation modifications of PSGL1. Sulfation on 'Tyr-51' of PSGL1 is important for L-selectin binding.

Subcellular Location:

Membrane; Single-pass type I membrane protein.

Tissue Specificity:

Expressed in B-cell lines and T-lymphocytes.

Similarity:

Belongs to the selectin/LECAM family.
Contains 1 C-type lectin domain.
Contains 1 EGF-like domain.
Contains 2 Sushi (CCP/SCR) domains.

SWISS:

P18337

Gene ID:

20343

Database links:

[Entrez Gene: 20343](#) Mouse

[SwissProt: P18337](#) Mouse

[Unigene: 1461](#) Mouse

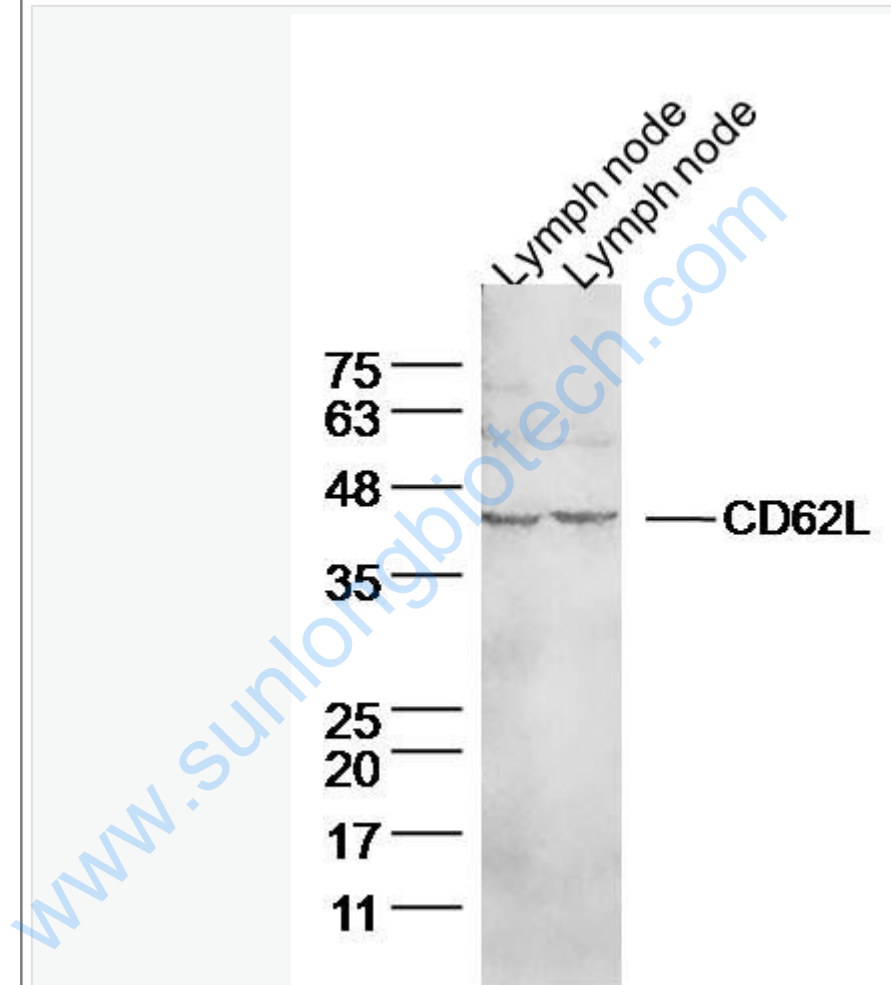
Product Detail:

Important Note:

This product as supplied is intended for research use only, not for use in human, therapeutic or diagnostic applications.

属于endothelial cells白Cell adhesion molecule, 主要在lymphocyte表达,lymphocyte型选择素。<

Picture:



Sample:

Lymph node (Mouse) Lysate at 40 ug

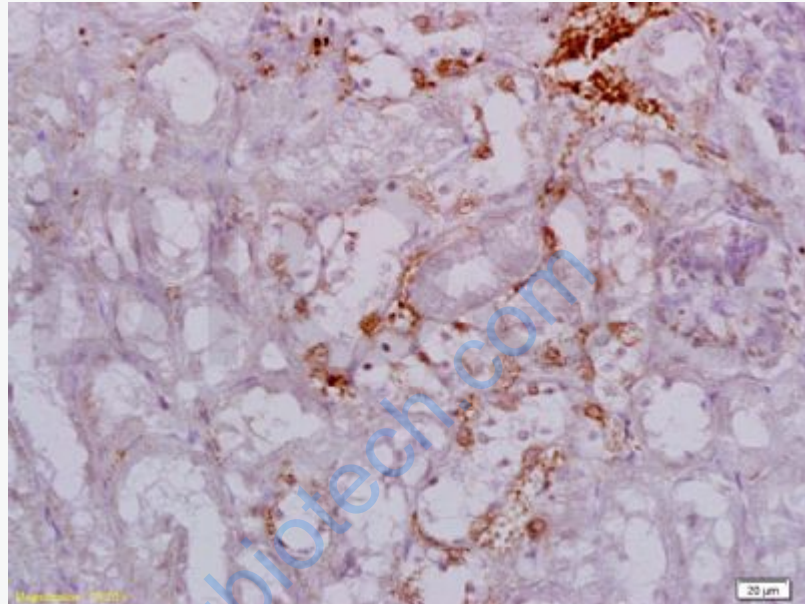
Lymph node (Rat) Lysate at 40 ug

Primary: Anti- CD62L (SL1036R) at 1/300 dilution

Secondary: IRDye800CW Goat Anti-Rabbit IgG at 1/20000 dilution

Predicted band size: 37 kD

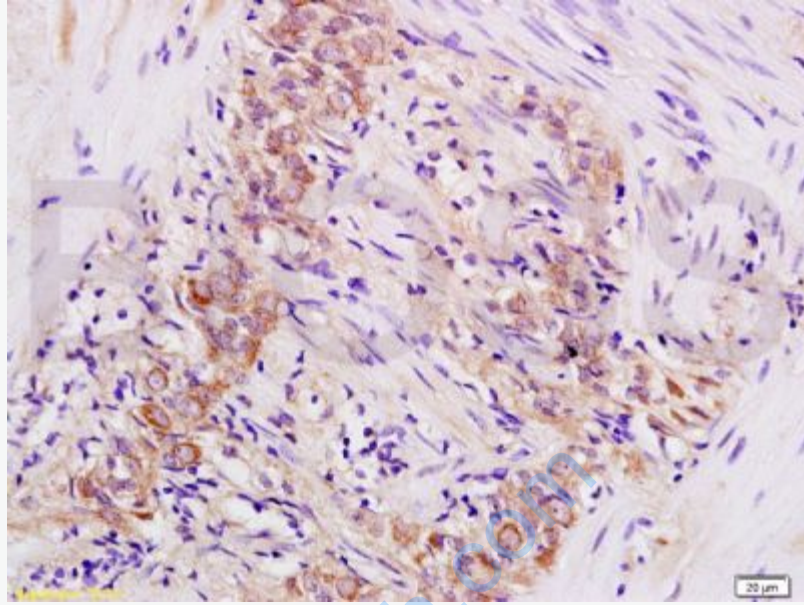
Observed band size: 43 kD



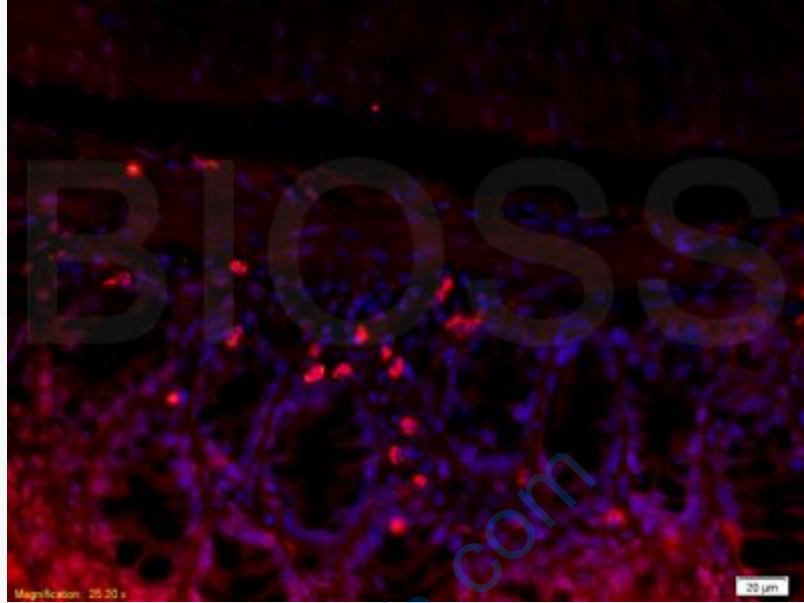
Tissue/cell: mouse kidney tissue; 4% Paraformaldehyde-fixed and paraffin-embedded;

Antigen retrieval: citrate buffer (0.01M, pH 6.0), Boiling bathing for 15min; Block endogenous peroxidase by 3% Hydrogen peroxide for 30min; Blocking buffer (normal goat serum,C-0005) at 37°C for 20 min;

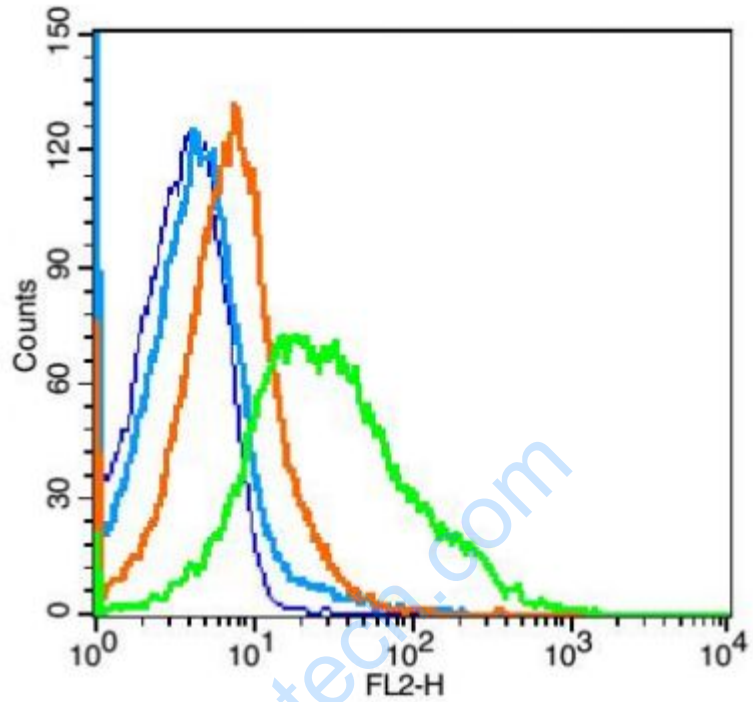
Incubation: Anti-L-Selectin Polyclonal Antibody, Unconjugated(SL1036R) 1:200, overnight at 4°C, followed by conjugation to the secondary antibody(SP-0023) and DAB(C-0010) staining



Tissue/cell: rat colon tissue; 4% Paraformaldehyde-fixed and paraffin-embedded;
Antigen retrieval: citrate buffer (0.01M, pH 6.0), Boiling bathing for 15min; Block endogenous peroxidase by 3% Hydrogen peroxide for 30min; Blocking buffer (normal goat serum,C-0005) at 37°C for 20 min;
Incubation: Anti-L-Selectin Polyclonal Antibody, Unconjugated(SL1036R) 1:200, overnight at 4°C, followed by conjugation to the secondary antibody(SP-0023) and DAB(C-0010) staining



Tissue/cell: rat colitis tissue;4% Paraformaldehyde-fixed and paraffin-embedded;
Antigen retrieval: citrate buffer (0.01M, pH 6.0), Boiling bathing for 15min;
Blocking buffer (normal goat serum,C-0005) at 37°C for 20 min;
Incubation: Anti-L-Selectin Polyclonal Antibody, Unconjugated(SL1036R) 1:200,
overnight at 4°C; The secondary antibody was Goat Anti-Rabbit IgG, Cy3
conjugated(SL1036R)used at 1:200 dilution for 40 minutes at 37°C.
DAPI(5ug/ml,blue,C-0033) was used to stain the cell nuclei



Blank control: mouse spleen cells (blue).

Primary Antibody: Rabbit Anti- CD62L antibody(SL1036R), Dilution: 1 μ g in 100 μ L 1X PBS containing 0.5% BSA;

Isotype Control Antibody: Rabbit IgG(orange) ,used under the same conditions);

Secondary Antibody: Goat anti-rabbit IgG-PE(white blue), Dilution: 1:200 in 1 X PBS containing 0.5% BSA.

Protocol

The cells were fixed with 2% paraformaldehyde (10 min). Primary antibody (SL1036R) were incubated for 30 min on the ice, followed by 1 X PBS containing 0.5% BSA + 1 0% goat serum (15 min) to block non-specific protein-protein interactions. Then the Goat Anti-rabbit IgG/PE antibody was added into the blocking buffer mentioned above to react with the primary antibody at 1/200 dilution for 30

	min on ice. Acquisition of 20,000 events was performed.
--	---

www.sunlongbiotech.com