



Rabbit Anti-Galectin-3 antibody

SL10377R

Product Name:	Galectin-3
Chinese Name:	半乳糖凝集素3抗体
Alias:	Galectin-3; 35 kDa lectin; Carbohydrate binding protein 35; CBP 35; CBP35; GAL 3; GAL3; Galactose specific lectin 3; Galactose-specific lectin 3; Galactoside binding protein; Galactoside-binding protein; GALBP; Galectin3 internal gene,included; Galectin-3; Galectin3; GALIG; GBP; IgE binding protein; IgE-binding protein; L 31; L 34; L-34 galactoside-binding lectin; L31; Laminin binding protein; Laminin-binding protein; Lectin galactose binding soluble 3; Lectin galactoside binding soluble 3; Lectin L 29; Lectin L-29; Lectin, galactose binding, soluble 3; LGALS 3; LGALS2; LGALS3; LGALS3 protein; MAC 2 antigen; Mac-2; MAC2; Macrophage galactose-specific lectin; MGC105387; Galectin- 3; LEG3_MOUSE.
Organism Species:	Rabbit
Clonality:	Polyclonal
React Species:	Mouse,Rat,
Applications:	WB=1:500-2000ELISA=1:500-1000IHC-P=1:400-800IHC-F=1:400-800ICC=1:100-500IF=1:100-500 (Paraffin sections need antigen repair) not yet tested in other applications. optimal dilutions/concentrations should be determined by the end user.
Molecular weight:	29kDa
Cellular localization:	The nucleuscytoplasmicSecretory protein
Form:	Lyophilized or Liquid
Concentration:	1mg/ml
immunogen:	KLH conjugated synthetic peptide derived from mouse Galectin-3:181-262/262
Lsotype:	IgG
Purification:	affinity purified by Protein A
Storage Buffer:	0.01M TBS(pH7.4) with 1% BSA, 0.03% Proclin300 and 50% Glycerol.
Storage:	Store at -20 °C for one year. Avoid repeated freeze/thaw cycles. The lyophilized antibody is stable at room temperature for at least one month and for greater than a year when kept at -20°C. When reconstituted in sterile pH 7.4 0.01M PBS or diluent of antibody the antibody is stable for at least two weeks at 2-4 °C.

PubMed:[PubMed](#)

This gene encodes a member of the galectin family of carbohydrate binding proteins. Members of this protein family have an affinity for beta-galactosides. The encoded protein is characterized by an N-terminal proline-rich tandem repeat domain and a single C-terminal carbohydrate recognition domain. This protein can self-associate through the N-terminal domain allowing it to bind to multivalent saccharide ligands. This protein localizes to the extracellular matrix, the cytoplasm and the nucleus. This protein plays a role in numerous cellular functions including apoptosis, innate immunity, cell adhesion and T-cell regulation. Alternate splicing results in multiple transcript variants.[provided by RefSeq, Apr 2010].

Function:

Galactose-specific lectin which binds IgE. May mediate with the alpha-3, beta-1 integrin the stimulation by CSPG4 of endothelial cells migration. Together with DMBT1, required for terminal differentiation of columnar epithelial cells during early embryogenesis. In the nucleus: acts as a pre-mRNA splicing factor. Involved in acute inflammatory responses including neutrophil activation and adhesion, chemoattraction of monocytes macrophages, opsonization of apoptotic neutrophils, and activation of mast cells.

Subunit:

Probably forms homo- or heterodimers. Interacts with DMBT1. Forms a complex with the ITGA3, ITGB1 and CSPG4. Interacts with LGALS3BP, LYPD3, CYHR1 and UACA.

Subcellular Location:

Cytoplasm. Nucleus. Secreted. Note=Secreted by a non-classical secretory pathway and associates with the cell surface.

Tissue Specificity:

A major expression is found in the colonic epithelium. It is also abundant in the activated macrophages.

Similarity:

Contains 1 galectin domain.

SWISS:

P16110

Gene ID:

16854

Database links:

[Entrez Gene: 3958](#)Human

[Entrez Gene: 16854](#)Mouse

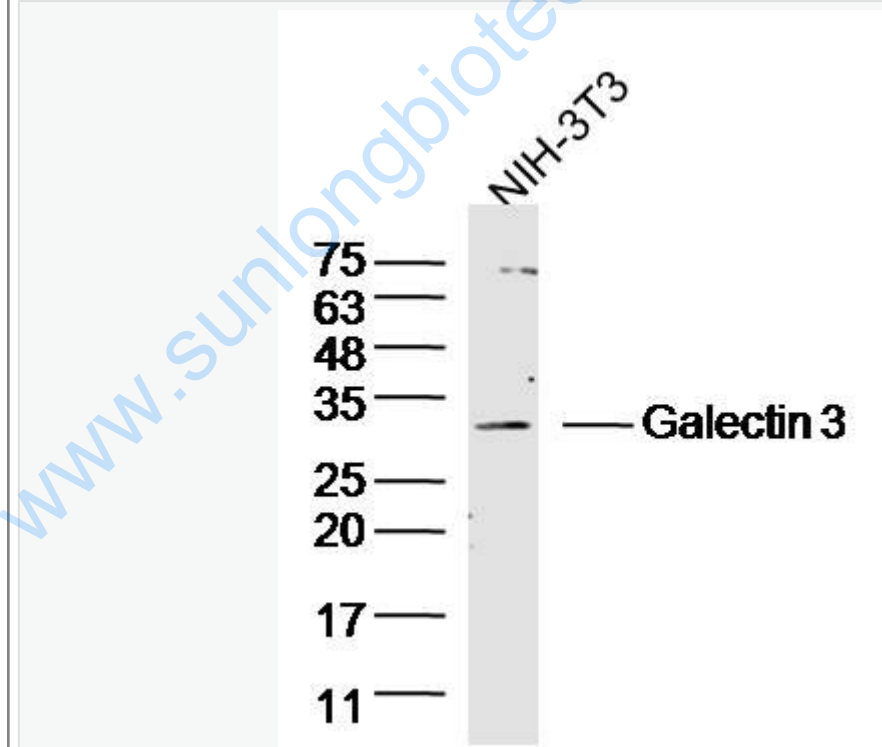
Product Detail:

[Entrez Gene: 83781](#)Rat
[Omim: 153619](#)Human
[SwissProt: P17931](#)Human
[SwissProt: P16110](#)Mouse
[SwissProt: P08699](#)Rat
[Unigene: 531081](#)Human
[Unigene: 248615](#)Mouse
[Unigene: 764](#)Rat

Important Note:

This product as supplied is intended for research use only, not for use in human, therapeutic or diagnostic applications.

Picture:



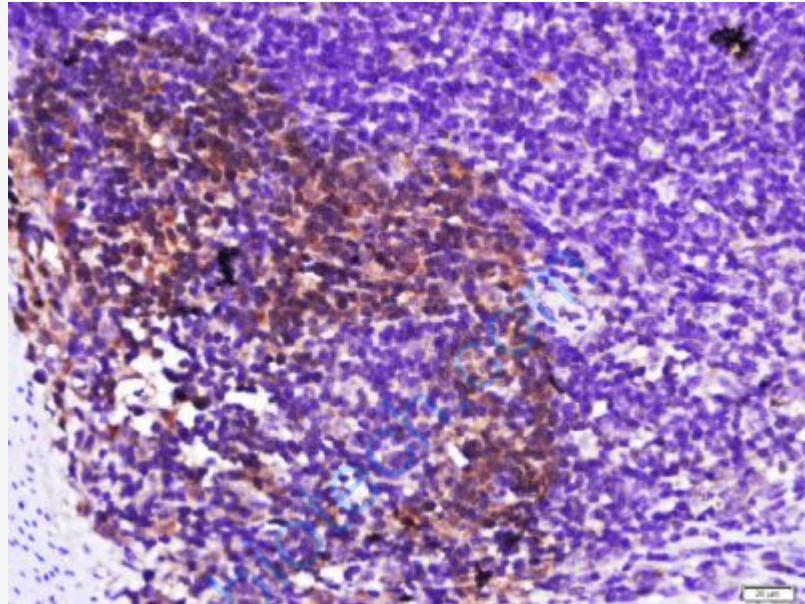
Sample: NIH/3T3 Cell (Mouse) Lysate at 40 ug

Primary: Anti-Galectin-3 (SL10377R) at 1/300 dilution

Secondary: IRDye800CW Goat Anti-Rabbit IgG at 1/20000 dilution

Predicted band size: 29 kD

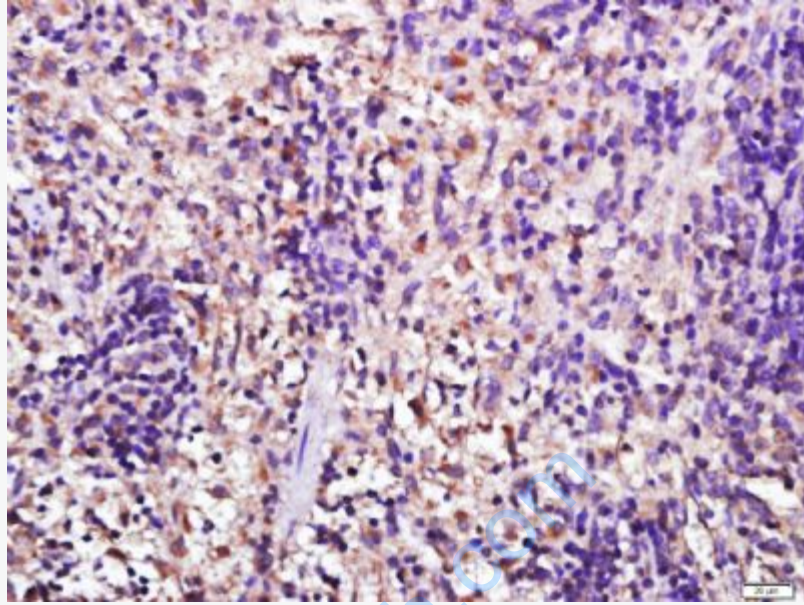
Observed band size: 29 kD



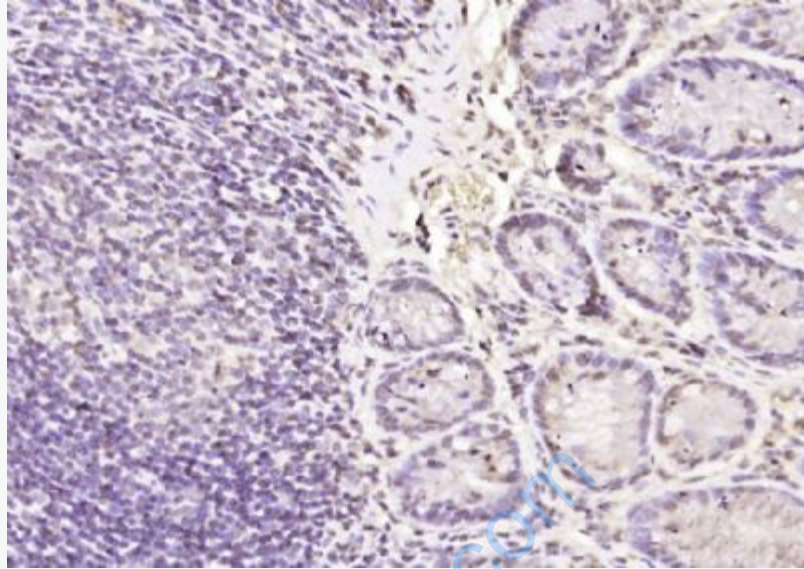
Tissue/cell: Rat lymph node from small intestine; 4% Paraformaldehyde-fixed and paraffin-embedded;

Antigen retrieval: citrate buffer (0.01M, pH 6.0), Boiling bathing for 15min; Block endogenous peroxidase by 3% Hydrogen peroxide for 30min; Blocking buffer (normal goat serum,C-0005) at 37°C for 20 min;

Incubation: Anti-Galectin-3 Polyclonal Antibody, Unconjugated(SL10377R) 1:500, overnight at 4°C, followed by conjugation to the secondary antibody(SP-0023) and DAB(C-0010) staining



Tissue/cell: Rat spleen tissue; 4% Paraformaldehyde-fixed and paraffin-embedded;
Antigen retrieval: citrate buffer (0.01M, pH 6.0), Boiling bathing for 15min; Block endogenous peroxidase by 3% Hydrogen peroxide for 30min; Blocking buffer (normal goat serum,C-0005) at 37°C for 20 min;
Incubation: Anti-Galectin-3 Polyclonal Antibody, Unconjugated(SL10377R) 1:500, overnight at 4°C, followed by conjugation to the secondary antibody(SP-0023) and DAB(C-0010) staining



Paraformaldehyde-fixed, paraffin embedded (Mouse colon); Antigen retrieval by boiling in sodium citrate buffer (pH6.0) for 15min; Block endogenous peroxidase by 3% hydrogen peroxide for 20 minutes; Blocking buffer (normal goat serum) at 37°C for 30min; Antibody incubation with (Galectin-3) Polyclonal Antibody, Unconjugated (SL10377R) at 1:200 overnight at 4°C, followed by operating according to SP Kit(Rabbit) (sp-0023) instructions and DAB staining.