



Rabbit Anti-Syntrophin-2 antibody

SL10384R

Product Name:	Syntrophin-2
Chinese Name:	互养蛋白2抗体
Alias:	Beta 1 syntrophin; Beta 1-syntrophin; SNTB1_HUMAN; Beta-1-syntrophin; Syntrophin beta 2; Syntrophin-beta-2; Syntrophin beta-2; 59 kDa dystrophin-associated protein A1 basic component 1; DAPA1B; BSYN2; Syntrophin 2; Tax interaction protein 43; TIP-43; SNTB1; SNT2B1; 59-DAP; A1B; BSYN2; DAPA1B; SNT2; SNT2B1.
Organism Species:	Rabbit
Clonality:	Polyclonal
React Species:	Human,Mouse,Rat,Dog,Horse,Rabbit,
Applications:	WB=1:500-2000ELISA=1:500-1000IHC-P=1:400-800IHC-F=1:400-800ICC=1:100-500IF=1:100-500 (Paraffin sections need antigen repair) not yet tested in other applications. optimal dilutions/concentrations should be determined by the end user.
Molecular weight:	59kDa
Cellular localization:	The cell membrane
Form:	Lyophilized or Liquid
Concentration:	1mg/ml
immunogen:	KLH conjugated synthetic peptide derived from human Syntrophin-2:51-150/538
Lsotype:	IgG
Purification:	affinity purified by Protein A
Storage Buffer:	0.01M TBS(pH7.4) with 1% BSA, 0.03% Proclin300 and 50% Glycerol.
Storage:	Store at -20 °C for one year. Avoid repeated freeze/thaw cycles. The lyophilized antibody is stable at room temperature for at least one month and for greater than a year when kept at -20°C. When reconstituted in sterile pH 7.4 0.01M PBS or diluent of antibody the antibody is stable for at least two weeks at 2-4 °C.
PubMed:	PubMed
Product Detail:	Dystrophin is a large, rod-like cytoskeletal protein found at the inner surface of muscle fibers. Dystrophin is missing in Duchenne Muscular Dystrophy patients and is present in reduced amounts in Becker Muscular Dystrophy patients. The protein encoded by this gene is a peripheral membrane protein found associated with dystrophin and dystrophin-

related proteins. This gene is a member of the syntrophin gene family, which contains at least two other structurally-related genes. [provided by RefSeq, Jul 2008].

Function:

Adapter protein that binds to and probably organizes the subcellular localization of a variety of membrane proteins. May link various receptors to the actin cytoskeleton and the dystrophin glycoprotein complex.

Subunit:

Monomer and homodimer (Probable). Interacts with the other members of the syntrophin family SNTA1 and SNTB2; with the sodium channel proteins SCN4A and SCN5A. Interacts with the viral HTLV-1 TAX protein and with dystrophin protein DMD and related proteins DTNA and UTRN.

Subcellular Location:

Cell membrane, sarcolemma; Peripheral membrane protein; Cytoplasmic side. Cell junction. Cytoplasm, cytoskeleton. Note=In skeletal muscle, it localizes at the cytoplasmic side of the sarcolemmal membrane and at neuromuscular junctions.

Tissue Specificity:

Ubiquitous.

Post-translational modifications:

Phosphorylated by CaM-kinase II.

Similarity:

Belongs to the syntrophin family.
Contains 1 PDZ (DHR) domain.
Contains 2 PH domains.
Contains 1 SU (syntrophin unique) domain.

SWISS:

Q13884

Gene ID:

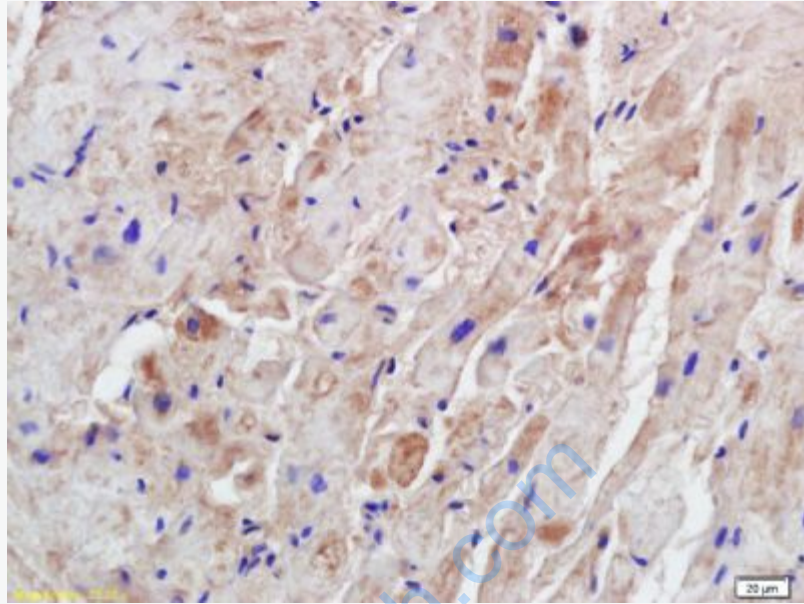
6641

Database links:

UniProtKB/Swiss-Prot: Q13884.3
GenBank: EAW92008.1
NCBI Reference Sequence: NP_066301.1

Important Note:

This product as supplied is intended for research use only, not for use in human, therapeutic or diagnostic applications.



Picture:

Tissue/cell: mouse heart tissue; 4% Paraformaldehyde-fixed and paraffin-embedded;
Antigen retrieval: citrate buffer (0.01M, pH 6.0), Boiling bathing for 15min; Block endogenous peroxidase by 3% Hydrogen peroxide for 30min; Blocking buffer (normal goat serum,C-0005) at 37°C for 20 min;
Incubation: Anti-Syntrophin-2 Polyclonal Antibody, Unconjugated(SL10384R) 1:200, overnight at 4°C, followed by conjugation to the secondary antibody(SP-0023) and DAB(C-0010) staining