



## Rabbit Anti-Pan Cytokeratin/p-CK antibody

SL10403R

<b>Product Name:</b>	Pan Cytokeratin/p-CK
<b>Chinese Name:</b>	广谱细胞角蛋白PCK抗体
<b>Alias:</b>	pan-cytokeratin; pan-CK; pan CK; P-CK; wide spectrum Cytokeratin; Cytokeratins; [cytokeratins 13, 14, 16, 17, 19, 24].
<b>文献引用</b> <b>PubMed</b> :	<b>Specific References(1)</b>  SL10403R has been referenced in 1 publications. [IF=2.60]Niu YN, Wang K, Jin S, Fan DD, Wang MS, Xing NZ, Xia SJ. "The intriguing role of fibroblasts and c-Jun in the chemopreventive and therapeutic effect of finasteride on xenograft models of prostate cancer." Asian J AndrolIHC-P;Mouse. <a href="#">PubMed:26698232</a>
<b>Organism Species:</b>	Rabbit
<b>Clonality:</b>	Polyclonal
<b>React Species:</b>	Human,Mouse,Rat,Dog,Cow,Horse,
<b>Applications:</b>	ELISA=1:500-1000IHC-P=1:400-800IHC-F=1:400-800ICC=1:100-500IF=1:100-500 (Paraffin sections need antigen repair) not yet tested in other applications. optimal dilutions/concentrations should be determined by the end user.
<b>Cellular localization:</b>	cytoplasmic
<b>Form:</b>	Lyophilized or Liquid
<b>Concentration:</b>	1mg/ml
<b>immunogen:</b>	KLH conjugated synthetic peptide derived from human cytokeratin 16:
<b>Lsotype:</b>	IgG
<b>Purification:</b>	affinity purified by Protein A
<b>Storage Buffer:</b>	0.01M TBS(pH7.4) with 1% BSA, 0.03% Proclin300 and 50% Glycerol.
<b>Storage:</b>	Store at -20 °C for one year. Avoid repeated freeze/thaw cycles. The lyophilized antibody is stable at room temperature for at least one month and for greater than a year when kept at -20°C. When reconstituted in sterile pH 7.4 0.01M PBS or diluent of antibody the antibody is stable for at least two weeks at 2-4 °C.

**PubMed:**[PubMed](#)

Cytokeratins, a group comprising at least 29 different proteins, are characteristic of epithelial and trichocytic cells. Cytokeratins 1, 4, 5, 6, and 8 are members of the type II neutral to basic subfamily. Antibody to cytokeratins are specific markers of epithelial cell differentiation and have been widely used as tools in tumor identification and classification. Anti Pan Cytokeratin (mixture) is a broadly reactive reagent, which recognizes epitopes present in most human epithelial tissues. It facilitates typing of normal, metaplastic and neoplastic cells. Synergy between the various components results in staining amplification. This enables identification of cells, which would otherwise be stained only marginally. The mixture may aid in the discrimination of carcinomas and nonepithelial tumors such as sarcomas, lymphomas and neural tumors. It is also useful in detecting micrometastases in lymph nodes, bone marrow and other tissues and for determining the origin of poorly differentiated tumors. There are two types of cytokeratins the acidic type I cytokeratins and the basic or neutral type II cytokeratins. Cytokeratins are usually found in pairs comprising a type I cytokeratin and a type II cytokeratin. Usually the type II cytokeratins are 8kD larger than their type I counterparts.

**Subcellular Location:**

Cytoplasmic.

**SWISS:**

P13646

**Gene ID:**

Pan Cytokeratin

**Database links:**

CK13:

[Entrez Gene: 3860](#)Human[Omid: 148065](#)Human[SwissProt: P13646](#)Human[Unigene: 654550](#)Human

CK14:

[Entrez Gene: 3861](#)Human[Omid: 148066](#)Human[SwissProt: P02533](#)Human**Product Detail:**

[Unigene: 654380](#)Human

CK16:

[Entrez Gene: 3868](#)Human

[Omim: 148067](#)Human

[SwissProt: P08779](#)Human

[Unigene: 655160](#)Human

CK17:

[Entrez Gene: 3872](#)Human

[Omim: 148069](#)Human

[SwissProt: Q04695](#)Human

[Unigene: 2785](#)Human

CK19:

[Entrez Gene: 3880](#)Human

[Omim: 148020](#)Human

[SwissProt: P08727](#)Human

[Unigene: 654568](#)Human

CK24:

[Entrez Gene: 192666](#)Human

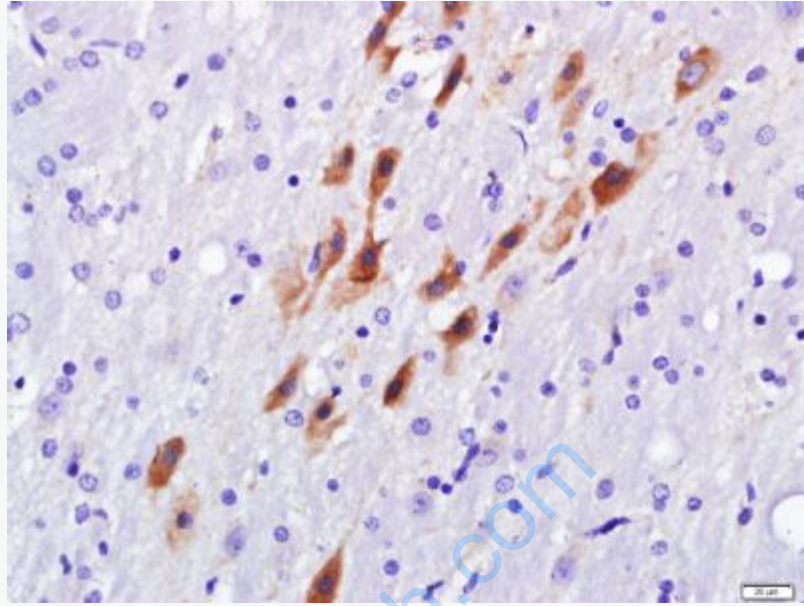
[Omim: 607742](#)Human

[SwissProt: Q2M2I5](#)Human

[Unigene: 87383](#)Human

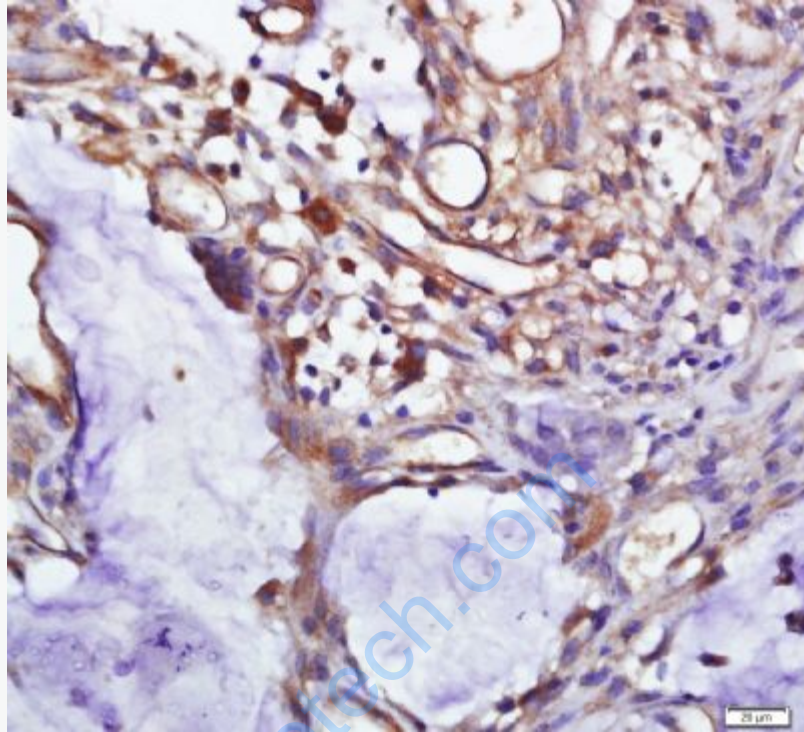
**Important Note:**

This product as supplied is intended for research use only, not for use in human, therapeutic or diagnostic applications.



**Picture:**

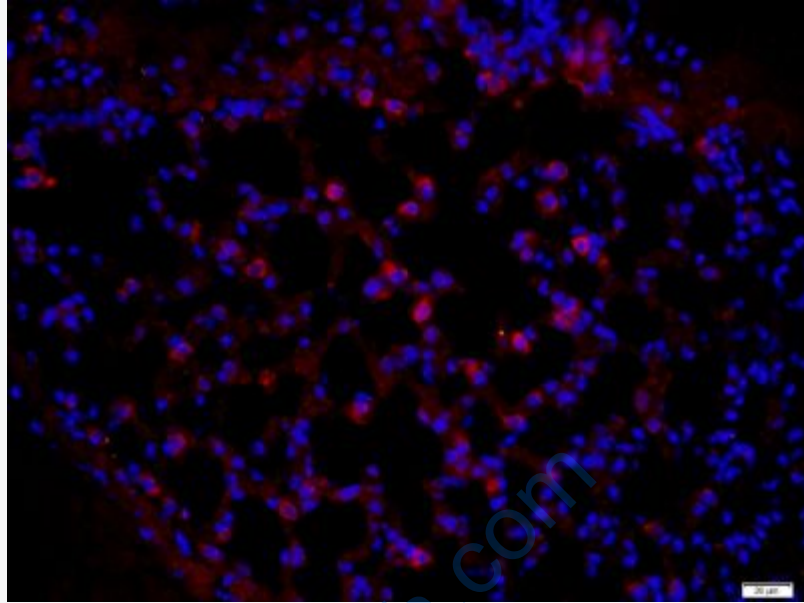
Tissue/cell: Rat brain tissue; 4% Paraformaldehyde-fixed and paraffin-embedded;  
Antigen retrieval: citrate buffer ( 0.01M, pH 6.0 ), Boiling bathing for 15min; Block endogenous peroxidase by 3% Hydrogen peroxide for 30min; Blocking buffer (normal goat serum,C-0005) at 37°C for 20 min;  
Incubation: Anti- Pan Cytokeratin Polyclonal Antibody, Unconjugated(SL10403R) 1:500, overnight at 4°C, followed by conjugation to the secondary antibody(SP-0023) and DAB(C-0010) staining



Tissue/cell: Human colon cancer; 4% Paraformaldehyde-fixed and paraffin-embedded;

Antigen retrieval: citrate buffer ( 0.01M, pH 6.0 ), Boiling bathing for 15min; Block endogenous peroxidase by 3% Hydrogen peroxide for 30min; Blocking buffer (normal goat serum,C-0005) at 37°C for 20 min;

Incubation: Anti- Pan Cytokeratin Polyclonal Antibody, Unconjugated(SL10403R) 1:500, overnight at 4°C, followed by conjugation to the secondary antibody(SP-0023) and DAB(C-0010) staining



Paraformaldehyde-fixed, paraffin embedded (mouse lung); Antigen retrieval by boiling in sodium citrate buffer (pH6) for 15min; Block endogenous peroxidase by 3% hydrogen peroxide for 20 minutes; Blocking buffer (normal goat serum) at 37°C for 30min; Antibody incubation with (Pan Cytokeratin) Polyclonal Antibody, Unconjugated (SL10403R) at 1:400 overnight at 4°C, followed by a conjugated secondary (Goat Anti-rabbit IgG/Bio) for 20minutes at 37°C, followed by a conjugated streptavidin (SL10403R) at [1:500] for 40 minutes and DAPI staining of the nuclei.