



Rabbit Anti-PTGFR antibody

SL10433R

Product Name:	PTGFR
Chinese Name:	前列腺素F2a受体抗体PGF2αR
Alias:	Prostaglandin F2 alpha Receptor PF2R_HUMAN; PGF receptor; PGF2 alpha receptor; PGF2-alpha receptor; Prostaglandin F receptor; Prostaglandin F2-alpha receptor; Prostaglandin receptor 2 alpha; Prostanoid FP receptor; PTGFR; FP; MGC120498; MGC46203.
Organism Species:	Rabbit
Clonality:	Polyclonal
React Species:	Human,Pig,Cow,Horse,
Applications:	WB=1:500-2000ELISA=1:500-1000IHC-P=1:400-800IHC-F=1:400-800ICC=1:100-500IF=1:100-500 (Paraffin sections need antigen repair) not yet tested in other applications. optimal dilutions/concentrations should be determined by the end user.
Molecular weight:	40kDa
Cellular localization:	The cell membrane
Form:	Lyophilized or Liquid
Concentration:	1mg/ml
immunogen:	KLH conjugated synthetic peptide derived from human PTGFR:121-220/359<Extracellular>
Lsotype:	IgG
Purification:	affinity purified by Protein A
Storage Buffer:	0.01M TBS(pH7.4) with 1% BSA, 0.03% Proclin300 and 50% Glycerol.
Storage:	Store at -20 °C for one year. Avoid repeated freeze/thaw cycles. The lyophilized antibody is stable at room temperature for at least one month and for greater than a year when kept at -20°C. When reconstituted in sterile pH 7.4 0.01M PBS or diluent of antibody the antibody is stable for at least two weeks at 2-4 °C.
PubMed:	PubMed
Product Detail:	The protein encoded by this gene is member of the G-protein coupled receptor family. This protein is a receptor for prostaglandin F2-alpha (PGF2-alpha), which is known to be a potent luteolytic agent, and may also be involved in modulating intraocular

pressure and smooth muscle contraction in uterus. Knockout studies in mice suggest that the interaction of PGF2-alpha with this receptor may initiate parturition in ovarian luteal cells and thus induce luteolysis. Two transcript variants encoding different isoforms have been found for this gene. [provided by RefSeq, Jul 2008]

Function:

Receptor for prostaglandin F2-alpha (PGF2-alpha). The activity of this receptor is mediated by G proteins which activate a phosphatidylinositol-calcium second messenger system. Initiates luteolysis in the corpus luteum.

Subcellular Location:

Cell membrane; Multi-pass membrane protein.

Similarity:

Belongs to the G-protein coupled receptor 1 family.

SWISS:

P43088

Gene ID:

5737

Database links:

[Entrez Gene: 5737](#)Human

[Omim: 600563](#)Human

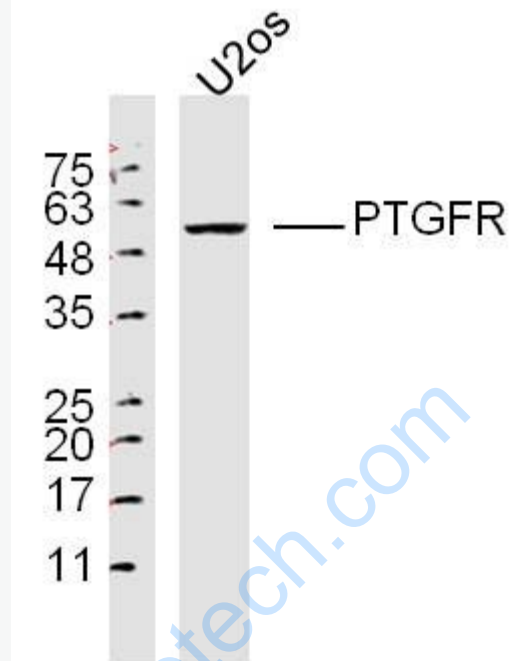
[SwissProt: P43088](#)Human

[Unigene: 654365](#)Human

Important Note:

This product as supplied is intended for research use only, not for use in human, therapeutic or diagnostic applications.

Picture:



Protein: U2os(human) lysates at 40ug; Primary: Anti-PTGFR (SL10433R) at 1:300;

Secondary: HRP conjugated Goat-Anti-Rabbit IgG(bse-0295G-HRP) at 1: 5000;

ECL excited the fluorescence;

Predicted band size :40 kD

Observed band size :50 kD