



## Rabbit Anti-CCL3 antibody

SL1045R

<b>Product Name:</b>	CCL3
<b>Chinese Name:</b>	巨噬细胞炎症因子1 $\alpha$ 抗体
<b>Alias:</b>	Tonsillar lymphocyte LD78 alpha protein; CCL 3; CCL3; Chemokine C C motif ligand 3; Chemokine CC Motif Ligand 3; G0/G1 switch regulatory protein 19 1; G0S19 1; G0S19 1 protein; Heparin binding chemotaxis protein antibody L2G25B; LD78ALPHA; Macrophage inflammatory protein 1 alpha; MIP 1 alpha; MIP-1 Alpha; MIP 1A; MIP1A; PAT 464.1; SCYA 3; SCYA3; SIS alpha; SIS beta; Small inducible cytokine A3; Tonsillar lymphocyte LD78 alpha protein; CCL3 HUMAN;
<b>Organism Species:</b>	Rabbit
<b>Clonality:</b>	Polyclonal
<b>React Species:</b>	Human,Mouse,Rat,
<b>Applications:</b>	ELISA=1:500-1000IHC-P=1:400-800IHC-F=1:400-800IF=1:100-500 (Paraffin sections need antigen repair) not yet tested in other applications. optimal dilutions/concentrations should be determined by the end user.
<b>Molecular weight:</b>	8kDa
<b>Cellular localization:</b>	Secretory protein
<b>Form:</b>	Lyophilized or Liquid
<b>Concentration:</b>	1mg/ml
<b>immunogen:</b>	KLH conjugated synthetic peptide derived from human MIP-1 alpha:41-92/92
<b>Lsotype:</b>	IgG
<b>Purification:</b>	affinity purified by Protein A
<b>Storage Buffer:</b>	0.01M TBS(pH7.4) with 1% BSA, 0.03% Proclin300 and 50% Glycerol.
<b>Storage:</b>	Store at -20 °C for one year. Avoid repeated freeze/thaw cycles. The lyophilized antibody is stable at room temperature for at least one month and for greater than a year when kept at -20°C. When reconstituted in sterile pH 7.4 0.01M PBS or diluent of antibody the antibody is stable for at least two weeks at 2-4 °C.
<b>PubMed:</b>	<a href="#">PubMed</a>
<b>Product Detail:</b>	Macrophage Inflammatory Protein 1 alpha (MIP1 alpha) and MIP1 beta, two closely related but distinct proteins, were originally co-purified from medium conditioned by a

LPS-stimulated murine macrophage cell line. Mature mouse MIP1 alpha shares approximately 77% and 70% amino acid identity with human MIP1 alpha and mouse MIP1 beta, respectively. MIP1 proteins are expressed primarily in T cells, B cells, and monocytes after antigen or mitogen stimulation. Has adhesive effects on lymphocytes. MIP1 alpha can inhibit the proliferation of hematopoietic stem cells in vitro as well as in vivo. A signal transducing receptor, designated the C-C chemokine receptor-1 (C-C CKR-1) with seven transmembrane domains that bind MIP1 alpha, MIP1 beta, MCP1 and RANTES with varying affinities, has been isolated.

**Function:**

Monokine with inflammatory and chemokinetic properties. Binds to CCR1, CCR4 and CCR5. One of the major HIV-suppressive factors produced by CD8+ T-cells. Recombinant MIP-1-alpha induces a dose-dependent inhibition of different strains of HIV-1, HIV-2, and simian immunodeficiency virus (SIV).

**Subunit:**

Self-associates. Also heterodimer of MIP-1-alpha(4-69) and MIP-1-beta(3-69).

**Subcellular Location:**

Secreted.

**Post-translational modifications:**

N-terminal processed form LD78-alpha(4-69) is produced by proteolytic cleavage after secretion from HTLV1-transformed T-cells.

**Similarity:**

Belongs to the intercrine beta (chemokine CC) family.

**SWISS:**

P10147

**Gene ID:**

6348

**Database links:**

[Entrez Gene: 6348](#) Human

[Entrez Gene: 20302](#) Mouse

[Entrez Gene: 25542](#) Rat

[Omim: 182283](#) Human

[SwissProt: P10147](#) Human

[SwissProt: P10855](#) Mouse

[SwissProt: P50229](#) Rat

[Unigene: 514107](#) Human

[Unigene: 1282](#) Mouse

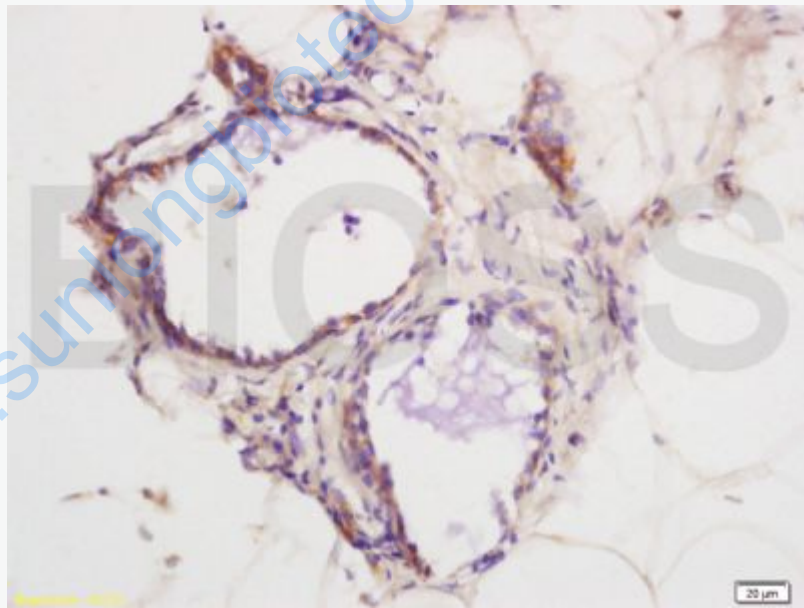
[Unigene: 10139](#) Rat

**Important Note:**

This product as supplied is intended for research use only, not for use in human, therapeutic or diagnostic applications.

巨噬细胞炎症蛋白1 $\alpha$ (MIP-1 $\alpha$ )是CCChemokine中的一种。主要用于炎症、Tumour方面的研究。

**Picture:**



Tissue/cell: rat exfoliated cells; 4% Paraformaldehyde-fixed and paraffin-embedded;  
Antigen retrieval: citrate buffer ( 0.01M, pH 6.0 ), Boiling bathing for 15min; Block  
endogenous peroxidase by 3% Hydrogen peroxide for 30min; Blocking buffer  
(normal goat serum,C-0005) at 37°C for 20 min;  
Incubation: Anti-MIP-1 Alpha/CCL3 Polyclonal Antibody,

	Unconjugated(SL1045R) 1:200, overnight at 4°C, followed by conjugation to the secondary antibody(SP-0023) and DAB(C-0010) staining
--	--

[www.sunlongbiotech.com](http://www.sunlongbiotech.com)