



Rabbit Anti-tinagl1 antibody

SL10505R

| | |
|-------------------------------|--|
| Product Name: | tinagl1 |
| Chinese Name: | tinagl1 抗体 |
| Alias: | TINAL_HUMAN; Tubulointerstitial nephritis antigen-like; Glucocorticoid-inducible protein 5; Oxidized LDL-responsive gene 2 protein; OLRG-2; Tubulointerstitial nephritis antigen-related protein; TIN Ag-related protein; Short=TIN-Ag-RP. |
| Organism Species: | Rabbit |
| Clonality: | Polyclonal |
| React Species: | Human,Mouse,Rat,Dog,Pig,Cow,Horse,Rabbit, |
| Applications: | ELISA=1:500-1000IHC-P=1:400-800IHC-F=1:400-800ICC=1:100-500IF=1:100-500 (Paraffin sections need antigen repair) not yet tested in other applications. optimal dilutions/concentrations should be determined by the end user. |
| Molecular weight: | 50kDa |
| Cellular localization: | Secretory protein |
| Form: | Lyophilized or Liquid |
| Concentration: | 1mg/ml |
| immunogen: | KLH conjugated synthetic peptide derived from human tinagl1:351-467/467 |
| Lsotype: | IgG |
| Purification: | affinity purified by Protein A |
| Storage Buffer: | 0.01M TBS(pH7.4) with 1% BSA, 0.03% Proclin300 and 50% Glycerol. |
| Storage: | Store at -20 °C for one year. Avoid repeated freeze/thaw cycles. The lyophilized antibody is stable at room temperature for at least one month and for greater than a year when kept at -20°C. When reconstituted in sterile pH 7.4 0.01M PBS or diluent of antibody the antibody is stable for at least two weeks at 2-4 °C. |
| PubMed: | PubMed |
| Product Detail: | The protein encoded by this gene is similar in sequence to tubulointerstitial nephritis antigen, a secreted glycoprotein that is recognized by antibodies in some types of immune-related tubulointerstitial nephritis. Three transcript variants encoding different isoforms have been found for this gene. [provided by RefSeq, Feb 2011]. |

Function:

May be implicated in the adrenocortical zonation and in mechanisms for repressing the CYP11B1 gene expression in adrenocortical cells. This is a non catalytic peptidase C1 family protein (By similarity).

Subcellular Location:

Secreted.

Tissue Specificity:

Highly expressed in aorta, heart, placenta, kidney and a colorectal adenocarcinoma cell line. Moderately expressed in skeletal muscle, pancreas, lung, lymph nodes, adrenal gland, bone marrow and thyroid. Weakly expressed in colon, small intestine, ovary, spleen, testis and prostate. Predominantly found in vascular smooth muscle cells, but also in cardiac and skeletal muscle cells as well as kidney.

Post-translational modifications:

Glycosylated.

Similarity:

Belongs to the peptidase C1 family.
Contains 1 SMB (somatomedin-B) domain.

SWISS:

Q9GZM7

Gene ID:

64129

Database links:

[Entrez Gene: 64129](#)Human

[Entrez Gene: 94242](#)Mouse

[Entrez Gene: 94174](#)Rat

[SwissProt: Q9GZM7](#)Human

[SwissProt: Q99JR5](#)Mouse

[SwissProt: Q9EQT5](#)Rat

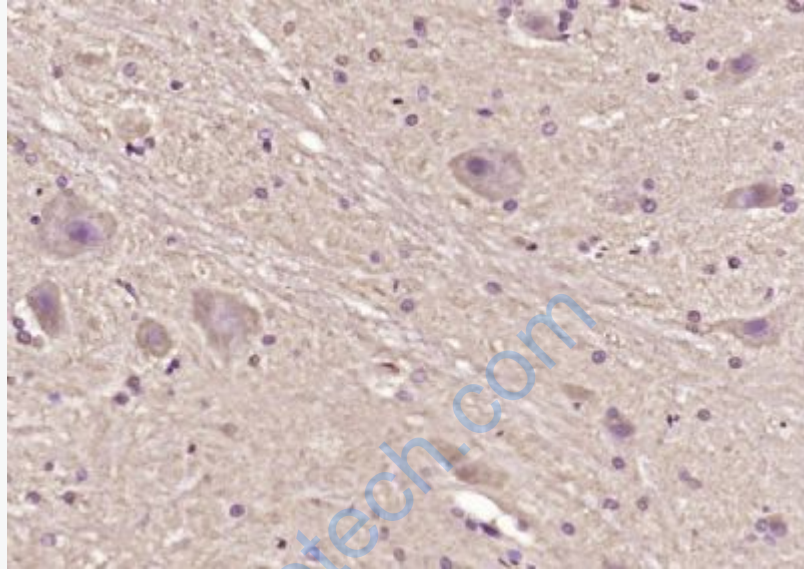
[Unigene: 199368](#)Human

[Unigene: 15801](#)Mouse

[Unigene: 1256](#)Rat

Important Note:

This product as supplied is intended for research use only, not for use in human, therapeutic or diagnostic applications.



Picture:

Paraformaldehyde-fixed, paraffin embedded (mouse brain); Antigen retrieval by boiling in sodium citrate buffer (pH6.0) for 15min; Block endogenous peroxidase by 3% hydrogen peroxide for 20 minutes; Blocking buffer (normal goat serum) at 37°C for 30min; Antibody incubation with (tinagl1) Polyclonal Antibody, Unconjugated (SL10505R) at 1:200 overnight at 4°C, followed by operating according to SP Kit(Rabbit) (sp-0023) instructions and DAB staining.