



Rabbit Anti-Integrin beta 7 antibody

SL1051R

Product Name:	Integrin beta 7
Chinese Name:	整合素β7抗体
Alias:	Gut homing receptor beta subunit; Integrin beta 7 subunit; Integrin beta-7; Integrin beta-P; Integrin, beta 7; ITB7; ITB7_HUMAN; Itgb7; Ly69; M290 IEL antigen; Integrin β7; Integrin β-7; Integrin-β7; Integrinβ7.
Organism Species:	Rabbit
Clonality:	Polyclonal
React Species:	Human,Mouse,Rat,
Applications:	WB=1:500-2000ELISA=1:500-1000IHC-P=1:400-800IHC-F=1:400-800IF=1:100-500 (Paraffin sections need antigen repair) not yet tested in other applications. optimal dilutions/concentrations should be determined by the end user.
Molecular weight:	85kDa
Cellular localization:	The cell membrane
Form:	Lyophilized or Liquid
Concentration:	1mg/ml
immunogen:	KLH conjugated synthetic peptide derived from human Integrin beta 7:721-806/806<Cytoplasmic>
Lsotype:	IgG
Purification:	affinity purified by Protein A
Storage Buffer:	0.01M TBS(pH7.4) with 1% BSA, 0.03% Proclin300 and 50% Glycerol.
Storage:	Store at -20 °C for one year. Avoid repeated freeze/thaw cycles. The lyophilized antibody is stable at room temperature for at least one month and for greater than a year when kept at -20°C. When reconstituted in sterile pH 7.4 0.01M PBS or diluent of antibody the antibody is stable for at least two weeks at 2-4 °C.
PubMed:	PubMed
Product Detail:	Integrin alpha-4/beta-7 (Peyer patches-specific homing receptor LPAM-1) is an adhesion molecule that mediates lymphocyte migration and homing to gut-associated lymphoid tissue (GALT). Integrin alpha-4/beta-7 interacts with the cell surface adhesion molecules MADCAM1 which is normally expressed by the vascular endothelium of the

gastrointestinal tract. Interacts also with VCAM1 and fibronectin, an extracellular matrix component. It recognizes one or more domains within the alternatively spliced CS-1 region of fibronectin. Interactions involves the tripeptide L-D-T in MADCAM1, and L-D-V in fibronectin. Binds to HIV-1 gp120, thereby allowing the virus to enter GALT, which is thought to be the major trigger of AIDS disease. Interaction would involve a tripeptide L-D-I in HIV-1 gp120. Integrin alpha-E/beta-7 (HML-1) is a receptor for E-cadherin.

Function:

Integrin alpha-4/beta-7 (Peyer patches-specific homing receptor LPAM-1) is an adhesion molecule that mediates lymphocyte migration and homing to gut-associated lymphoid tissue (GALT). Integrin alpha-4/beta-7 interacts with the cell surface adhesion molecules MADCAM1 which is normally expressed by the vascular endothelium of the gastrointestinal tract. Interacts also with VCAM1 and fibronectin, an extracellular matrix component. It recognizes one or more domains within the alternatively spliced CS-1 region of fibronectin. Interactions involves the tripeptide L-D-T in MADCAM1, and L-D-V in fibronectin. Binds to HIV-1 gp120, thereby allowing the virus to enter GALT, which is thought to be the major trigger of AIDS disease. Interaction would involve a tripeptide L-D-I in HIV-1 gp120. Integrin alpha-E/beta-7 (HML-1) is a receptor for E-cadherin.

Subunit:

Heterodimer of an alpha and a beta subunit. Beta-7 associates with either alpha-4 or alpha-E. Integrin alpha-4/beta-7 interacts with MADCAM1, VCAM, fibronectin, and may also interact with HIV-1 gp120.

Subcellular Location:

Membrane; Single-pass type I membrane protein.

Tissue Specificity:

Expressed in a variety of leukocyte lines.

Similarity:

Belongs to the integrin beta chain family.

Contains 1 VWFA domain.

SWISS:

P26011

Gene ID:

3695

Database links:

[Entrez Gene: 3695](#)Human

[Entrez Gene: 16421](#)Mouse

[Omim: 147559](#)Human

[SwissProt: P26010](#)Human

[SwissProt: P26011](#)Mouse

[Unigene: 654470](#)Human

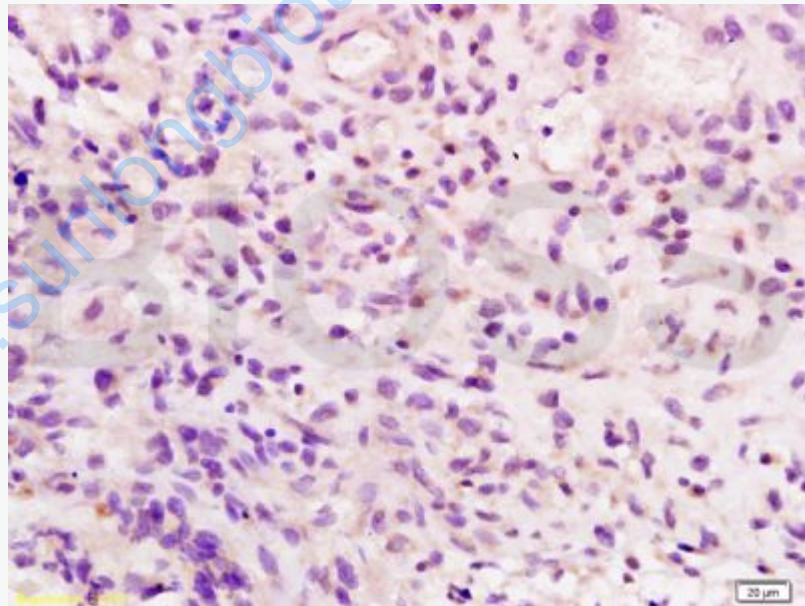
[Unigene: 58](#)Mouse

Important Note:

This product as supplied is intended for research use only, not for use in human, therapeutic or diagnostic applications.

整合素 $\alpha 4\beta 7$ 为黏膜归巢受体, 是一种新的人类免疫缺陷病毒1(HIV-1)受体—整合素 $\alpha 4\beta 7$ (integrin $\alpha 4\beta 7$)被发现, 在HIV进入人体后此受体引导其至消化道。此HIV受体的发现也许可解释为什么消化道为HIV复制的主要场所, 整合蛋白表达高低与TumourCell biology学行为关系的研究受到重视。

Picture:



Tissue/cell: human glioma tissue; 4% Paraformaldehyde-fixed and paraffin-embedded;

Antigen retrieval: citrate buffer (0.01M, pH 6.0), Boiling bathing for 15min; Block endogenous peroxidase by 3% Hydrogen peroxide for 30min; Blocking buffer

(normal goat serum,C-0005) at 37°C for 20 min;

Incubation: Anti-Integrin beta 7 Polyclonal Antibody, Unconjugated(SL1051R)

1:200, overnight at 4°C, followed by conjugation to the secondary antibody(SP-

0023) and DAB(C-0010) staining

www.sunlongbiotech.com