



## Rabbit Anti-Cathepsin L(heavy chain) antibody

SL10523R

<b>Product Name:</b>	Cathepsin L(heavy chain)
<b>Chinese Name:</b>	组织蛋白酶L抗体
<b>Alias:</b>	Cathepsin L; Major Excreted Protein; Cathepsin L1; EC 3.4.22.15; CTSL1; MEP; EC 3.4.22; CATL; CATL1_MOUSE;
<b>Organism Species:</b>	Rabbit
<b>Clonality:</b>	Polyclonal
<b>React Species:</b>	Human,Mouse,Rat,
<b>Applications:</b>	WB=1:500-2000ELISA=1:500-1000IHC-P=1:400-800IHC-F=1:400-800ICC=1:100-500IF=1:100-500 (Paraffin sections need antigen repair) not yet tested in other applications. optimal dilutions/concentrations should be determined by the end user.
<b>Molecular weight:</b>	19/37kDa
<b>Cellular localization:</b>	cytoplasmic
<b>Form:</b>	Lyophilized or Liquid
<b>Concentration:</b>	1mg/ml
<b>immunogen:</b>	KLH conjugated synthetic peptide derived from mouse Cathepsin L:101-200/334
<b>Lsotype:</b>	IgG
<b>Purification:</b>	affinity purified by Protein A
<b>Storage Buffer:</b>	0.01M TBS(pH7.4) with 1% BSA, 0.03% Proclin300 and 50% Glycerol.
<b>Storage:</b>	Store at -20 °C for one year. Avoid repeated freeze/thaw cycles. The lyophilized antibody is stable at room temperature for at least one month and for greater than a year when kept at -20°C. When reconstituted in sterile pH 7.4 0.01M PBS or diluent of antibody the antibody is stable for at least two weeks at 2-4 °C.
<b>PubMed:</b>	<a href="#">PubMed</a>
<b>Product Detail:</b>	The protein encoded by this gene is a lysosomal cysteine proteinase that plays a major role in intracellular protein catabolism. Its substrates include collagen and elastin, as well as alpha-1 protease inhibitor, a major controlling element of neutrophil elastase activity. The encoded protein has been implicated in several pathologic processes, including myofibril necrosis in myopathies and in myocardial ischemia, and in the renal tubular response to proteinuria. This protein, which is a member of the peptidase C1

family, is a dimer composed of disulfide-linked heavy and light chains, both produced from a single protein precursor. Multiple alternatively spliced transcript variants have been found for this gene. [provided by RefSeq, Apr 2012]

**Function:**

Important for the overall degradation of proteins in lysosomes.

**Subunit:**

Dimer of a heavy and a light chain linked by disulfide bonds.

**Subcellular Location:**

Lysosome.

**Similarity:**

Belongs to the peptidase C1 family.

**SWISS:**

P06797

**Gene ID:**

13039

**Database links:**

[Entrez Gene: 13039](#)Mouse

[Entrez Gene: 25697](#)Rat

[SwissProt: P06797](#)Mouse

[SwissProt: P07154](#)Rat

[Unigene: 930](#)Mouse

[Unigene: 1294](#)Rat

**Important Note:**

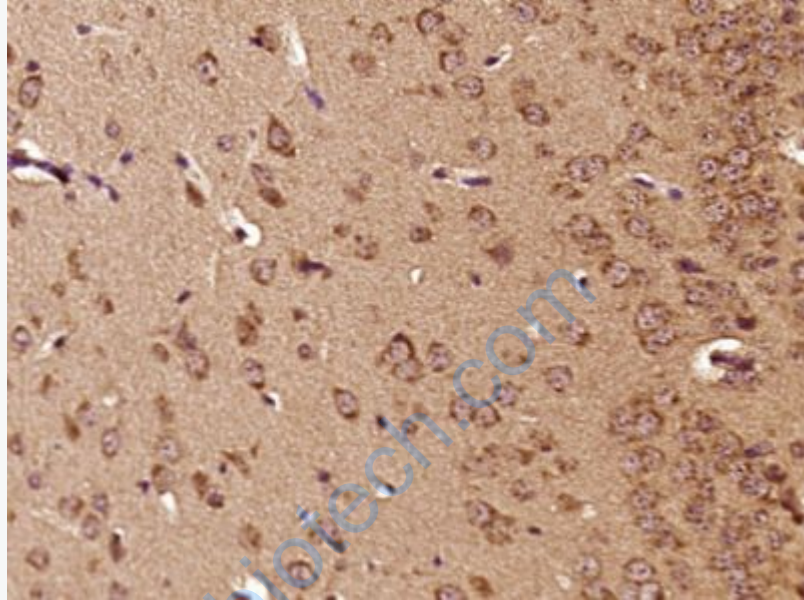
This product as supplied is intended for research use only, not for use in human, therapeutic or diagnostic applications.

**Synthesis and Degradation (Synthesis and Degradation)**

组织蛋白酶L(cathepsin L

CL)属于木瓜蛋白酶家族中的半胱氨酸蛋白水解酶,以酶原的形式贮存于溶酶体中.参与许多特殊的生理过程,如激素原的激活、抗原呈递、组织器官的发育等。

在病理状态下, 因各种原因所致的细胞损伤(如病原微生物、炎症因子、氧化应激等)可降解细胞成分或细胞间质基质成分, 包括层粘素、IV型胶原纤维及纤维连接素等, 与人类许多疾病如Tumour的浸润与转移、关节炎、骨质疏松、阿尔茨海姆病、多发性硬化症及其他慢性炎症性疾病有关.



Picture:

Paraformaldehyde-fixed, paraffin embedded (Mouse brain); Antigen retrieval by boiling in sodium citrate buffer (pH6.0) for 15min; Block endogenous peroxidase by 3% hydrogen peroxide for 20 minutes; Blocking buffer (normal goat serum) at 37°C for 30min; Antibody incubation with (Cathepsin L) Polyclonal Antibody, Unconjugated (SL10523R) at 1:400 overnight at 4°C, followed by operating according to SP Kit(Rabbit) (sp-0023) instructions and DAB staining.