



## Rabbit Anti-TTF1 antibody

SL10539R

<b>Product Name:</b>	TTF1
<b>Chinese Name:</b>	甲状腺核转录因子-1抗体
<b>Alias:</b>	thyroid transcription factor1; NK2 homeobox 1; benign chorea; NK-2 homolog A; thyroid nuclear factor; thyroid transcription factor 1; NKX2-1; NKX2.1; BCH; BHC; NK-2; TEBP; TTF1; NKX2A; TITF1; TTF-1; NKX2.1; ZO1_HUMAN.
<b>Organism Species:</b>	Rabbit
<b>Clonality:</b>	Polyclonal
<b>React Species:</b>	Human,Mouse,Rat,Chicken,Cow,Sheep,
<b>Applications:</b>	WB=1:500-2000ELISA=1:500-1000Flow-Cyt=1µg/Test not yet tested in other applications. optimal dilutions/concentrations should be determined by the end user.
<b>Molecular weight:</b>	38kDa
<b>Cellular localization:</b>	The nucleus
<b>Form:</b>	Lyophilized or Liquid
<b>Concentration:</b>	1mg/ml
<b>immunogen:</b>	KLH conjugated synthetic peptide derived from human TTF1:121-220/371
<b>Lsotype:</b>	IgG
<b>Purification:</b>	affinity purified by Protein A
<b>Storage Buffer:</b>	0.01M TBS(pH7.4) with 1% BSA, 0.03% Proclin300 and 50% Glycerol.
<b>Storage:</b>	Store at -20 °C for one year. Avoid repeated freeze/thaw cycles. The lyophilized antibody is stable at room temperature for at least one month and for greater than a year when kept at -20°C. When reconstituted in sterile pH 7.4 0.01M PBS or diluent of antibody the antibody is stable for at least two weeks at 2-4 °C.
<b>PubMed:</b>	<a href="#">PubMed</a>
<b>Product Detail:</b>	This gene encodes a protein initially identified as a thyroid-specific transcription factor. The encoded protein binds to the thyroglobulin promoter and regulates the expression of thyroid-specific genes but has also been shown to regulate the expression of genes involved in morphogenesis. Mutations and deletions in this gene are associated with benign hereditary chorea, choreoathetosis, congenital hypothyroidism, and neonatal respiratory distress, and may be associated with thyroid cancer. Multiple transcript

variants encoding different isoforms have been found for this gene. This gene shares the symbol/alias 'TFF1' with another gene, transcription termination factor 1, which plays a role in ribosomal gene transcription. [provided by RefSeq, Apr 2011]

**Function:**

Transcription factor that binds and activates the promoter of thyroid specific genes such as thyroglobulin, thyroperoxidase, and thyrotropin receptor. Crucial in the maintenance of the thyroid differentiation phenotype. May play a role in lung development and surfactant homeostasis.

**Subcellular Location:**

Nucleus.

**Tissue Specificity:**

Thyroid, lung and CNS. Expressed in restricted regions of the developing brain within the diencephalon, in parts of the hypothalamus and neurohypophysis, and in the telencephalon.

**Post-translational modifications:**

Phosphorylated on serine residues by STK3.

**Similarity:**

Belongs to the NK-2 homeobox family.  
Contains 1 homeobox DNA-binding domain.

**SWISS:**

P43699

**Gene ID:**

7080

**Database links:**

[Entrez Gene: 7080](#)Human

[Entrez Gene: 21869](#)Mouse

[Entrez Gene: 25628](#)Rat

[Omin: 600635](#)Human

[SwissProt: P43699](#)Human

[SwissProt: P50220](#)Mouse

[SwissProt: P23441](#)Rat

[Unigene: 94367](#)Human

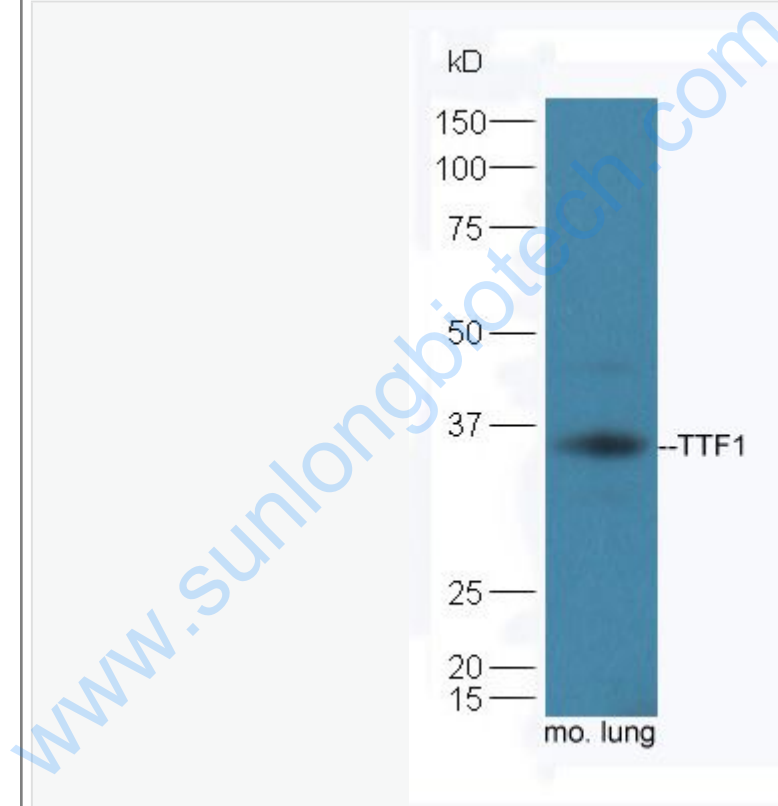
[Unigene: 89972](#)Mouse

[Unigene: 34265](#)Rat

**Important Note:**

This product as supplied is intended for research use only, not for use in human, therapeutic or diagnostic applications.

**Picture:**



Protein: lung(mouse) lysates at 40ug;

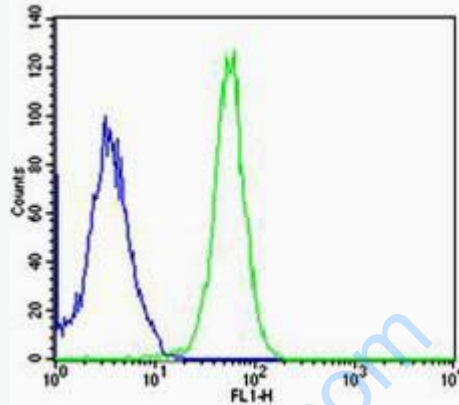
Primary: Anti-TTF1 (SL10539R) at 1:300;

Secondary: HRP conjugated Goat-Anti-Rabbit IgG(bse-0295G-HRP) at 1: 5000;

ECL excited the fluorescence;

Predicted band size : 38 kD

Observed band size : 36 kD

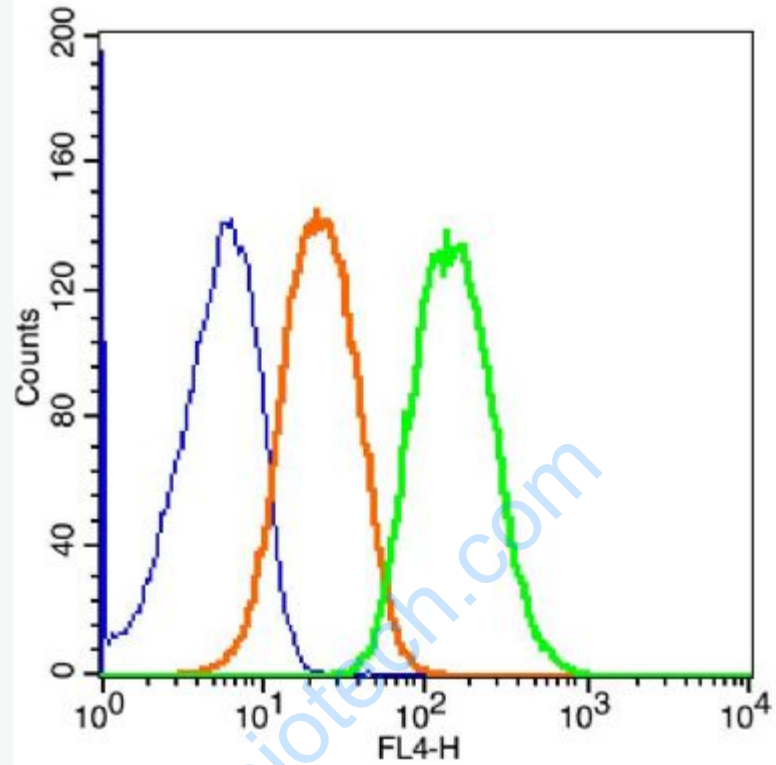


Cell: A549

Concentration:1:100

Host/Isotype:Rabbit/IgG (blue)

Flow cytometric analysis of Rabbit IgG isotype control (Cat#: bs-10539R) on A549(green) compared with control in the absence of primary antibody (blue) followed by Alexa Fluor 488-conjugated goat anti-rabbit IgG(H+L) secondary antibody .



Blank control(blue): RSC96 Cells(fixed with 2% paraformaldehyde (10 min) and then permeabilized with ice-cold 90% methanol for 30 min on ice).

Primary Antibody: Rabbit Anti-TTF1/AF647 Conjugated antibody (SL10539R),

Dilution: 1 $\mu$ g in 100  $\mu$ L 1X PBS containing 0.5% BSA;

Isotype Control Antibody: Rabbit IgG/AF647(orange) ,used under the same conditions.