



Rabbit Anti-FBXO42 antibody

SL10560R

Product Name:	FBXO42
Chinese Name:	FBXO42蛋白抗体
Alias:	F box only protein 42; F box protein 42; FBX42; FBXO 42; KIAA1332; FBX42 HUMAN.
Organism Species:	Rabbit
Clonality:	Polyclonal
React Species:	Human,Mouse,Rat,Chicken,Dog,Cow,Horse,Rabbit,Sheep,
Applications:	WB=1:500-2000ELISA=1:500-1000IHC-P=1:400-800IHC-F=1:400-800ICC=1:100-500IF=1:100-500 (Paraffin sections need antigen repair) not yet tested in other applications. optimal dilutions/concentrations should be determined by the end user.
Molecular weight:	78kDa
Cellular localization:	The nucleus
Form:	Lyophilized or Liquid
Concentration:	1mg/ml
immunogen:	KLH conjugated synthetic peptide derived from human FBXO42:621-717/717
Lsotype:	IgG
Purification:	affinity purified by Protein A
Storage Buffer:	0.01M TBS(pH7.4) with 1% BSA, 0.03% Proclin300 and 50% Glycerol.
Storage:	Store at -20 °C for one year. Avoid repeated freeze/thaw cycles. The lyophilized antibody is stable at room temperature for at least one month and for greater than a year when kept at -20°C. When reconstituted in sterile pH 7.4 0.01M PBS or diluent of antibody the antibody is stable for at least two weeks at 2-4 °C.
PubMed:	PubMed
Product Detail:	FBXO42 (F-box only protein 42) is a 717 amino acid protein that contains four Kelch repeats and one N-terminal F-box domain, and belongs to the F-box family of proteins. F-box proteins are critical components of the SCF (Skp1-CUL-1-F-box protein) type E3 ubiquitin ligase complex and are involved in substrate recognition and recruitment for ubiquitination. They are members of a larger family of proteins that are involved in the regulation of a wide variety of cellular processes (including the cell cycle, immune

response, signaling cascades and developmental processes) through the targeting of proteins, such as cyclins, cyclin-dependent kinase inhibitors, I κ B- α and b-catenin, for degradation by the proteasome after ubiquitination.

Function:

Substrate-recognition component of some SCF(SKP1-CUL1-F-box protein)-type E3 ubiquitin ligase complex. Specifically recognizes p53/TP53, promoting its ubiquitination and degradation.

Subunit:

Component of some SCF complex, composed of CUL1, SKP1, RBX1 and FBXO42. Interacts (via the kelch domain) with p53/TP53; interaction is direct.

Tissue Specificity:

Expressed at moderate levels in liver, ovary, kidney, testis and adult brain, and at low levels in heart and fetal brain, FBXO42 directly interacts with Skp1 p19 and CUL-1.

Similarity:

Contains 1 F-box domain.
Contains 4 Kelch repeats.

SWISS:

Q6P3S6

Gene ID:

54455

Database links:

[Entrez Gene: 54455](#) Human

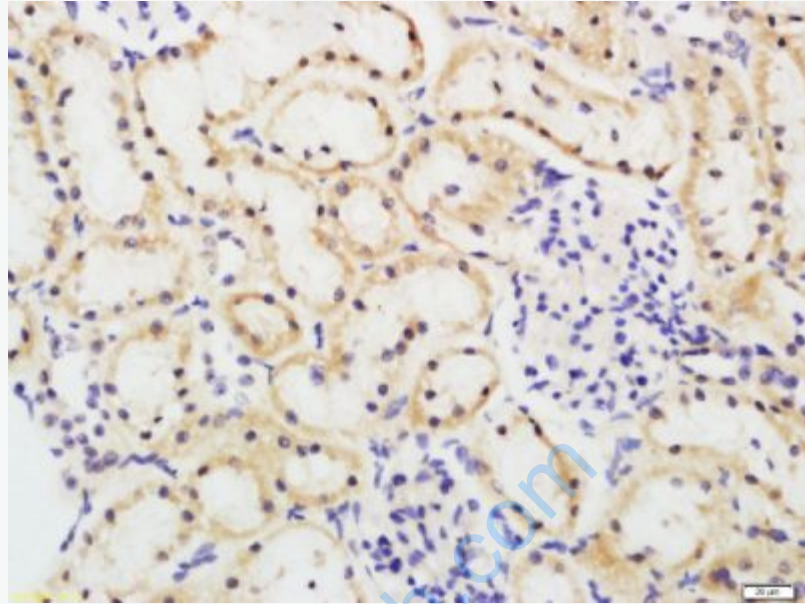
[Omicron: 609109](#) Human

[SwissProt: Q6P3S6](#) Human

[Unigene: 522384](#) Human

Important Note:

This product as supplied is intended for research use only, not for use in human, therapeutic or diagnostic applications.



Picture:

Tissue/cell: mouse kidney tissue; 4% Paraformaldehyde-fixed and paraffin-embedded;

Antigen retrieval: citrate buffer (0.01M, pH 6.0), Boiling bathing for 15min; Block endogenous peroxidase by 3% Hydrogen peroxide for 30min; Blocking buffer (normal goat serum,C-0005) at 37°C for 20 min;

Incubation: Anti-FBXO42 Polyclonal Antibody, Unconjugated(SL10560R) 1:200, overnight at 4°C, followed by conjugation to the secondary antibody(SP-0023) and DAB(C-0010) staining