



## Rabbit Anti-Integrin Alpha 3 + Beta 1 antibody

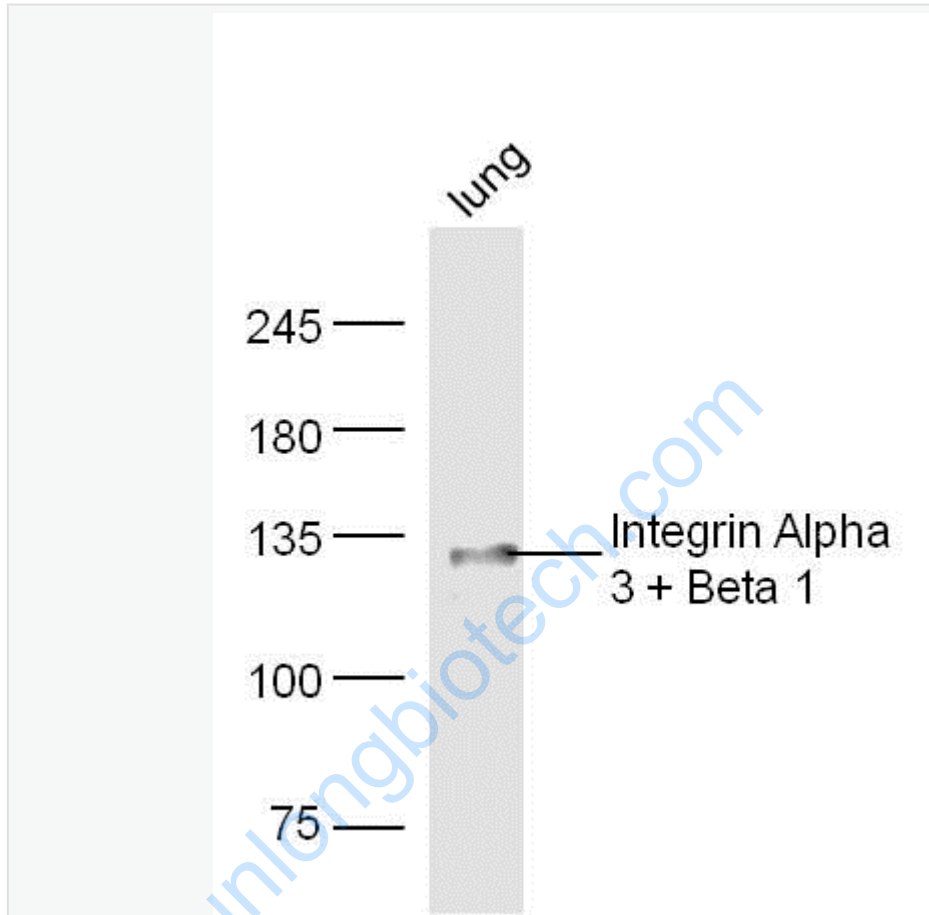
SL1057R

<b>Product Name:</b>	Integrin Alpha 3 + Beta 1
<b>Chinese Name:</b>	整合素 $\alpha 3\beta 1$ 抗体
<b>Alias:</b>	Integrin Alpha 3 / Beta 1; Integrin VLA 4 beta subunit; Alpha 3 subunit of VLA 3 receptor; CD29; CD49C; Fibronectin receptor; Fibronectin receptor beta subunit; Galactoprotein B3; GAPB3; VL3A; VLA 3 alpha chain; VLA3a.
<b>文献引用</b> <b>PubMed</b> :	<b>Specific References(1)</b>  SL1057R has been referenced in 1 publications. [IF=5.18]Wang, G., et al. "PAK1 regulates RUFY3-mediated gastric cancer cell migration and invasion." Cell Death & Disease 6.3 (2015): e1682. <b>Human</b> . <a href="https://pubmed.ncbi.nlm.nih.gov/25766321/">PubMed:25766321</a>
<b>Organism Species:</b>	Rabbit
<b>Clonality:</b>	Polyclonal
<b>React Species:</b>	Human, Mouse, Rat, Dog, Pig, Cow, Horse, Sheep,
<b>Applications:</b>	WB=1:500-2000ELISA=1:500-1000IHC-P=1:400-800IHC-F=1:400-800IF=1:100-500 (Paraffin sections need antigen repair) not yet tested in other applications. optimal dilutions/concentrations should be determined by the end user.
<b>Molecular weight:</b>	115kDa
<b>Cellular localization:</b>	The nucleuscytoplasmic
<b>Form:</b>	Lyophilized or Liquid
<b>Concentration:</b>	1mg/ml
<b>immunogen:</b>	KLH conjugated synthetic peptide derived from human Integrin Alpha 3(976-1025aa) + Beta 1(35-47aa):
<b>Lsotype:</b>	IgG
<b>Purification:</b>	affinity purified by Protein A
<b>Storage Buffer:</b>	0.01M TBS(pH7.4) with 1% BSA, 0.03% Proclin300 and 50% Glycerol.
<b>Storage:</b>	Store at -20 °C for one year. Avoid repeated freeze/thaw cycles. The lyophilized antibody is stable at room temperature for at least one month and for greater than a year

	when kept at -20°C. When reconstituted in sterile pH 7.4 0.01M PBS or diluent of antibody the antibody is stable for at least two weeks at 2-4 °C.
<b>PubMed:</b>	<a href="#">PubMed</a>
<b>Product Detail:</b>	<p>The protein encoded by this gene belongs to the family of integrins. Integrins are heterodimeric integral membrane proteins composed of an alpha chain and a beta chain, and function as cell surface adhesion molecules. This gene encodes alpha 3 subunit, which undergoes post-translational cleavage in the extracellular domain to yield disulfide-linked light and heavy chains that join with beta 1 subunit to form an integrin that interacts with many extracellular-matrix proteins. Alternatively spliced transcript variants encoding different isoforms have been identified for this gene. [provided by RefSeq, Oct 2008]</p> <p><b>Function:</b> Integrin alpha-3/beta-1 is a receptor for fibronectin, laminin, collagen, epiligrin, thrombospondin and CSPG4. Alpha-3/beta-1 may mediate with LGALS3 the stimulation by CSPG4 of endothelial cells migration.</p> <p><b>Subunit:</b> Heterodimer of an alpha and a beta subunit. The alpha subunit is composed of an heavy and a light chain linked by a disulfide bond. Alpha-3 associates with beta-1. Interacts with HPS5.</p> <p><b>Subcellular Location:</b> Membrane; Single-pass type I membrane protein.</p> <p><b>SWISS:</b> P05556</p> <p><b>Gene ID:</b> 3675</p> <p><b>Database links:</b>  <a href="#">Entrez Gene: 3675</a>Human  <a href="#">Entrez Gene: 3688</a>Human  <a href="#">Oimim: 135630</a>Human  <a href="#">Oimim: 605025</a>Human  <a href="#">SwissProt: P05556</a>Human  <a href="#">SwissProt: P26006</a>Human</p> <p><b>Important Note:</b> This product as supplied is intended for research use only, not for use in human,</p>

therapeutic or diagnostic applications.

Picture:



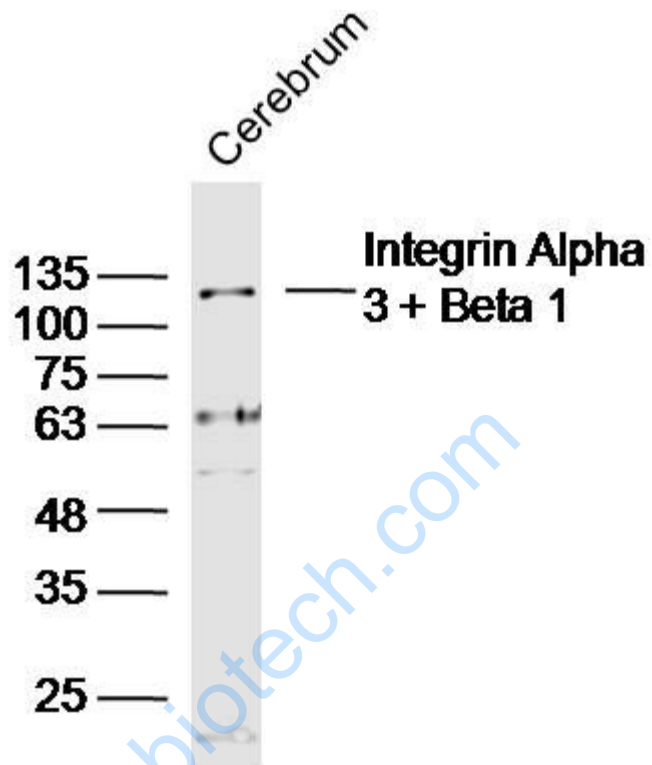
Sample: Lung (Mouse) Lysate at 30 ug

Primary: Anti- Integrin Alpha 3 + Beta 1 (SL1057R) at 1/300 dilution

Secondary: IRDye800CW Goat Anti-Rabbit IgG at 1/20000 dilution

Predicted band size: 115 kD

Observed band size: 130 kD



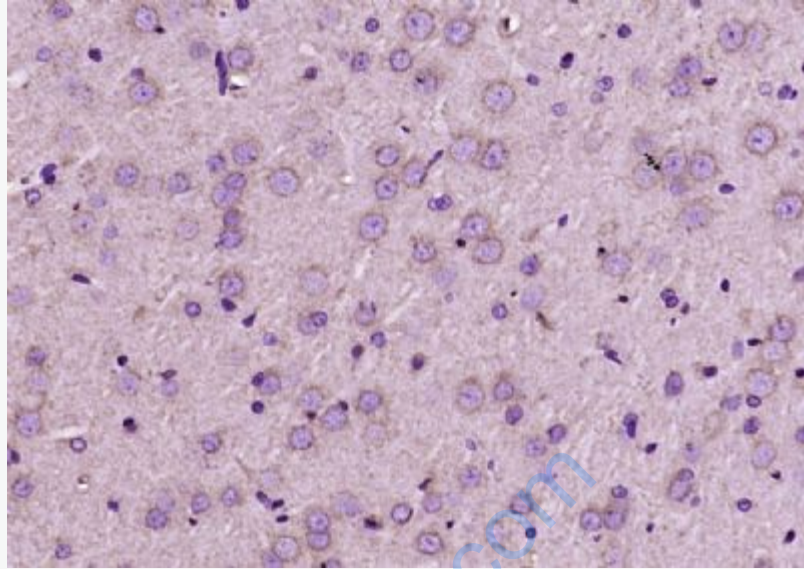
Sample: Cerebrum (Mouse) Lysate at 30 ug

Primary: Anti- Integrin Alpha 3 + Beta 1 (SL1057R) at 1/300 dilution

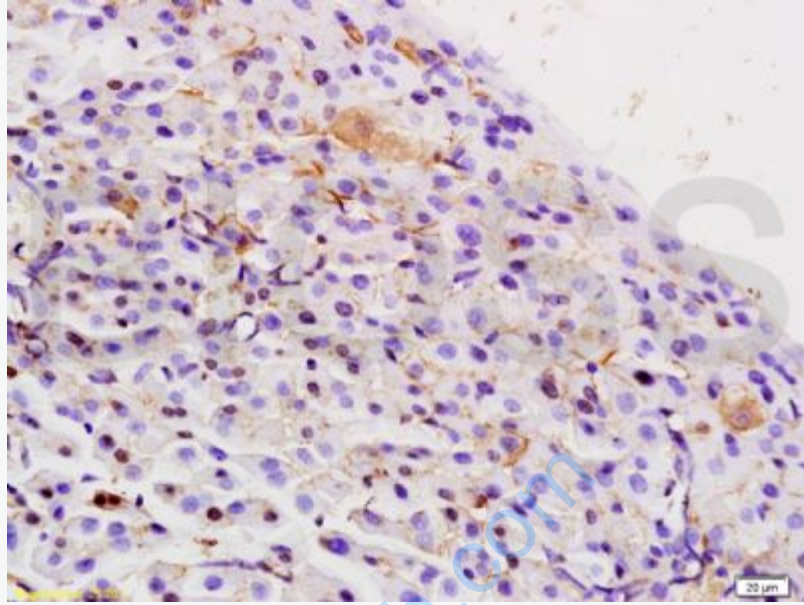
Secondary: IRDye800CW Goat Anti-Rabbit IgG at 1/20000 dilution

Predicted band size: 115 kD

Observed band size: 117 kD



Paraformaldehyde-fixed, paraffin embedded (rat brain); Antigen retrieval by boiling in sodium citrate buffer (pH6.0) for 15min; Block endogenous peroxidase by 3% hydrogen peroxide for 20 minutes; Blocking buffer (normal goat serum) at 37°C for 30min; Antibody incubation with (Integrin Alpha 3 + Beta 1) Polyclonal Antibody, Unconjugated (SL1057R) at 1:200 overnight at 4°C, followed by operating according to SP Kit(Rabbit) (sp-0023) instructions and DAB staining.



Tissue/cell: rat pancreas tissue; 4% Paraformaldehyde-fixed and paraffin-embedded;  
Antigen retrieval: citrate buffer ( 0.01M, pH 6.0 ), Boiling bathing for 15min; Block endogenous peroxidase by 3% Hydrogen peroxide for 30min; Blocking buffer (normal goat serum,C-0005) at 37°C for 20 min;  
Incubation: Anti-Integrin Alpha 3 + Beta 1 Polyclonal Antibody, Unconjugated(SL1057R) 1:200, overnight at 4°C, followed by conjugation to the secondary antibody(SP-0023) and DAB(C-0010) staining