



Rabbit Anti-LIF antibody

SL1058R

Product Name:	LIF
Chinese Name:	白血病抑制因子抗体
Alias:	DIA; CDF; Cholinergic Differentiation Factor; D factor; differentiation inhibitory activity; Differentiation stimulating factor; Differentiation-stimulating factor; Emfilermin; HILDA; Human interleukin in DA cells; Leukemia inhibitory factor; LIF; LIF_HUMAN; Melanoma derived LPL inhibitor; Melanoma-derived LPL inhibitor; MLPLI.
文献引用 PubMed :	Specific References(1) SL1058R has been referenced in 1 publications. [IF=1.18]Liang, Youde, et al. "Expression of LIF and LIFR in periodontal tissue during orthodontic tooth movement." The Angle Orthodontist 81.4 (2011): 600-608.IHC-P;Rat. PubMed:21446866
Organism Species:	Rabbit
Clonality:	Polyclonal
React Species:	Human,Mouse,Rat,Dog,Pig,Cow,Rabbit,
Applications:	WB=1:500-2000ELISA=1:500-1000IHC-P=1:400-800IHC-F=1:400-800IF=1:100-500 (Paraffin sections need antigen repair) not yet tested in other applications. optimal dilutions/concentrations should be determined by the end user.
Molecular weight:	20kDa
Cellular localization:	Secretory protein
Form:	Lyophilized or Liquid
Concentration:	1mg/ml
immunogen:	KLH conjugated synthetic peptide derived from human LIF:101-202/202
Lsotype:	IgG
Purification:	affinity purified by Protein A
Storage Buffer:	0.01M TBS(pH7.4) with 1% BSA, 0.03% Proclin300 and 50% Glycerol.
Storage:	Store at -20 °C for one year. Avoid repeated freeze/thaw cycles. The lyophilized

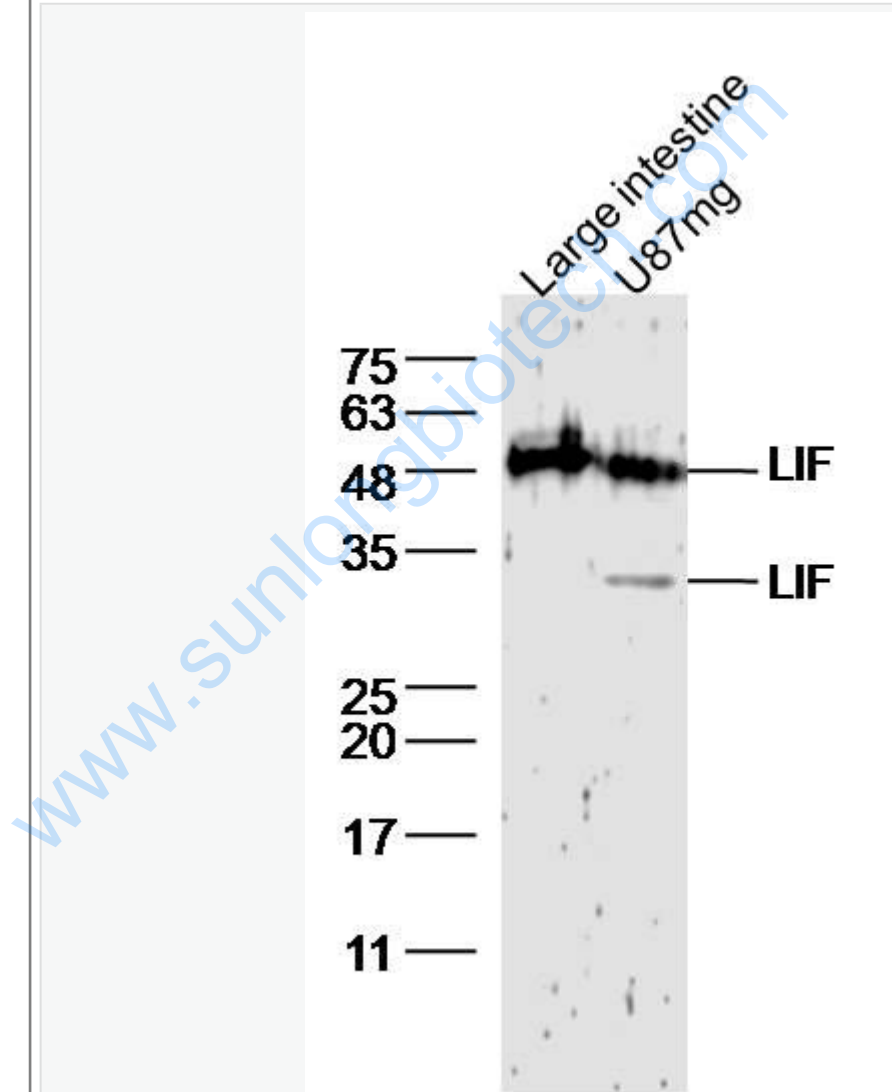
	antibody is stable at room temperature for at least one month and for greater than a year when kept at -20°C. When reconstituted in sterile pH 7.4 0.01M PBS or diluent of antibody the antibody is stable for at least two weeks at 2-4 °C.
PubMed:	PubMed
Product Detail:	<p>The leukemia inhibitory factor- LIF is a kind of cell factor that has various living creature functions. It has the leukemia cell of inducement to divide, regulating the growth metabolism of the bone organization, maintaining the basic characteristic of the Embryonic stem cells and promoting the mankind build the blood stem cell to divide to propagate, promote the cholinergic neuron to divide, obstruct the fat cell to synthesize, stimulate the muscle cell growth, regulate the liver cell to expect to respond the egg white to synthesize etc. in the acute the biology activity etc. function.</p> <p>Function: LIF has the capacity to induce terminal differentiation in leukemic cells. Its activities include the induction of hematopoietic differentiation in normal and myeloid leukemia cells, the induction of neuronal cell differentiation, and the stimulation of acute-phase protein synthesis in hepatocytes.</p> <p>Subcellular Location: Secreted.</p> <p>Similarity: Belongs to the LIF/OSM family.</p> <p>SWISS: P15018</p> <p>Gene ID: 3976</p> <p>Database links: Entrez Gene: 3976Human Entrez Gene: 16878Mouse Omim: 159540Human SwissProt: P15018Human SwissProt: P09056Mouse Unigene: 2250Human Unigene: 4964Mouse</p> <p>Important Note:</p>

This product as supplied is intended for research use only, not for use in human, therapeutic or diagnostic applications.

Growth factors and hormones (Growth Factor and Hormones)

白血病抑制因子-LIF是一种具有多种生物功能的cell factor。它具有诱导白血病Cell differentiation, 调节骨组织的生长代谢, 维持胚胎Stem cells (Embryonic stem cells细胞)的基本特征、促进人类造血Stem cells的分化增殖、促进胆碱能神经元的分化、阻碍脂肪细胞合成、刺激成肌细胞生长、调节肝细胞中急性期反应蛋白的合成等生物学活性等作用。

Picture:



Sample:

Large intestine(mouse) Lysate at 40 ug

U87mg cell(human) Lysate at 30 ug

Primary: Anti- LIF (SL1058R) at 1/300 dilution

Secondary: IRDye800CW Goat Anti-Rabbit IgG at 1/20000 dilution

Predicted band size: 20kD

Observed band size: 30/50 kD

www.sunlongbiotech.com