



## Rabbit Anti-ADH1C antibody

SL10592R

<b>Product Name:</b>	ADH1C
<b>Chinese Name:</b>	乙醇脱氢酶1抗体
<b>Alias:</b>	ADH gamma subunit; ADH1C; ADH1G_HUMAN; Adh3; Alcohol dehydrogenase 1C (class I) gamma polypeptide; Alcohol dehydrogenase 1C; Alcohol dehydrogenase 1C gamma polypeptide; Alcohol dehydrogenase 3 (class I) gamma polypeptide; Alcohol dehydrogenase 3; Alcohol dehydrogenase subunit gamma; Aldehyde reductase; Class I alcohol dehydrogenase; OTTHUMP00000220209.
<b>Organism Species:</b>	Rabbit
<b>Clonality:</b>	Polyclonal
<b>React Species:</b>	Human,Cow,
<b>Applications:</b>	WB=1:500-2000ELISA=1:500-1000IHC-P=1:400-800IHC-F=1:400-800ICC=1:100-500IF=1:100-500 (Paraffin sections need antigen repair) not yet tested in other applications. optimal dilutions/concentrations should be determined by the end user.
<b>Molecular weight:</b>	41kDa
<b>Cellular localization:</b>	cytoplasmic
<b>Form:</b>	Lyophilized or Liquid
<b>Concentration:</b>	1mg/ml
<b>immunogen:</b>	KLH conjugated synthetic peptide derived from human ADH1C:281-375/375
<b>Lsotype:</b>	IgG
<b>Purification:</b>	affinity purified by Protein A
<b>Storage Buffer:</b>	0.01M TBS(pH7.4) with 1% BSA, 0.03% Proclin300 and 50% Glycerol.
<b>Storage:</b>	Store at -20 °C for one year. Avoid repeated freeze/thaw cycles. The lyophilized antibody is stable at room temperature for at least one month and for greater than a year when kept at -20°C. When reconstituted in sterile pH 7.4 0.01M PBS or diluent of antibody the antibody is stable for at least two weeks at 2-4 °C.
<b>PubMed:</b>	<a href="#">PubMed</a>
<b>Product Detail:</b>	This gene encodes class I alcohol dehydrogenase, gamma subunit, which is a member of the alcohol dehydrogenase family. Members of this enzyme family metabolize a wide variety of substrates, including ethanol, retinol, other aliphatic alcohols,

hydroxysteroids, and lipid peroxidation products. Class I alcohol dehydrogenase, consisting of several homo- and heterodimers of alpha, beta, and gamma subunits, exhibits high activity for ethanol oxidation and plays a major role in ethanol catabolism. Three genes encoding alpha, beta and gamma subunits are tandemly organized in a genomic segment as a gene cluster. [provided by RefSeq, Jul 2008]

**Subcellular Location:**

Cytoplasmic.

**Similarity:**

Belongs to the zinc-containing alcohol dehydrogenase family.

**SWISS:**

O97959

**Gene ID:**

126

**Database links:**

[Entrez Gene: 126](#)Human

[Entrez Gene: 11522](#)Mouse

[Omim: 103730](#)Human

[SwissProt: O97959](#)Baboon

[SwissProt: P00326](#)Human

[SwissProt: P00329](#)Mouse

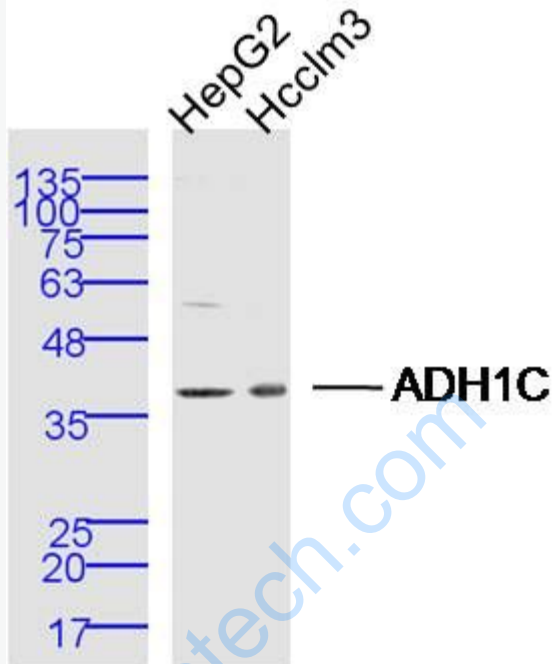
[Unigene: 654537](#)Human

[Unigene: 2409](#)Mouse

**Important Note:**

This product as supplied is intended for research use only, not for use in human, therapeutic or diagnostic applications.

Picture:



Sample:

HepG2 Cell (Human) Lysate at 40 ug

Hcclm3 Cell (Human) Lysate at 40 ug

Primary: Anti- ADH1C (SL10592R) at 1/300 dilution

Secondary: IRDye800CW Goat Anti-Rabbit IgG at 1/20000 dilution

Predicted band size: 41 kD

Observed band size: 41 kD