



Rabbit Anti-Dopamine Receptor D1 antibody

SL10610R

Product Name:	Dopamine Receptor D1
Chinese Name:	多巴胺受体D1抗体
Alias:	DRD1; dopamine D1 receptor; D(1A) dopamine receptor; D1A dopamine receptor; Dopamine D1Receptors; D1DR; DADR; Dopamine Receptor D1; DR D1; DR D1A; DRD 1; DRD1 receptor; DRD1; DRD1A; DRD1_HUMAN; D(1A) dopamine receptor; DRD 1A; DRD1.
Organism Species:	Rabbit
Clonality:	Polyclonal
React Species:	Human,Rat,
Applications:	WB=1:500-2000ELISA=1:500-1000IHC-P=1:400-800IHC-F=1:400-800Flow-Cyt=1µg/TestICC=1:100-500IF=1:100-500 (Paraffin sections need antigen repair) not yet tested in other applications. optimal dilutions/concentrations should be determined by the end user.
Molecular weight:	50kDa
Cellular localization:	cytoplasmicThe cell membrane
Form:	Lyophilized or Liquid
Concentration:	1mg/ml
immunogen:	KLH conjugated synthetic peptide derived from human Dopamine Receptor D1:11-100/446<Extracellular>
Lsotype:	IgG
Purification:	affinity purified by Protein A
Storage Buffer:	0.01M TBS(pH7.4) with 1% BSA, 0.03% Proclin300 and 50% Glycerol.
Storage:	Store at -20 °C for one year. Avoid repeated freeze/thaw cycles. The lyophilized antibody is stable at room temperature for at least one month and for greater than a year when kept at -20°C. When reconstituted in sterile pH 7.4 0.01M PBS or diluent of antibody the antibody is stable for at least two weeks at 2-4 °C.
PubMed:	PubMed
Product Detail:	This gene encodes the D1 subtype of the dopamine receptor. The D1 subtype is the most abundant dopamine receptor in the central nervous system. This G-protein coupled receptor stimulates adenylyl cyclase and activates cyclic AMP-dependent protein

kinases. D1 receptors regulate neuronal growth and development, mediate some behavioral responses, and modulate dopamine receptor D2-mediated events. Alternate transcription initiation sites result in two transcript variants of this gene. [provided by RefSeq, Jul 2008]

Function:

Dopamine receptor whose activity is mediated by G proteins which activate adenylyl cyclase.

Subunit:

Interacts with DNAJC14 via its C-terminus. Interacts with DRD1IP.

Subcellular Location:

Cell membrane; Multi-pass membrane protein. Endoplasmic reticulum membrane; Multi-pass membrane protein.

Tissue Specificity:

Detected in caudate, nucleus accumbens and in the olfactory tubercle.

Similarity:

Belongs to the G-protein coupled receptor 1 family.

SWISS:

P21728

Gene ID:

1812

Database links:

[Entrez Gene: 1812](#) Human

[Entrez Gene: 13488](#) Mouse

[Entrez Gene: 24316](#) Rat

[Omim: 126449](#) Human

[SwissProt: P21728](#) Human

[SwissProt: Q61616](#) Mouse

[SwissProt: P18901](#) Rat

[Unigene: 2624](#) Human

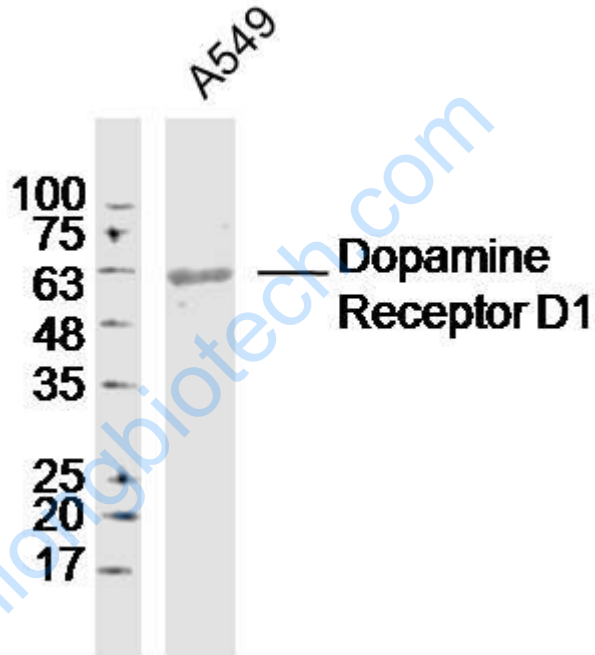
[Unigene: 54161](#) Mouse

[Unigene: 24039](#) Rat

Important Note:

This product as supplied is intended for research use only, not for use in human, therapeutic or diagnostic applications.

Picture:



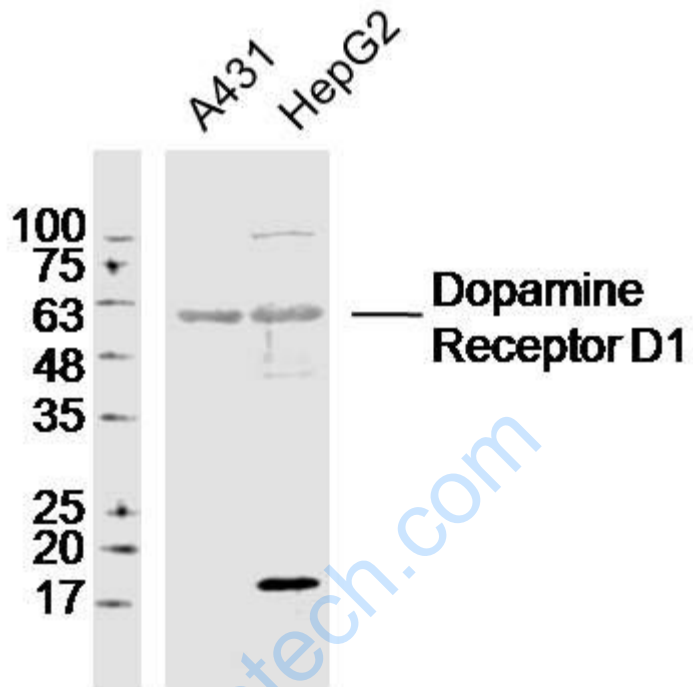
Sample: A549 Cell (Human) Lysate at 40 ug

Primary: Anti-Dopamine Receptor D1 (SL10610R) at 1/300 dilution

Secondary: IRDye800CW Goat Anti-Rabbit IgG at 1/20000 dilution

Predicted band size: 50 kD

Observed band size: 60 kD



Sample:

A431 Cell(Human)Lysate at 40 ug

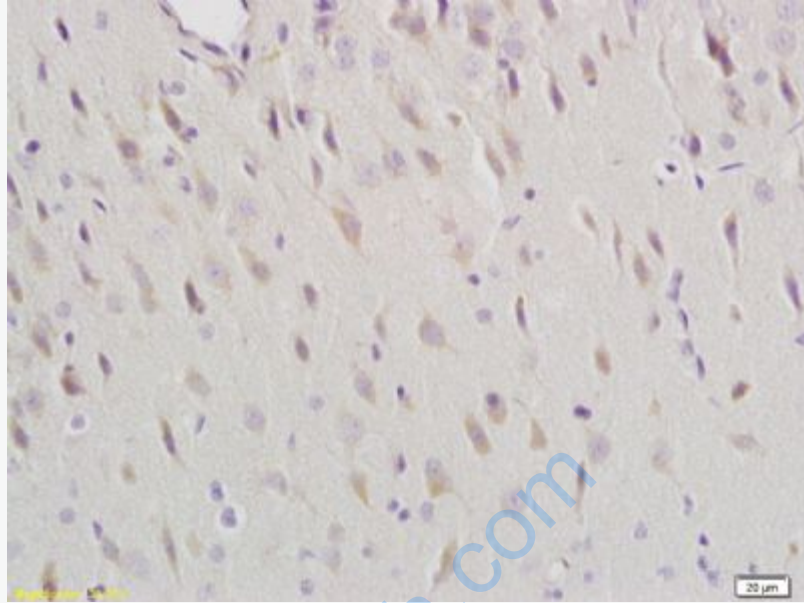
HepG2 Cell (Human) Lysate at 40 ug

Primary: Anti-Dopamine Receptor D1(SL10610R)at 1/300 dilution

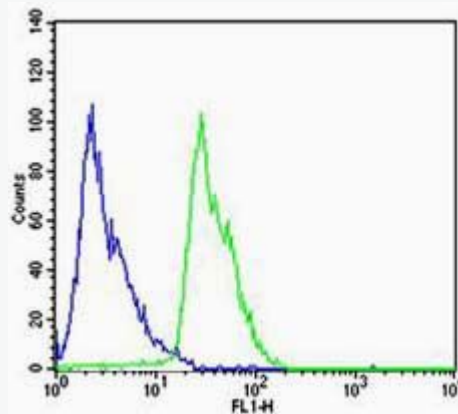
Secondary: IRDye800CW Goat Anti-Rabbit IgG at 1/20000 dilution

Predicted band size: 50kD

Observed band size: 60kD



Tissue/cell: rat brain tissue; 4% Paraformaldehyde-fixed and paraffin-embedded;
Antigen retrieval: citrate buffer (0.01M, pH 6.0), Boiling bathing for 15min; Block endogenous peroxidase by 3% Hydrogen peroxide for 30min; Blocking buffer (normal goat serum,C-0005) at 37°C for 20 min;
Incubation: Anti-Dopamine Receptor D1 Polyclonal Antibody,
Unconjugated(SL10610R) 1:200, overnight at 4°C, followed by conjugation to the secondary antibody(SP-0023) and DAB(C-0010) staining



Cell: SH-SY5Y

Concentration: 1:100

Host/Isotype: Rabbit/IgG

Flow cytometric analysis of Rabbit IgG isotype control (Cat#: bs-10610R) on SH-SY5Y (green) compared with control in the absence of primary antibody (blue) followed by Alexa Fluor 488-conjugated goat anti-rabbit IgG(H+L) secondary antibody .

www.sunlongbiotech.com