



Rabbit Anti-Dopamine Receptor D1 antibody

SL10612R

Product Name:	Dopamine Receptor D1
Chinese Name:	多巴胺受体D1抗体
Alias:	DRD1; dopamine D1 receptor; D(1A) dopamine receptor; D1A dopamine receptor; Dopamine D1Receptors; D1DR; DADR; Dopamine Receptor D1; DR D1; DR D1A; DRD 1; DRD1 receptor; DRD1; DRD1A; DRD1_HUMAN; D(1A) dopamine receptor; DRD 1A; DRD1.
Organism Species:	Rabbit
Clonality:	Polyclonal
React Species:	Mouse,Rat,
Applications:	WB=1:500-2000ELISA=1:500-1000IHC-P=1:400-800IHC-F=1:400-800Flow-Cyt=1µg/TestICC=1:100-500IF=1:100-500 (Paraffin sections need antigen repair) not yet tested in other applications. optimal dilutions/concentrations should be determined by the end user.
Molecular weight:	50kDa
Cellular localization:	cytoplasmicThe cell membrane
Form:	Lyophilized or Liquid
Concentration:	1mg/ml
immunogen:	KLH conjugated synthetic peptide derived from mouse Dopamine Receptor D1:101-200/446<Extracellular>
Lsotype:	IgG
Purification:	affinity purified by Protein A
Storage Buffer:	0.01M TBS(pH7.4) with 1% BSA, 0.03% Proclin300 and 50% Glycerol.
Storage:	Store at -20 °C for one year. Avoid repeated freeze/thaw cycles. The lyophilized antibody is stable at room temperature for at least one month and for greater than a year when kept at -20°C. When reconstituted in sterile pH 7.4 0.01M PBS or diluent of antibody the antibody is stable for at least two weeks at 2-4 °C.
PubMed:	PubMed
Product Detail:	This gene encodes the D1 subtype of the dopamine receptor. The D1 subtype is the most abundant dopamine receptor in the central nervous system. This G-protein coupled receptor stimulates adenylyl cyclase and activates cyclic AMP-dependent protein

kinases. D1 receptors regulate neuronal growth and development, mediate some behavioral responses, and modulate dopamine receptor D2-mediated events. Alternate transcription initiation sites result in two transcript variants of this gene. [provided by RefSeq, Jul 2008]

Function:

Dopamine receptor whose activity is mediated by G proteins which activate adenylyl cyclase.

Subunit:

Interacts with DNAJC14 via its C-terminus. Interacts with DRD1IP.

Subcellular Location:

Cell membrane; Multi-pass membrane protein. Endoplasmic reticulum membrane; Multi-pass membrane protein.

Tissue Specificity:

Detected in caudate, nucleus accumbens and in the olfactory tubercle.

Similarity:

Belongs to the G-protein coupled receptor 1 family.

SWISS:

Q61616

Gene ID:

13488

Database links:

[Entrez Gene: 1812](#) Human

[Entrez Gene: 13488](#) Mouse

[Entrez Gene: 24316](#) Rat

[Omim: 126449](#) Human

[SwissProt: P21728](#) Human

[SwissProt: Q61616](#) Mouse

[SwissProt: P18901](#) Rat

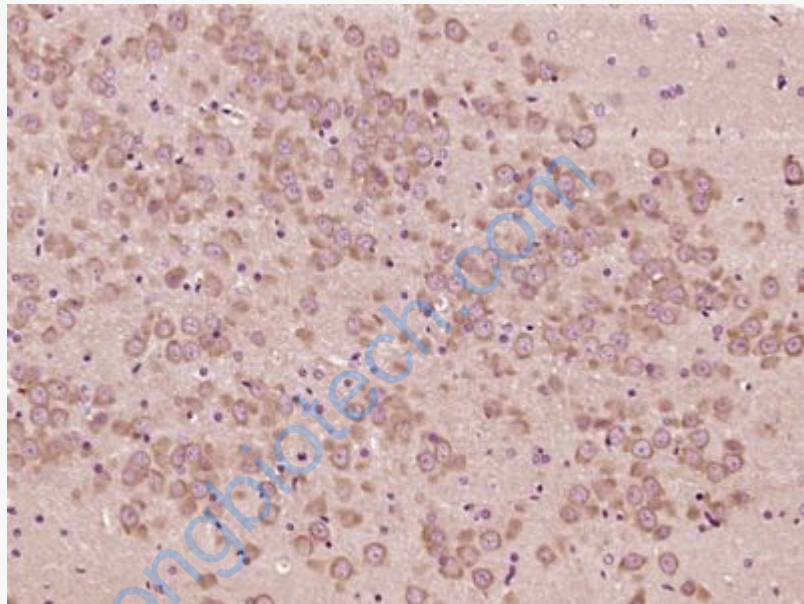
[Unigene: 2624](#) Human

[Unigene: 54161](#) Mouse

[Unigene: 24039](#) Rat

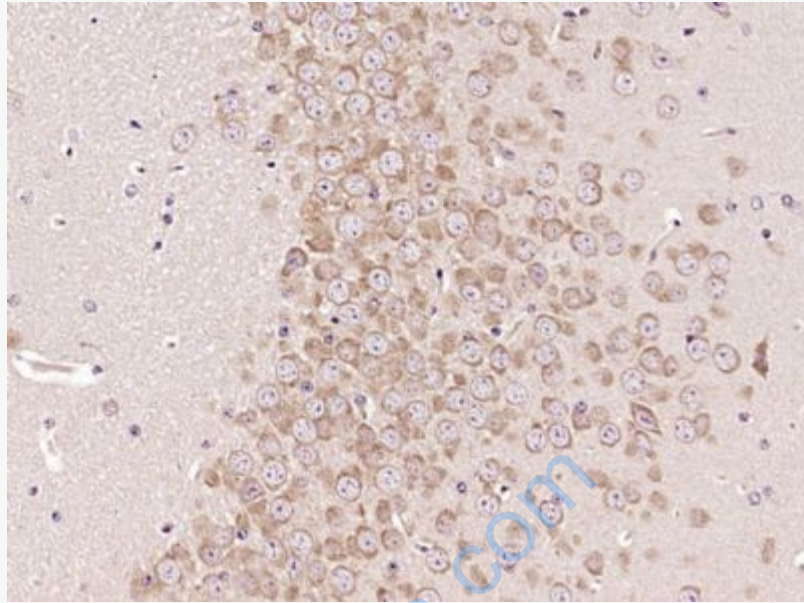
Important Note:

This product as supplied is intended for research use only, not for use in human, therapeutic or diagnostic applications.

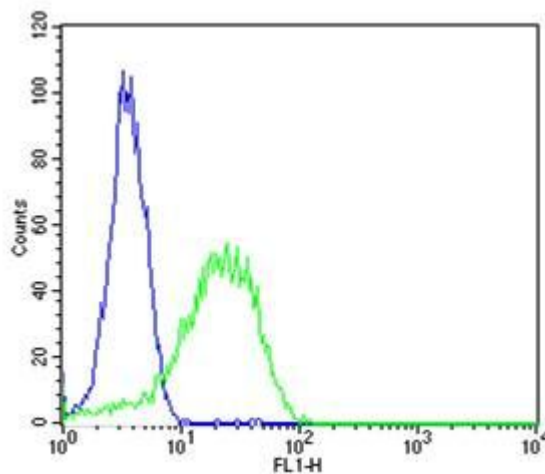


Picture:

Paraformaldehyde-fixed, paraffin embedded (Rat brain); Antigen retrieval by boiling in sodium citrate buffer (pH6.0) for 15min; Block endogenous peroxidase by 3% hydrogen peroxide for 20 minutes; Blocking buffer (normal goat serum) at 37°C for 30min; Antibody incubation with (Dopamine Receptor D1) Polyclonal Antibody, Unconjugated (SL10612R) at 1:400 overnight at 4°C, followed by operating according to SP Kit(Rabbit) (sp-0023) instructions and DAB staining.



Paraformaldehyde-fixed, paraffin embedded (Mouse brain); Antigen retrieval by boiling in sodium citrate buffer (pH6.0) for 15min; Block endogenous peroxidase by 3% hydrogen peroxide for 20 minutes; Blocking buffer (normal goat serum) at 37°C for 30min; Antibody incubation with (Dopamine Receptor D1) Polyclonal Antibody, Unconjugated (SL10612R) at 1:400 overnight at 4°C, followed by operating according to SP Kit(Rabbit) (sp-0023) instructions and DAB staining.



Cell: Neuro-2a

Concentration: 1:100

Host/Isotype: Rabbit/IgG

Flow cytometric analysis of Rabbit IgG isotype control (Cat#: bs-10612R) on Neuro-2a (green) compared with control in the absence of primary antibody (blue) followed by Alexa Fluor 488-conjugated goat anti-rabbit IgG(H+L) secondary antibody .

www.sunlongbiotech.com