



Rabbit Anti-Galectin-1 antibody

SL10629R

Product Name:	Galectin-1
Chinese Name:	半乳糖凝集素1抗体
Alias:	14 kDa laminin-binding protein; 14 kDa lectin; Beta galactoside binding lectin; Beta galactoside binding lectin L 14 I; beta galactoside binding protein; Beta-galactoside-binding lectin L-14-I; Gal 1; Gal-1; Galaptin; Galbp; Galectin; Galectin1; GBP; HBL; HLBP14; HPL; L 14.5; L-14.5; L14; Lactose binding lectin 1; Lactose-binding lectin 1; Lect14; Lectin galactoside binding soluble 1;Lectin galactoside-binding soluble 1; LEG1_HUMAN; LGALS 1; LGALS1; Lgals1 lectin galactose binding soluble 1; MAPK activating protein MP12; Putative MAPK activating protein MP12; Putative MAPK-activating protein PM12; S Lac lectin 1; S-Lac lectin 1.
Organism Species:	Rabbit
Clonality:	Polyclonal
React Species:	Human,Mouse,Rat,Pig,
Applications:	WB=1:500-2000ELISA=1:500-1000IHC-P=1:400-800IHC-F=1:400-800IF=1:100-500 (Paraffin sections need antigen repair) not yet tested in other applications. optimal dilutions/concentrations should be determined by the end user.
Molecular weight:	15kDa
Cellular localization:	Secretory protein
Form:	Lyophilized or Liquid
Concentration:	1mg/ml
immunogen:	KLH conjugated synthetic peptide derived from human Galectin-1:21-100/135
Lsotype:	IgG
Purification:	affinity purified by Protein A
Storage Buffer:	0.01M TBS(pH7.4) with 1% BSA, 0.03% Proclin300 and 50% Glycerol.
Storage:	Store at -20 °C for one year. Avoid repeated freeze/thaw cycles. The lyophilized antibody is stable at room temperature for at least one month and for greater than a year when kept at -20°C. When reconstituted in sterile pH 7.4 0.01M PBS or diluent of antibody the antibody is stable for at least two weeks at 2-4 °C.
PubMed:	PubMed

The galectins are a family of beta-galactoside-binding proteins implicated in modulating cell-cell and cell-matrix interactions. This gene product may act as an autocrine negative growth factor that regulates cell proliferation. [provided by RefSeq, Jul 2008].

Function:

May regulate apoptosis, cell proliferation and cell differentiation. Binds beta-galactoside and a wide array of complex carbohydrates. Inhibits CD45 protein phosphatase activity and therefore the dephosphorylation of Lyn kinase.

Subunit:

Homodimer. Binds LGALS3BP. Interacts with CD2, CD3, CD4, CD7, CD43 and CD45. Interacts with laminin (via poly-N-acetyllactosamine).

Subcellular Location:

Secreted, extracellular space, extracellular matrix.

Tissue Specificity:

Expressed in placenta, maternal decidua and fetal membranes. Within placenta, expressed in trophoblasts, stromal cells, villous endothelium, syncytiotrophoblast apical membrane and villous stroma. Within fetal membranes, expressed in amnion, chorioamniotic mesenchyma and chorion (at protein level). Expressed in cardiac, smooth, and skeletal muscle, neurons, thymus, kidney and hematopoietic cells.

Similarity:

Contains 1 galectin domain.

SWISS:

P09382

Gene ID:

3956

Database links:

[Entrez Gene: 3956](#)Human

[Entrez Gene: 16852](#)Mouse

[Entrez Gene: 56646](#)Rat

[Omim: 150570](#)Human

[SwissProt: P09382](#)Human

[SwissProt: P16045](#)Mouse

[SwissProt: P11762](#)Rat

[Unigene: 445351](#)Human

Product Detail:

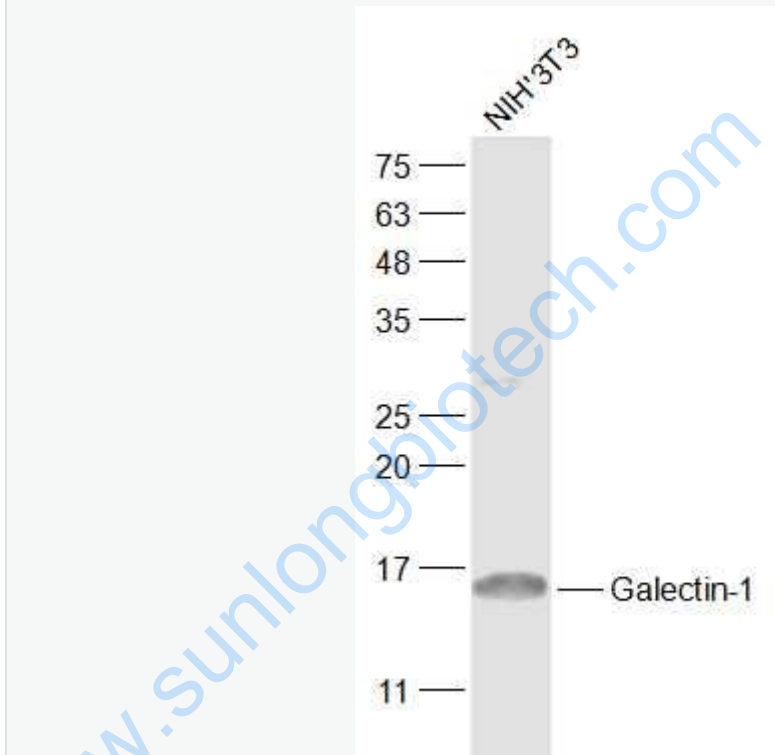
[Unigene: 43831](#)Mouse

[Unigene: 57](#)Rat

Important Note:

This product as supplied is intended for research use only, not for use in human, therapeutic or diagnostic applications.

Picture:



Sample:

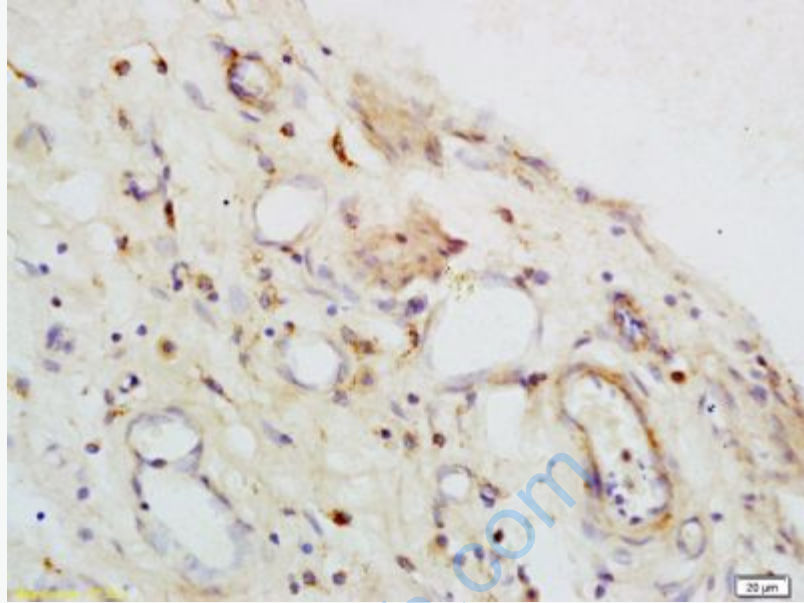
NIH/3T3(Mouse) Cell Lysate at 30 ug

Primary: Anti-Galectin-1 (SL10629R) at 1/500 dilution

Secondary: IRDye800CW Goat Anti-Rabbit IgG at 1/20000 dilution

Predicted band size: 15 kD

Observed band size: 15 kD



Antigen r Tissue/cell: human gastric carcinoma; 4% Paraformaldehyde-fixed and paraffin-embedded;

etrieval: citrate buffer (0.01M, pH 6.0), Boiling bathing for 15min; Block endogenous peroxidase by 3% Hydrogen peroxide for 30min; Blocking buffer (normal goat serum,C-0005) at 37°C for 20 min;

Incubation: Anti-Galectin-1 Polyclonal Antibody, Unconjugated(SL10629R) 1:200, overnight at 4°C, followed by conjugation to the secondary antibody(SP-0023) and DAB(C-0010) staining