



Rabbit Anti-KLF4 antibody

SL1064R

Product Name:	KLF4
Chinese Name:	肠道内富含的Kruppel样因子/上皮Zinc finger protein4抗体
Alias:	Endothelial Kruppel like zinc finger protein; EZF; GKLF; KLF; Kruppel like factor 4 (Epithelial zinc finger protein EZF) (Gut enriched Krueppel like factor); Kruppel like factor 4 (gut); Krueppel-like factor 4;EZF;GKLF;KLF 4;KLF-4;Krueppel like factor 4; KLF4 HUMAN.
文献引用 PubMed :	<p>Specific References(3)SL1064R has been referenced in 3 publications.</p> <p>[IF=15.20]Lovren, Fina, et al. "MicroRNA-145 Targeted Therapy Reduces Atherosclerosis." Circulation 126.11 suppl 1 (2012): S81-S90.WB;Mouse. PubMed:22965997</p> <p>[IF=2.76]Verma, Subodh, et al. "Pedicled no-touch saphenous vein graft harvest limits vascular smooth muscle cell activation: the PATENT saphenous vein graft study." European Journal of Cardio-Thoracic Surgery (2013): ezt560.IHC-P;Human. PubMed:24327455</p> <p>[IF=3.20]El-Sayed, Ahmed Kamel, et al. "Pluripotent state induction in mouse embryonic fibroblast using mRNAs of reprogramming factors." International journal of molecular sciences 15.12 (2014): 21840-21864.IF(ICC);Mouse. PubMed:25437916</p>
Organism Species:	Rabbit
Clonality:	Polyclonal
React Species:	Human,Mouse,Rat,Chicken,Pig,Cow,Horse,Sheep,Guinea Pig,
Applications:	WB=1:500-2000ELISA=1:500-1000IHC-P=1:400-800IHC-F=1:400-800Flow-Cyt=1µg/TestIF=1:100-500 (Paraffin sections need antigen repair) not yet tested in other applications.

	optimal dilutions/concentrations should be determined by the end user.
Molecular weight:	56kDa
Cellular localization:	The nucleus
Form:	Lyophilized or Liquid
Concentration:	1mg/ml
immunogen:	KLH conjugated synthetic peptide derived from human KLF4:415-513/513
Lsotype:	IgG
Purification:	affinity purified by Protein A
Storage Buffer:	0.01M TBS(pH7.4) with 1% BSA, 0.03% Proclin300 and 50% Glycerol.
Storage:	Store at -20 °C for one year. Avoid repeated freeze/thaw cycles. The lyophilized antibody is stable at room temperature for at least one month and for greater than a year when kept at -20°C. When reconstituted in sterile pH 7.4 0.01M PBS or diluent of antibody the antibody is stable for at least two weeks at 2-4 °C.
PubMed:	PubMed
Product Detail:	<p>KLF4 is a transcription factor that works with Sp1 to activate the Laminin gamma1 chain gene. It binds the CACCC core sequence. KLF4 may be involved in the differentiation of epithelial cells and may also function in the development of the skeleton and kidney. KLF4 also has roles as both an oncogene and a tumor suppressor.</p> <p>Function: Transcription factor; can act both as activator and as repressor. Binds the 5'-CACCC-3' core sequence. Binds to the promoter region of its own gene and can activate its own transcription. Regulates the expression of key transcription factors during embryonic development. Plays an important role in maintaining embryonic stem cells, and in preventing their differentiation. Required for establishing the barrier function of the skin and for postnatal maturation and maintenance of the ocular surface. Involved in the differentiation of epithelial cells and may also function in skeletal and kidney development. Contributes to the down-regulation of p53/TP53 transcription.</p> <p>Subunit: Interacts with POU5F1/OCT4 and SOX2. Interacts with MUC1 (via the C-terminal domain).</p> <p>Subcellular Location: Nucleus.</p> <p>Post-translational modifications: Ubiquitinated. Polyubiquitination involves WWP1 and leads to proteasomal degradation of this protein.</p> <p>Similarity: Belongs to the krueppel C2H2-type zinc-finger protein family. Contains 3 C2H2-type zinc fingers.</p> <p>SWISS: O43474</p>

Gene ID:
9314

Database links:

[Entrez Gene: 9314](#)Human

[Entrez Gene: 16600](#)Mouse

[Omim: 602253](#)Human

[SwissProt: O43474](#)Human

[SwissProt: Q60793](#)Mouse

[Unigene: 376206](#)Human

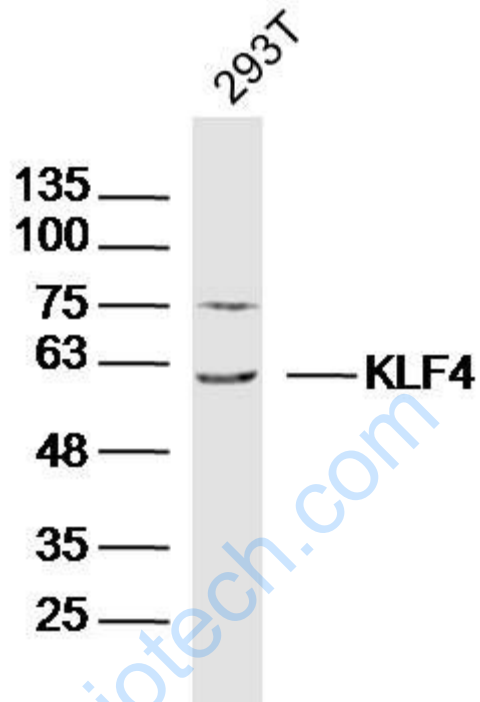
[Unigene: 4325](#)Mouse

Important Note:

This product as supplied is intended for research use only, not for use in human, therapeutic or diagnostic applications.

Klf4(原称GKLF)调节体外细胞的增生与分化, 有学者认为:KLF4可能参与消化系统Tumour的发生及发展过程, 多表达与结肠。又称:上皮锌指转录因子(上皮Zinc finger protein)Surface skin layer zinc finger protein。

Picture:



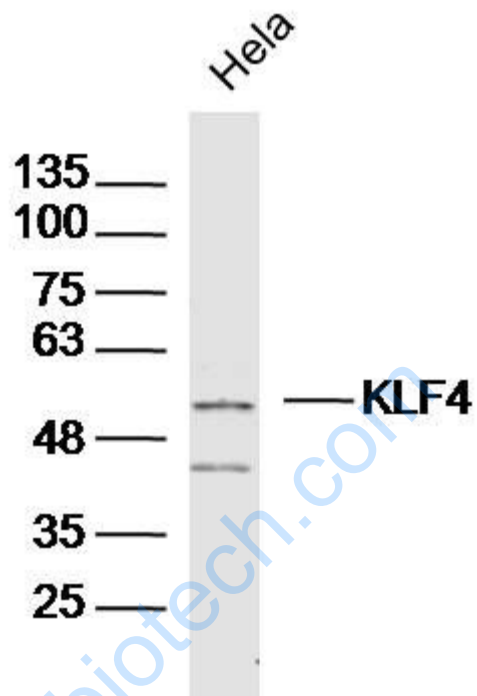
Sample: 293T (human) Cell Lysate at 40 ug

Primary: Anti- KLF4 (SL1064R) at 1/300 dilution

Secondary: IRDye800CW Goat Anti-Rabbit IgG at 1/20000 dilution

Predicted band size: 56 kD

Observed band size: 60 kD



Sample:

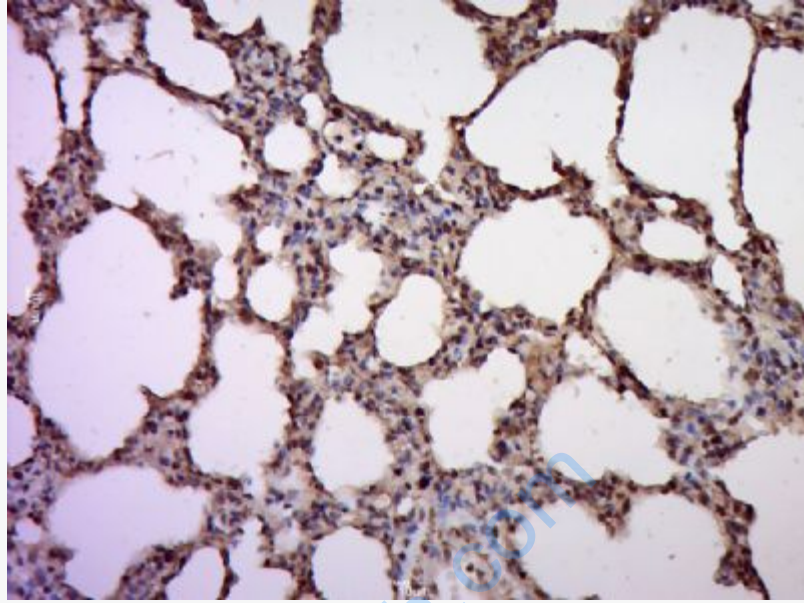
Hela Cell(Human)Lysate at 30 ug

Primary: Anti- KLF4 (SL1064R)at 1/300 dilution

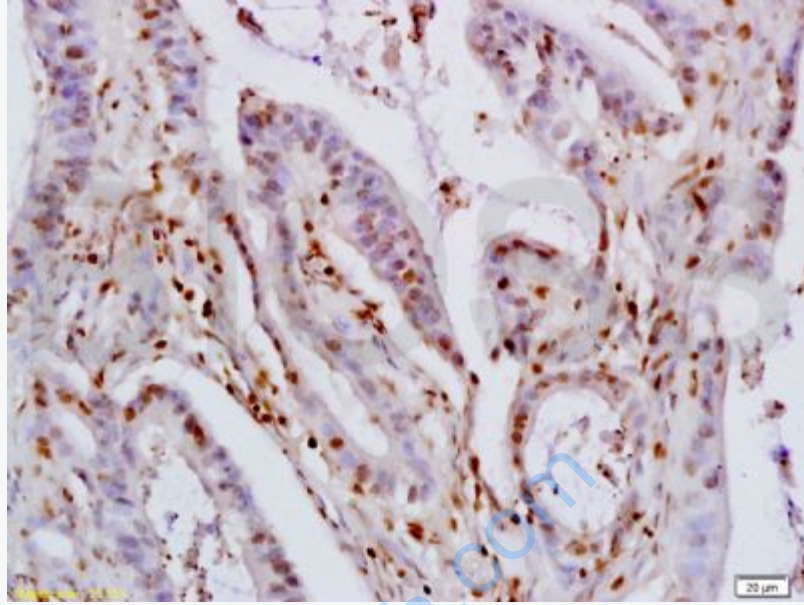
Secondary: IRDye800CW Goat Anti-Rabbit IgG at 1/20000 dilution

Predicted band size: 56kD

Observed band size: 56kD



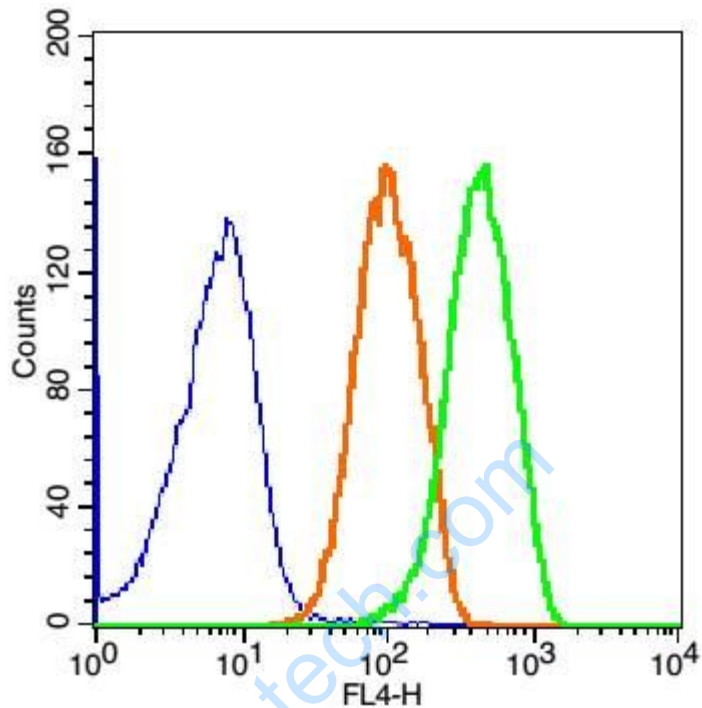
Paraformaldehyde-fixed, paraffin embedded (Rat lung); Antigen retrieval by boiling in sodium citrate buffer (pH6.0) for 15min; Block endogenous peroxidase by 3% hydrogen peroxide for 20 minutes; Blocking buffer (normal goat serum) at 37°C for 30min; Antibody incubation with (KLF4) Polyclonal Antibody, Unconjugated (SL1064R) at 1:400 overnight at 4°C, followed by a conjugated secondary (sp-0023) for 20 minutes and DAB staining.



Tissue/cell: human colon carcinoma; 4% Paraformaldehyde-fixed and paraffin-embedded;

Antigen retrieval: citrate buffer (0.01M, pH 6.0), Boiling bathing for 15min; Block endogenous peroxidase by 3% Hydrogen peroxide for 30min; Blocking buffer (normal goat serum,C-0005) at 37°C for 20 min;

Incubation: Anti-KLF4 Polyclonal Antibody, Unconjugated(SL1064R) 1:200, overnight at 4°C, followed by conjugation to the secondary antibody(SP-0023) and DAB(C-0010) staining



Blank control: MCF7(blue).

Primary Antibody: Rabbit Anti-KLF4 AF647 Conjugated antibody (SL1064R),

Dilution: 1µg in 100 µL 1X PBS containing 0.5% BSA;

Isotype Control Antibody: Rabbit IgG/AF647(orange) ,used under the same conditions.

Protocol

The cells were fixed with 2% paraformaldehyde (10 min) and then permeabilized with ice-cold 90% methanol for 30 min on ice. The cells were washed twice with 1 X PBS. The cells were incubated in 1 X PBS containing 0.5% BSA + 1 0% goat serum (15 min) to block non-specific protein-protein interactions followed by the incubated with antibody (SL1064R) for 30 min on ice. Acquisition of 20,000 events

	was performed.
--	----------------

www.sunlongbiotech.com