



## Rabbit Anti-CD7 antibody

SL10674R

<b>Product Name:</b>	CD7
<b>Chinese Name:</b>	CD7抗体
<b>Alias:</b>	CD7; CD7 antigen (p41); CD7 molecule; CD7_HUMAN; T-cell antigen CD7; T-cell leukemia antigen; T-cell surface antigen Leu-9; CD 7; CD7 antigen; CD7 antigen p41; CD7 molecule; GP 40; GP40; LEU 9; LEU9; p41; p41 protein; T cell antigen CD7; T cell antigen CD7 precursor; T cell leukemia antigen; Tp 40; TP 41; Tp40; TP41.
<b>Organism Species:</b>	Rabbit
<b>Clonality:</b>	Polyclonal
<b>React Species:</b>	Human,Mouse,
<b>Applications:</b>	IHC-F=1:400-800Flow-Cyt=0.2ug/testICC=1:100-500IF=1:100-500 (Paraffin sections need antigen repair) not yet tested in other applications. optimal dilutions/concentrations should be determined by the end user.
<b>Molecular weight:</b>	24kDa
<b>Cellular localization:</b>	The cell membrane
<b>Form:</b>	Lyophilized or Liquid
<b>Concentration:</b>	1mg/ml
<b>immunogen:</b>	KLH conjugated synthetic peptide derived from human CD7:31-100/240<Extracellular>
<b>Lsotype:</b>	IgG
<b>Purification:</b>	affinity purified by Protein A
<b>Storage Buffer:</b>	0.01M TBS(pH7.4) with 1% BSA, 0.03% Proclin300 and 50% Glycerol.
<b>Storage:</b>	Store at -20 °C for one year. Avoid repeated freeze/thaw cycles. The lyophilized antibody is stable at room temperature for at least one month and for greater than a year when kept at -20°C. When reconstituted in sterile pH 7.4 0.01M PBS or diluent of antibody the antibody is stable for at least two weeks at 2-4 °C.
<b>PubMed:</b>	<a href="#">PubMed</a>
<b>Product Detail:</b>	This gene encodes a transmembrane protein which is a member of the immunoglobulin superfamily. This protein is found on thymocytes and mature T cells. It plays an essential role in T-cell interactions and also in T-cell/B-cell interaction during early lymphoid development. [provided by RefSeq, Jul 2008]

**Function:**

CD7 (CD7 Molecule) is a Protein Coding gene. Diseases associated with CD7 include Pityriasis Lichenoides Et Varioliformis Acuta and T-Cell Leukemia. Among its related pathways are Innate Lymphoid Cell Differentiation Pathways and Hematopoietic cell lineage. GO annotations related to this gene include receptor activity.

**Subunit:**

Interacts with SECTM1.

**Subcellular Location:**

Membrane; Single-pass type I membrane protein.

**Similarity:**

Contains 1 Ig-like (immunoglobulin-like) domain.

**SWISS:**

P09564

**Gene ID:**

924

**Database links:**

[Entrez Gene: 924](#)Human

[Entrez Gene: 12516](#)Mouse

[Omir: 186820](#)Human

[SwissProt: P09564](#)Human

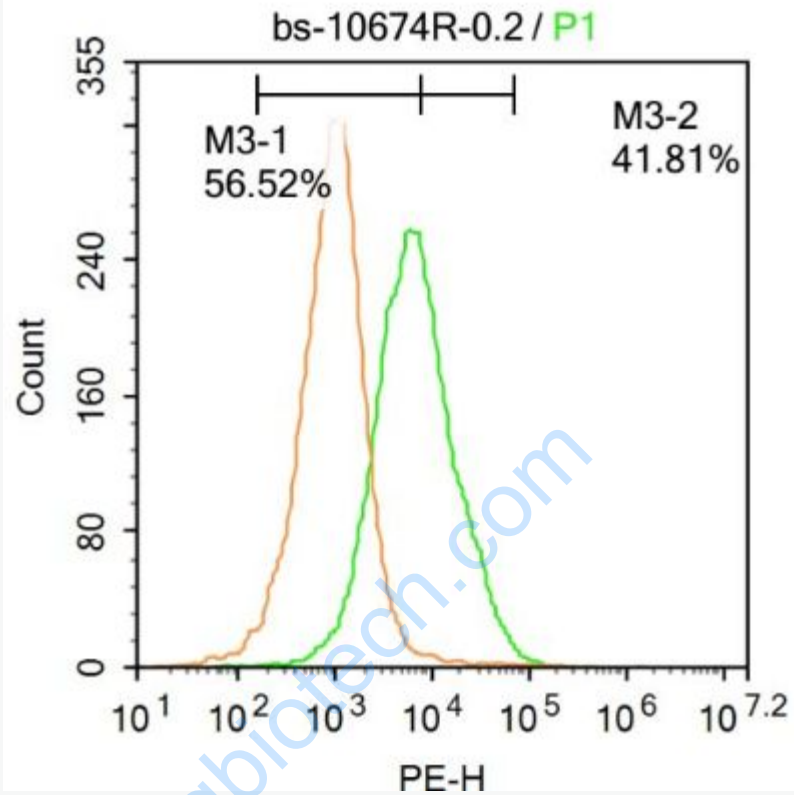
[SwissProt: P50283](#)Mouse

[Unigene: 36972](#)Human

[Unigene: 4100](#)Mouse

**Important Note:**

This product as supplied is intended for research use only, not for use in human, therapeutic or diagnostic applications.



**Picture:**

Blank control: Mouse spleen cells.

Primary Antibody (green line): Rabbit Anti-CD7 antibody (SL10674R)

Dilution:  $1\mu\text{g} / 10^6$  cells;

Isotype Control Antibody (orange line): Rabbit IgG .

Secondary Antibody : Goat anti-rabbit IgG-AF647

Dilution:  $1\mu\text{g} / \text{test}$ .

**Protocol**

The cells were then incubated in 5%BSA to block non-specific protein-protein interactions for 30 min at room temperature .Cells stained with Primary Antibody for 30 min at room temperature. The secondary antibody used for 40 min at room temperature. Acquisition of 20,000 events was performed.

