



Rabbit Anti-SOCS6 antibody

SL10685R

Product Name:	SOCS6
Chinese Name:	cell factor信号传导抑制蛋白6抗体
Alias:	CIS-4; CIS4; Cish4; Cytokine inducible SH2 protein 4; Cytokine-inducible SH2 protein 4; HSPC060; SOCS-4; SOCS-6; SOCS4; Socs6; SOCS6_HUMAN; SSI4; STAI4; STAT induced STAT inhibitor 4; STAT4; STATI4; Suppressor of cytokine signaling 4; Suppressor of cytokine signaling 6.
Organism Species:	Rabbit
Clonality:	Polyclonal
React Species:	Human,Mouse,Rat,Chicken,Dog,Pig,Cow,Horse,Rabbit,Sheep,
Applications:	WB=1:500-2000ELISA=1:500-1000IHC-P=1:400-800IHC-F=1:400-800ICC=1:100-500IF=1:100-500 (Paraffin sections need antigen repair) not yet tested in other applications. optimal dilutions/concentrations should be determined by the end user.
Molecular weight:	59kDa
Cellular localization:	cytoplasmicThe cell membrane
Form:	Lyophilized or Liquid
Concentration:	1mg/ml
immunogen:	KLH conjugated synthetic peptide derived from human SOCS6:21-120/535
Lsotype:	IgG
Purification:	affinity purified by Protein A
Storage Buffer:	0.01M TBS(pH7.4) with 1% BSA, 0.03% Proclin300 and 50% Glycerol.
Storage:	Store at -20 °C for one year. Avoid repeated freeze/thaw cycles. The lyophilized antibody is stable at room temperature for at least one month and for greater than a year when kept at -20°C. When reconstituted in sterile pH 7.4 0.01M PBS or diluent of antibody the antibody is stable for at least two weeks at 2-4 °C.
PubMed:	PubMed
Product Detail:	The protein encoded by this gene contains a SH2 domain and a CIS homolog domain. The protein thus belongs to the cytokine-induced STAT inhibitor (CIS), also known as suppressor of cytokine signaling (SOCS) or STAT-induced STAT inhibitor (SSI), protein family. CIS family members are known to be cytokine-inducible negative

regulators of cytokine signaling. The expression of this gene can be induced by GM-CSF and EPO in hematopoietic cells. A high expression level of this gene was found in factor-independent chronic myelogenous leukemia (CML) and erythroleukemia (HEL) cell lines. [provided by RefSeq, Jul 2008].

Function:

SOCS family proteins form part of a classical negative feedback system that regulates cytokine signal transduction. May be a substrate recognition component of a SCF-like ECS (Elongin BC-CUL2/5-SOCS-box protein) E3 ubiquitin-protein ligase complex which mediates the ubiquitination and subsequent proteasomal degradation of target proteins. Regulates KIT degradation by ubiquitination of the tyrosine-phosphorylated receptor.

Subunit:

Interacts with RBCK1. Interacts with phosphorylated IRS4. Interacts with PIM3. Interacts with KIT (phosphorylated).

Similarity:

Contains 1 SH2 domain.
Contains 1 SOCS box domain.

SWISS:

O14544

Gene ID:

9306

Database links:

[Entrez Gene: 9306](#)Human

[Entrez Gene: 54607](#)Mouse

[Oimim: 605118](#)Human

[SwissProt: O14544](#)Human

[SwissProt: Q9JLY0](#)Mouse

[Unigene: 44439](#)Human

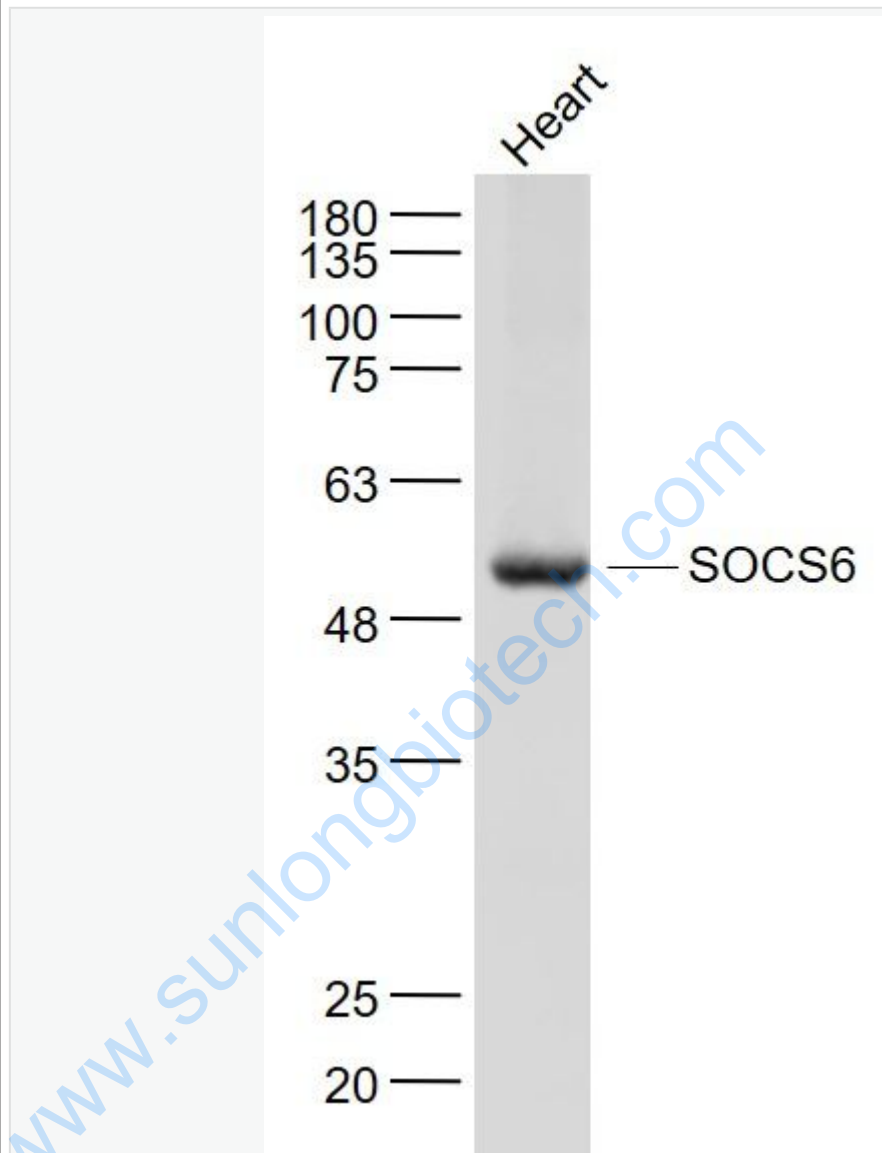
[Unigene: 476577](#)Mouse

[Unigene: 91920](#)Mouse

Important Note:

This product as supplied is intended for research use only, not for use in human, therapeutic or diagnostic applications.

Picture:



Sample:

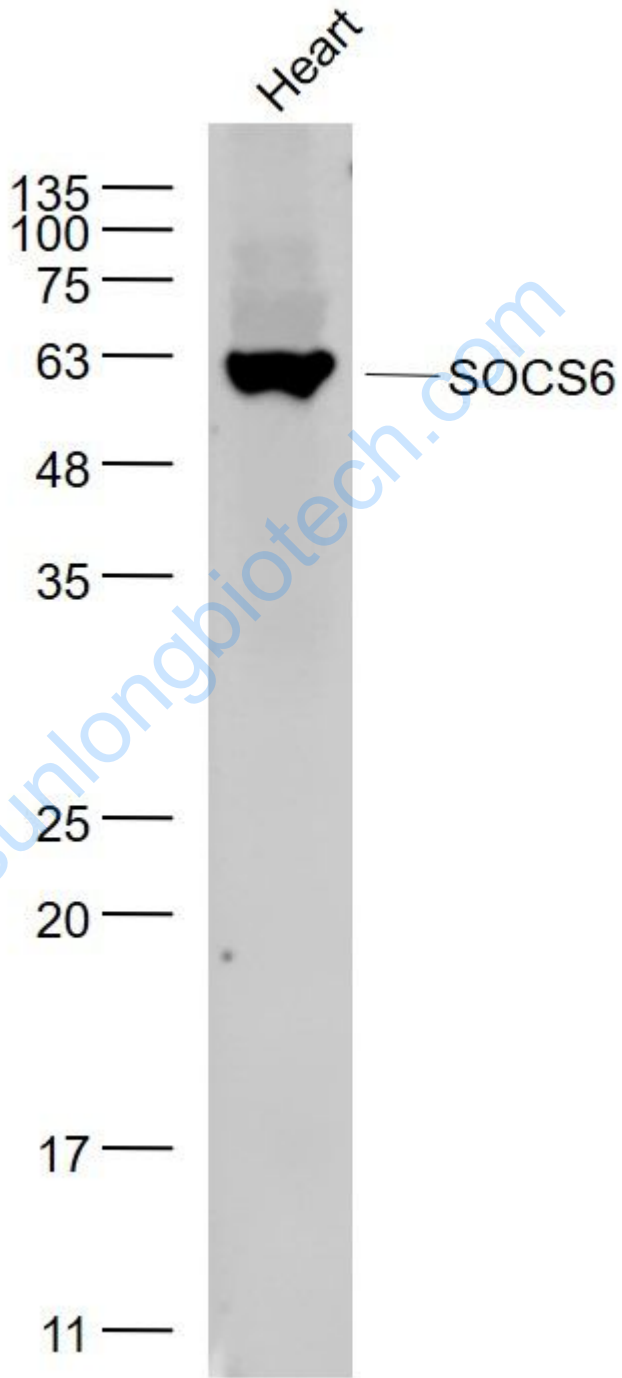
Heart (Mouse) Lysate at 40 ug

Primary: Anti- SOCS6 (SL10685R) at 1/1000 dilution

Secondary: IRDye800CW Goat Anti-Rabbit IgG at 1/20000 dilution

Predicted band size: 59 kD

Observed band size: 57 kD



Sample:

Heart (Mouse) Lysate at 40 ug

Primary: Anti- SOCS6 (SL10685R) at 1/1000 dilution

Secondary: IRDye800CW Goat Anti-Rabbit IgG at 1/20000 dilution

Predicted band size: 59 kD

Observed band size: 60 kD

www.sunlongbiotech.com