



Rabbit Anti-BMP2 antibody

SL10696R

Product Name:	BMP2
Chinese Name:	骨形态发生蛋白2抗体
Alias:	bone morphogenetic protein 2; BMP 2; BMP 2A; BMP2; BMP2A; BMP-2; BMP2_HUMAN.
Organism Species:	Rabbit
Clonality:	Polyclonal
React Species:	Human,Mouse,Rat,Chicken,Dog,Pig,Cow,Horse,Guinea Pig,
Applications:	WB=1:500-2000ELISA=1:500-1000IHC-P=1:400-800IHC-F=1:400-800ICC=1:100-500IF=1:100-500 (Paraffin sections need antigen repair) not yet tested in other applications. optimal dilutions/concentrations should be determined by the end user.
Molecular weight:	13/44kDa
Cellular localization:	Secretory protein
Form:	Lyophilized or Liquid
Concentration:	1mg/ml
immunogen:	KLH conjugated synthetic peptide derived from human BMP2:341-396/396
Lsotype:	IgG
Purification:	affinity purified by Protein A
Storage Buffer:	0.01M TBS(pH7.4) with 1% BSA, 0.03% Proclin300 and 50% Glycerol.
Storage:	Store at -20 °C for one year. Avoid repeated freeze/thaw cycles. The lyophilized antibody is stable at room temperature for at least one month and for greater than a year when kept at -20°C. When reconstituted in sterile pH 7.4 0.01M PBS or diluent of antibody the antibody is stable for at least two weeks at 2-4 °C.
PubMed:	PubMed
Product Detail:	BMP2 belongs to the transforming growth factor-beta (TGFB) superfamily of secreted growth factors. It is a disulfide-linked homodimer and induces bone and cartilage formation. In addition to its osteogenic activity, BMP2 plays an important role in cardiac morphogenesis and is expressed in a variety of tissues including lung, spleen, brain, liver, prostate ovary and small intestine. The functional form of BMP2 is a 26 kDa protein composed of two identical 114 amino acid polypeptide chains linked by a single

disulfide bond. BMPs control fundamental events in early embryonic development, organogenesis and adult tissue homeostasis.

Function:

Induces cartilage and bone formation.

Subunit:

Homodimer; disulfide-linked. Interacts with SOSTDC1. Interacts with GREM2, RGMA, RGMB and RGMC. Interacts with ASPN.

Subcellular Location:

Secreted.

Tissue Specificity:

Particularly abundant in lung, spleen and colon and in low but significant levels in heart, brain, placenta, liver, skeletal muscle, kidney, pancreas, prostate, ovary and small intestine.

Similarity:

Belongs to the TGF-beta family.

SWISS:

P12643

Gene ID:

650

Database links:

[Entrez Gene: 650](#)Human

[Entrez Gene: 12156](#)Mouse

[Entrez Gene: 29373](#)Rat

[Oimim: 112261](#)Human

[SwissProt: P12643](#)Human

[SwissProt: P21274](#)Mouse

[SwissProt: P49001](#)Rat

[Unigene: 73853](#)Human

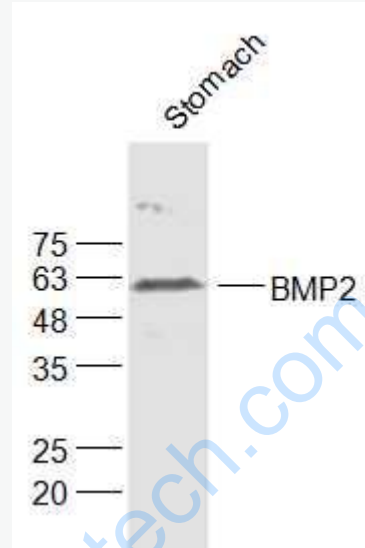
[Unigene: 103205](#)Mouse

[Unigene: 90931](#)Rat

Important Note:

This product as supplied is intended for research use only, not for use in human, therapeutic or diagnostic applications.

Picture:



Sample:

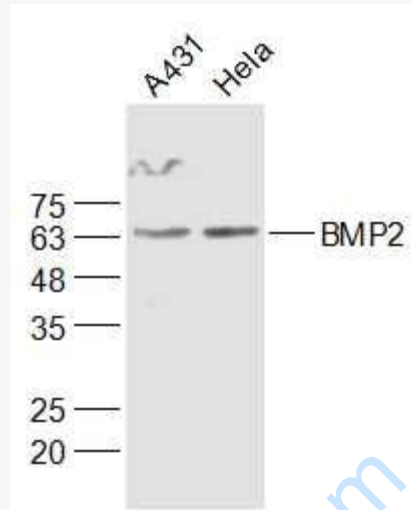
Stomach (Mouse) Lysate at 40 ug

Primary: Anti-BMP2 (SL10696R) at 1/300 dilution

Secondary: IRDye800CW Goat Anti-Rabbit IgG at 1/20000 dilution

Predicted band size: 13/44 kD

Observed band size: 59 kD



Sample:

A431(Human) Cell Lysate at 30 ug

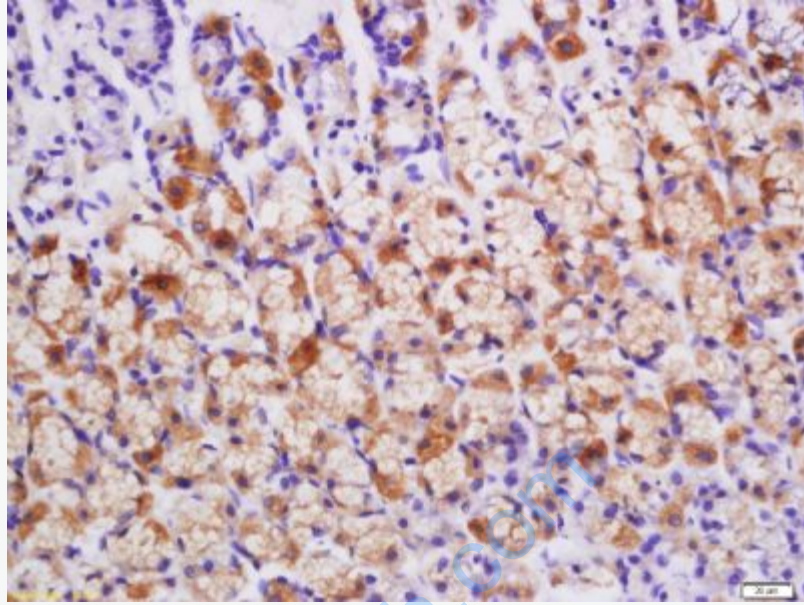
HeLa(Human) Cell Lysate at 30 ug

Primary: Anti-BMP2 (SL10696R) at 1/300 dilution

Secondary: IRDye800CW Goat Anti-Rabbit IgG at 1/20000 dilution

Predicted band size: 13/44 kD

Observed band size: 64 kD



Tissue/cell: rat stomach tissue; 4% Paraformaldehyde-fixed and paraffin-embedded;
Antigen retrieval: citrate buffer (0.01M, pH 6.0), Boiling bathing for 15min; Block endogenous peroxidase by 3% Hydrogen peroxide for 30min; Blocking buffer (normal goat serum,C-0005) at 37°C for 20 min;
Incubation: Anti-BMP2 Polyclonal Antibody, Unconjugated(SL10696R) 1:200, overnight at 4°C, followed by conjugation to the secondary antibody(SP-0023) and DAB(C-0010) staining