



## Rabbit Anti-NPPC/Atrial natriuretic peptide antibody

SL1069R

<b>Product Name:</b>	NPPC/Atrial natriuretic peptide
<b>Chinese Name:</b>	C型钠利尿多肽抗体
<b>Alias:</b>	NPPC; ANP; C type natriuretic peptide precursor; C-type natriuretic peptide; CNP-22; CNP-29; CNP-53; CNP; CNP2; Natriuretic peptide precursor C; pro-natriuretic peptide; ANFC_HUMAN; CNP-53; CNP2; Natriuretic peptide C.
<b>Organism Species:</b>	Rabbit
<b>Clonality:</b>	Polyclonal
<b>React Species:</b>	Human,Mouse,Rat,
<b>Applications:</b>	ELISA=1:500-1000IHC-P=1:400-800IHC-F=1:400-800IF=1:100-500 (Paraffin sections need antigen repair) not yet tested in other applications. optimal dilutions/concentrations should be determined by the end user.
<b>Molecular weight:</b>	14kDa
<b>Cellular localization:</b>	Secretory protein
<b>Form:</b>	Lyophilized or Liquid
<b>Concentration:</b>	1mg/ml
<b>immunogen:</b>	KLH conjugated synthetic peptide derived from human proCNP:103-126/126
<b>Lsotype:</b>	IgG
<b>Purification:</b>	affinity purified by Protein A
<b>Storage Buffer:</b>	0.01M TBS(pH7.4) with 1% BSA, 0.03% Proclin300 and 50% Glycerol.
<b>Storage:</b>	Store at -20 °C for one year. Avoid repeated freeze/thaw cycles. The lyophilized antibody is stable at room temperature for at least one month and for greater than a year when kept at -20°C. When reconstituted in sterile pH 7.4 0.01M PBS or diluent of antibody the antibody is stable for at least two weeks at 2-4 °C.
<b>PubMed:</b>	<a href="#">PubMed</a>
<b>Product Detail:</b>	Natriuretic peptides comprise a family of 3 structurally related molecules: atrial natriuretic peptide (ANP; MIM 108780), brain natriuretic peptide (BNP; MIM 600295), and C-type natriuretic peptide, CNP, encoded by a gene symbolized NPPC. These

peptides possess potent natriuretic, diuretic, and vasodilating activities and are implicated in body fluid homeostasis and blood pressure control.

**Function:**

Hormone which plays a role in endochondral ossification through regulation of cartilaginous growth plate chondrocytes proliferation and differentiation. May also be vasoactive and natriuretic. Specifically binds and stimulates the cGMP production of the NPR2 receptor. Binds the clearance receptor NPR3

**Subcellular Location:**

Secreted.

**Similarity:**

Belongs to the natriuretic peptide family.

**SWISS:**

P23582

**Gene ID:**

4880

**Database links:**

[Entrez Gene: 4880](#) Human

[Entrez Gene: 18159](#) Mouse

[Entrez Gene: 114593](#) Rat

[Omim: 600296](#) Human

[SwissProt: P23582](#) Human

[SwissProt: Q61839](#) Mouse

[SwissProt: P55207](#) Rat

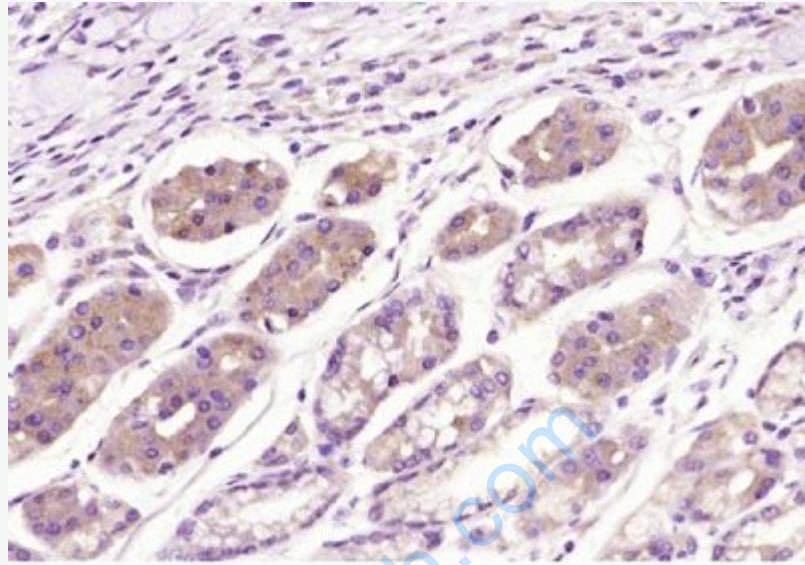
[Unigene: 247916](#) Human

[Unigene: 12802](#) Mouse

[Unigene: 10637](#) Rat

**Important Note:**

This product as supplied is intended for research use only, not for use in human, therapeutic or diagnostic applications.



**Picture:**

Paraformaldehyde-fixed, paraffin embedded (human gastric carcinoma); Antigen retrieval by boiling in sodium citrate buffer (pH6.0) for 15min; Block endogenous peroxidase by 3% hydrogen peroxide for 20 minutes; Blocking buffer (normal goat serum) at 37°C for 30min; Antibody incubation with (NPPC) Polyclonal Antibody, Unconjugated (SL1069R) at 1:200 overnight at 4°C, followed by operating according to SP Kit(Rabbit) (sp-0023) instructions and DAB staining.



Tissue/cell: mouse heart tissue; 4% Paraformaldehyde-fixed and paraffin-embedded;  
Antigen retrieval: citrate buffer ( 0.01M, pH 6.0 ), Boiling bathing for 15min; Block endogenous peroxidase by 3% Hydrogen peroxide for 30min; Blocking buffer (normal goat serum,C-0005) at 37°C for 20 min;  
Incubation: Anti-proCNP/NPPC Polyclonal Antibody, Unconjugated(SL1069R) 1:200, overnight at 4°C, followed by conjugation to the secondary antibody(SP-0023) and DAB(C-0010) staining