



Rabbit Anti-I-309/CCL1 antibody

SL10710R

| | |
|-------------------------------|---|
| Product Name: | I-309/CCL1 |
| Chinese Name: | 嗜酸粒细胞趋化蛋白CCL1抗体 |
| Alias: | C-C motif chemokine 1 precursor; chemokine (C-C motif) ligand 1; BF534335; I-309; Scya1; CCL1; Chemokine CC Motif Ligand 1; inflammatory cytokine I-309; P500; SCYA1; SISE; small inducible cytokine A1; T lymphocyte secreted protein I-309; TCA3; CCL1_HUMAN; CCL1_MOUSE. |
| Organism Species: | Rabbit |
| Clonality: | Polyclonal |
| React Species: | Mouse,Rat, |
| Applications: | ELISA=1:500-1000IHC-P=1:400-800IHC-F=1:400-800ICC=1:100-500IF=1:100-500 (Paraffin sections need antigen repair) not yet tested in other applications. optimal dilutions/concentrations should be determined by the end user. |
| Molecular weight: | 10kDa |
| Cellular localization: | Secretory protein |
| Form: | Lyophilized or Liquid |
| Concentration: | 1mg/ml |
| immunogen: | KLH conjugated synthetic peptide derived from mouse I-309/CCL1:31-80/92 |
| Lsotype: | IgG |
| Purification: | affinity purified by Protein A |
| Storage Buffer: | 0.01M TBS(pH7.4) with 1% BSA, 0.03% Proclin300 and 50% Glycerol. |
| Storage: | Store at -20 °C for one year. Avoid repeated freeze/thaw cycles. The lyophilized antibody is stable at room temperature for at least one month and for greater than a year when kept at -20°C. When reconstituted in sterile pH 7.4 0.01M PBS or diluent of antibody the antibody is stable for at least two weeks at 2-4 °C. |
| PubMed: | PubMed |
| Product Detail: | This gene is one of several cytokine genes clustered on the q-arm of chromosome 17. Cytokines are a family of secreted proteins involved in immunoregulatory and inflammatory processes. The protein encoded by this gene is structurally related to the CXC subfamily of cytokines. Members of this subfamily are characterized by two |

cysteines separated by a single amino acid. This cytokine is secreted by activated T cells and displays chemotactic activity for monocytes but not for neutrophils. It binds to the chemokine receptor CCR8. [provided by RefSeq, Jul 2008].

Function:

Cytokine that is chemotactic for monocytes but not for neutrophils. Binds to CCR8.

Subunit:

Monomer.

Subcellular Location:

Secreted.

Similarity:

Belongs to the intercrine beta (chemokine CC) family.

SWISS:

P10146

Gene ID:

20290

Database links:

[Entrez Gene: 6346](#)Human

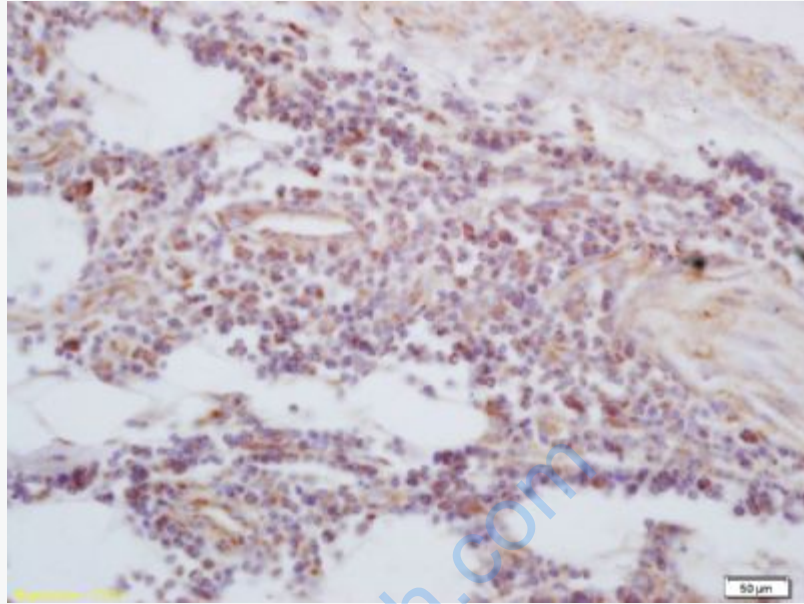
[Oimim: 182281](#)Human

[SwissProt: P22362](#)Human

[Unigene: 72918](#)Human

Important Note:

This product as supplied is intended for research use only, not for use in human, therapeutic or diagnostic applications.



Picture:

Tissue/cell: human lung carcinoma; 4% Paraformaldehyde-fixed and paraffin-embedded;

Antigen retrieval: citrate buffer (0.01M, pH 6.0), Boiling bathing for 15min; Block endogenous peroxidase by 3% Hydrogen peroxide for 30min; Blocking buffer (normal goat serum,C-0005) at 37°C for 20 min;

Incubation: Anti-I-309/CCL1 Polyclonal Antibody, Unconjugated(SL10710R) 1:200, overnight at 4°C, followed by conjugation to the secondary antibody(SP-0023) and DAB(C-0010) staining