



Rabbit Anti-CTR1 antibody

SL10773R

Product Name:	CTR1
Chinese Name:	铜离子Transporter1抗体
Alias:	Copper transport 1 homolog; Copper transporter 1; COPT1; COPT1_HUMAN; CTR1; hCTR1; High affinity copper uptake protein 1; SLC31A1; solute carrier family 31 (copper transporters) member 1; Solute carrier family 31 member 1.
Organism Species:	Rabbit
Clonality:	Polyclonal
React Species:	Human,Mouse,Rat,Chicken,Pig,Cow,Horse,Rabbit,Sheep,
Applications:	ELISA=1:500-1000IHC-P=1:400-800IHC-F=1:400-800ICC=1:100-500IF=1:100-500 (Paraffin sections need antigen repair) not yet tested in other applications. optimal dilutions/concentrations should be determined by the end user.
Molecular weight:	21kDa
Cellular localization:	The cell membrane
Form:	Lyophilized or Liquid
Concentration:	1mg/ml
immunogen:	KLH conjugated synthetic peptide derived from human CTR1:51-150/190<Cytoplasmic>
Lsotype:	IgG
Purification:	affinity purified by Protein A
Storage Buffer:	0.01M TBS(pH7.4) with 1% BSA, 0.03% Proclin300 and 50% Glycerol.
Storage:	Store at -20 °C for one year. Avoid repeated freeze/thaw cycles. The lyophilized antibody is stable at room temperature for at least one month and for greater than a year when kept at -20°C. When reconstituted in sterile pH 7.4 0.01M PBS or diluent of antibody the antibody is stable for at least two weeks at 2-4 °C.
PubMed:	PubMed
Product Detail:	The protein encoded by this gene is a high-affinity copper transporter found in the cell membrane. The encoded protein functions as a homotrimer to effect the uptake of dietary copper. [provided by RefSeq, Aug 2011]

Function:

High-affinity, saturable copper transporter involved in dietary copper uptake.

Subunit:

Homotrimer.

Subcellular Location:

Cell membrane. Localizes to the apical membrane in intestinal epithelial cells.

Post-translational modifications:

O-Glycosylation at Thr-27 protects from proteolytic cleavage in the N-terminal extracellular domain.

Similarity:

Belongs to the copper transporter (Ctr) (TC 1.A.56) family. SLC31A subfamily.

SWISS:

O15431

Gene ID:

1317

Database links:

[Entrez Gene: 1317](#)Human

[Entrez Gene: 20529](#)Mouse

[Entrez Gene: 171135](#)Rat

[Omim: 603085](#)Human

[SwissProt: O15431](#)Human

[SwissProt: Q8K211](#)Mouse

[SwissProt: Q9JK41](#)Rat

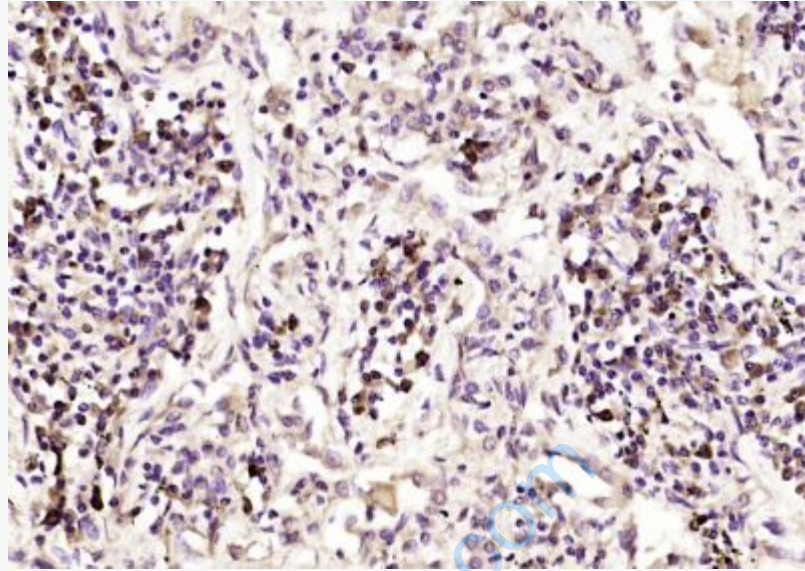
[Unigene: 532315](#)Human

[Unigene: 248637](#)Mouse

[Unigene: 2789](#)Rat

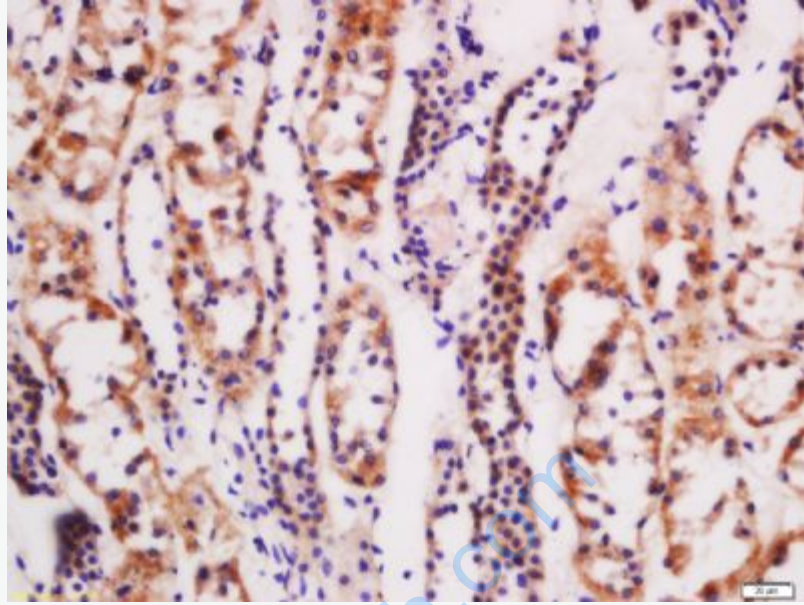
Important Note:

This product as supplied is intended for research use only, not for use in human, therapeutic or diagnostic applications.



Picture:

araformaldehyde-fixed, paraffin embedded (human lung carcinoma); Antigen retrieval by boiling in sodium citrate buffer (pH6.0) for 15min; Block endogenous peroxidase by 3% hydrogen peroxide for 20 minutes; Blocking buffer (normal goat serum) at 37°C for 30min; Antibody incubation with (CTR1) Polyclonal Antibody, Unconjugated (SL10773R) at 1:200 overnight at 4°C, followed by operating according to SP Kit(Rabbit) (sp-0023) instructions and DAB staining.



Tissue/cell: human kidney tissue; 4% Paraformaldehyde-fixed and paraffin-embedded;

Antigen retrieval: citrate buffer (0.01M, pH 6.0), Boiling bathing for 15min; Block endogenous peroxidase by 3% Hydrogen peroxide for 30min; Blocking buffer (normal goat serum,C-0005) at 37°C for 20 min;

Incubation: Anti-CTR1 Polyclonal Antibody, Unconjugated(SL10773R) 1:200, overnight at 4°C, followed by conjugation to the secondary antibody(SP-0023) and DAB(C-0010) staining