



Rabbit Anti-ABI3 antibody

SL10798R

Product Name:	ABI3
Chinese Name:	ABI基因家族2抗体
Alias:	ABI gene family member 3; Nesh; New molecule including SH3; ABI3 HUMAN.
Organism Species:	Rabbit
Clonality:	Polyclonal
React Species:	Human,Mouse,Rat,Dog,Pig,Cow,Rabbit,Sheep,
Applications:	WB=1:500-2000ELISA=1:500-1000IHC-P=1:400-800IHC-F=1:400-800ICC=1:100-500IF=1:100-500 (Paraffin sections need antigen repair) not yet tested in other applications. optimal dilutions/concentrations should be determined by the end user.
Molecular weight:	39kDa
Cellular localization:	cytoplasmic
Form:	Lyophilized or Liquid
Concentration:	1mg/ml
immunogen:	KLH conjugated synthetic peptide derived from human ABI3:21-120/366
Lsotype:	IgG
Purification:	affinity purified by Protein A
Storage Buffer:	0.01M TBS(pH7.4) with 1% BSA, 0.03% Proclin300 and 50% Glycerol.
Storage:	Store at -20 °C for one year. Avoid repeated freeze/thaw cycles. The lyophilized antibody is stable at room temperature for at least one month and for greater than a year when kept at -20°C. When reconstituted in sterile pH 7.4 0.01M PBS or diluent of antibody the antibody is stable for at least two weeks at 2-4 °C.
PubMed:	PubMed
Product Detail:	ABI3 is thought to inhibit tumor metastasis. In vitro, ABI3 reduces cell motility. Function: May inhibit tumor metastasis. In vitro, reduces cell motility. Subunit: May interact with PAK1 and PAK2. Probably interacts with TARSH.

Subcellular Location:

Cytoplasm. Note=Colocalizes with PAK2 at leading edge of cells.

Tissue Specificity:

Expressed in heart, lung, liver, pancreas, kidney, placenta and at low levels in brain and skeletal muscle.

Similarity:

Belongs to the ABI family.
Contains 1 SH3 domain.

SWISS:

Q9P2A4

Gene ID:

51225

Database links:

[Entrez Gene: 51225](#)Human

[Entrez Gene: 66610](#)Mouse

[Entrez Gene: 303476](#)Rat

[Omim: 606363](#)Human

[SwissProt: Q9P2A4](#)Human

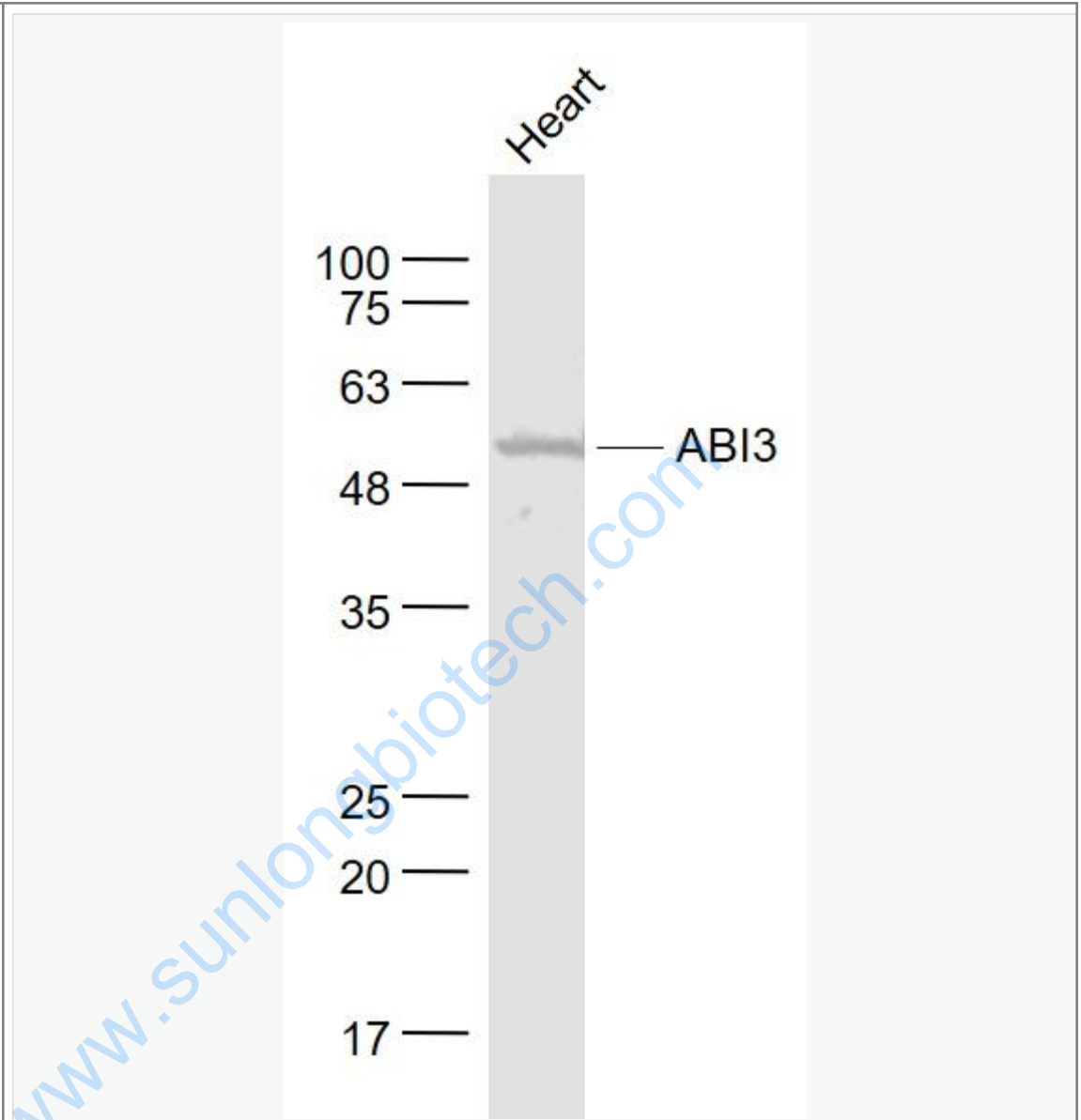
[SwissProt: Q8BYZ1](#)Mouse

[Unigene: 130719](#)Human

Important Note:

This product as supplied is intended for research use only, not for use in human, therapeutic or diagnostic applications.

Picture:



Sample:

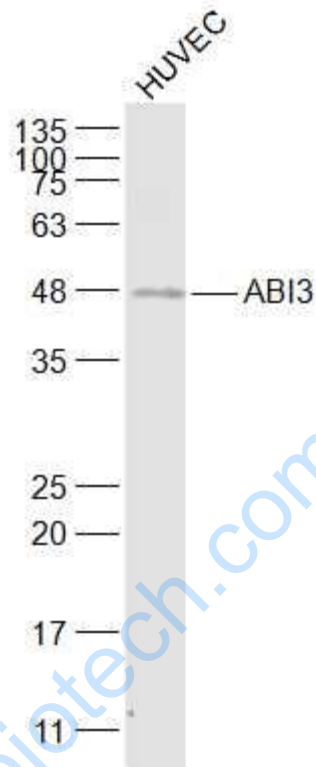
Heart (Mouse) Lysate at 40 ug

Primary: Anti- ABI3 (SL10798R) at 1/1000 dilution

Secondary: IRDye800CW Goat Anti-Rabbit IgG at 1/20000 dilution

Predicted band size: 39 kD

Observed band size: 50 kD



Sample:

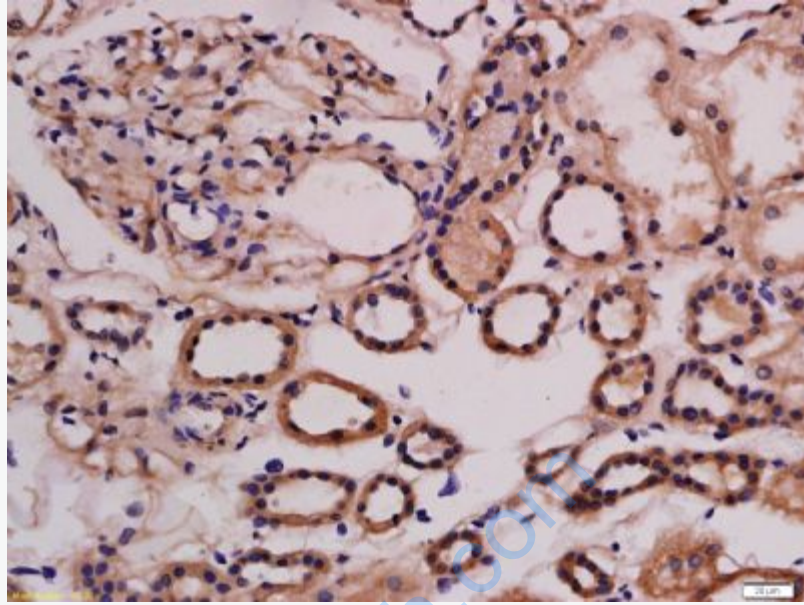
HUVEC(Human) Cell Lysate at 30 ug

Primary: Anti-ABI3 (SL10798R) at 1/1000 dilution

Secondary: IRDye800CW Goat Anti-Rabbit IgG at 1/20000 dilution

Predicted band size: 39 kD

Observed band size: 48 kD



Tissue/cell: human kidney tissue; 4% Paraformaldehyde-fixed and paraffin-embedded;

Antigen retrieval: citrate buffer (0.01M, pH 6.0), Boiling bathing for 15min; Block endogenous peroxidase by 3% Hydrogen peroxide for 30min; Blocking buffer (normal goat serum,C-0005) at 37°C for 20 min;

Incubation: Anti-ABI3 Polyclonal Antibody, Unconjugated(SL10798R) 1:200, overnight at 4°C, followed by conjugation to the secondary antibody(SP-0023) and DAB(C-0010) staining