



Rabbit Anti-IL-6 antibody

SL10807R

Product Name:	IL-6
Chinese Name:	白介素6抗体
Alias:	IL6; Interleukin BSF 2; B cell differentiation factor; B cell stimulatory factor 2; BSF 2; BSF2; CDF; CTL differentiation factor; Cytotoxic T cell differentiation factor; Hepatocyte stimulating factor; HGF; HPGF; HSF; Hybridoma growth factor; Hybridoma plasmacytoma growth factor; IFNB2; IL 6; IL6 protein; Interferon beta 2; Interleukin 6 (interferon beta 2); Interleukin 6; Interleukin-6; IL6_HUMAN; Interleukin6.
Organism Species:	Rabbit
Clonality:	Polyclonal
React Species:	Human,
Applications:	WB=1:500-2000ELISA=1:500-1000IHC-P=1:400-800IHC-F=1:400-800ICC=1:100-500IF=1:100-500 (Paraffin sections need antigen repair) not yet tested in other applications. optimal dilutions/concentrations should be determined by the end user.
Molecular weight:	23kDa
Cellular localization:	The cell membraneSecretory protein
Form:	Lyophilized or Liquid
Concentration:	1mg/1ml
immunogen:	Recombinant human IL-6 corresponding to 30-212/212aa (C-6x His-Tag) :
Lsotype:	IgG
Purification:	affinity purified by Protein A
Storage Buffer:	0.01M TBS(pH7.4) with 1% BSA, 0.03% Proclin300 and 50% Glycerol.
Storage:	Store at -20 °C for one year. Avoid repeated freeze/thaw cycles. The lyophilized antibody is stable at room temperature for at least one month and for greater than a year when kept at -20°C. When reconstituted in sterile pH 7.4 0.01M PBS or diluent of antibody the antibody is stable for at least two weeks at 2-4 °C.
PubMed:	PubMed
Product Detail:	This gene encodes a cytokine that functions in inflammation and the maturation of B cells. In addition, the encoded protein has been shown to be an endogenous pyrogen

capable of inducing fever in people with autoimmune diseases or infections. The protein is primarily produced at sites of acute and chronic inflammation, where it is secreted into the serum and induces a transcriptional inflammatory response through interleukin 6 receptor, alpha. The functioning of this gene is implicated in a wide variety of inflammation-associated disease states, including susceptibility to diabetes mellitus and systemic juvenile rheumatoid arthritis. [provided by RefSeq, Jun 2011].

Function:

Cytokine with a wide variety of biological functions. It is a potent inducer of the acute phase response. Plays an essential role in the final differentiation of B-cells into Ig-secreting cells Involved in lymphocyte and monocyte differentiation. It induces myeloma and plasmacytoma growth and induces nerve cells differentiation Acts on B-cells, T-cells, hepatocytes, hematopoietic progenitor cells and cells of the CNS. Also acts as a myokine. It is discharged into the bloodstream after muscle contraction and acts to increase the breakdown of fats and to improve insulin resistance.

Subcellular Location:

Secreted.

Post-translational modifications:

N- and O-glycosylated.

DISEASE:

Genetic variations in IL6 are associated with susceptibility to rheumatoid arthritis systemic juvenile (RASJ) [MIM:604302]. An inflammatory articular disorder with systemic-onset beginning before the age of 16. It represents a subgroup of juvenile arthritis associated with severe extraarticular features and occasionally fatal complications. During active phases of the disorder, patients display a typical daily spiking fever, an evanescent macular rash, lymphadenopathy, hepatosplenomegaly, serositis, myalgia and arthritis. Note=A IL6 promoter polymorphism is associated with a lifetime risk of development of Kaposi sarcoma in HIV-infected men.

Similarity:

Belongs to the IL-6 superfamily.

SWISS:

P05231

Gene ID:

3569

Database links:

[Entrez Gene: 3569](#)Human

[Entrez Gene: 16193](#)Mouse

[Entrez Gene: 24498](#)Rat

[Omim: 147620](#)Human

[SwissProt: P05231](#)Human

[SwissProt: P08505](#)Mouse

[SwissProt: P20607](#)Rat

[Unigene: 654458](#)Human

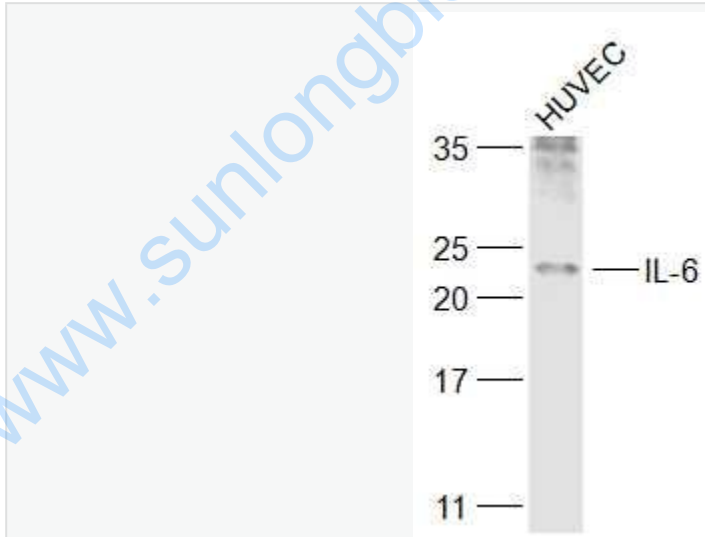
[Unigene: 1019](#)Mouse

[Unigene: 9873](#)Rat

Important Note:

This product as supplied is intended for research use only, not for use in human, therapeutic or diagnostic applications.

Picture:



Sample:

HUVEC(Human) Cell Lysate at 30 ug

Primary: Anti-IL-6 (SL10807R) at 1/1000 dilution

Secondary: IRDye800CW Goat Anti-Rabbit IgG at 1/20000 dilution

Predicted band size: 23 kD

	Observed band size: 23 kD
--	---------------------------

www.sunlongbiotech.com