



## Rabbit Anti-PEG10 antibody

SL1084R

<b>Product Name:</b>	PEG10
<b>Chinese Name:</b>	肝癌高表达基因抗体
<b>Alias:</b>	Paternally expressed gene 10; MyEF 3; AA407948; Edr; Embryonal carcinoma differentiation regulated; HB 1; HB1; KIAA1051; Mar2; Mart2; MEF3 like 1; MEF3L; MEF3L1; Paternally expressed 10; Paternally expressed gene 10 ORF1; PEG10 protein; Putative uncharacterized protein PEG10; Retrotransposon gag domain containing 3; RGAG3; PEG10_HUMAN; Retrotransposon-derived protein PEG10; Embryonal carcinoma differentiation-regulated protein; Mammalian retrotransposon-derived protein 2; Myelin expression factor 3-like protein 1; MEF3-like protein 1; Paternally expressed gene 10 protein; Retrotransposon gag domain-containing protein 3; Retrotransposon-derived gag-like polyprotein; Ty3/Gypsy-like protein; EDR.
<b>Organism Species:</b>	Rabbit
<b>Clonality:</b>	Polyclonal
<b>React Species:</b>	Human,Mouse,Rat,Dog,Pig,Cow,
<b>Applications:</b>	WB=1:500-2000ELISA=1:500-1000IHC-P=1:400-800IHC-F=1:400-800IF=1:100-500 (Paraffin sections need antigen repair) not yet tested in other applications. optimal dilutions/concentrations should be determined by the end user.
<b>Molecular weight:</b>	78kDa
<b>Cellular localization:</b>	The nucleuscytoplasmic
<b>Form:</b>	Lyophilized or Liquid
<b>Concentration:</b>	1mg/ml
<b>immunogen:</b>	KLH conjugated synthetic peptide derived from human PEG10:301-400/708
<b>Lsotype:</b>	IgG
<b>Purification:</b>	affinity purified by Protein A
<b>Storage Buffer:</b>	0.01M TBS(pH7.4) with 1% BSA, 0.03% Proclin300 and 50% Glycerol.
<b>Storage:</b>	Store at -20 °C for one year. Avoid repeated freeze/thaw cycles. The lyophilized antibody is stable at room temperature for at least one month and for greater than a year when kept at -20°C. When reconstituted in sterile pH 7.4 0.01M PBS or diluent of antibody the antibody is stable for at least two weeks at 2-4 °C.

**PubMed:**[PubMed](#)

This is a paternally expressed imprinted gene that encodes transcripts containing two overlapping open reading frames (ORFs), RF1 and RF1/RF2, as well as retroviral-like slippage and pseudoknot elements, which can induce a -1 nucleotide frame-shift. ORF1 encodes a shorter isoform with a CCHC-type zinc finger motif containing a sequence characteristic of gag proteins of most retroviruses and some retrotransposons. The longer isoform is the result of -1 translational frame-shifting leading to translation of a gag/pol-like protein combining RF1 and RF2. It contains the active-site consensus sequence of the protease domain of pol proteins. Additional isoforms resulting from alternatively spliced transcript variants, as well as from use of upstream non-AUG (CUG) start codon, have been reported for this gene. Increased expression of this gene is associated with hepatocellular carcinomas. [provided by RefSeq, May 2010].

**Function:**

Prevents apoptosis in hepatocellular carcinoma (HCC) cells through interaction with SIAH1, a mediator of apoptosis. May also have a role in cell growth promotion and hepatoma formation. Inhibits the TGF-beta signaling by interacting with the TGF-beta receptor ALK1. When overexpressed, induces the formation of cellular extension, such as filipodia in association with ALK1. Involved at the immediate early stage of adipocyte differentiation (By similarity). May bind to the 5'-GCCTGTCTTT-3' DNA sequence of the MB1 domain in the myelin basic protein (MBP) promoter.

**Subunit:**

Interacts with ALK1, SIAH1 and SIAH2.

**Subcellular Location:**

Nucleus. Cytoplasm. Note=Detected predominantly in the cytoplasm of breast and prostate carcinomas, in hepatocellular carcinoma (HCC) and B-cell chronic lymphocytic leukemia (B-CLL) cells and in the Hep-G2 cell line. Colocalized with ALK1.

**Tissue Specificity:**

Expressed in the cytotrophoblast layer but not in the overlying syncytiotrophoblast of the placenta. Expressed in prostate and breast carcinomas but not in normal breast and prostate epithelial cells. Expressed in the HepG2 cell line (at protein level). Expressed in brain, liver, spleen, kidney, thymus, lung, ovary, testis, reactive lymph node, skeletal muscle, adipose tissue and placenta. Expressed in pancreatic and hepatocellular carcinomas (HCC).

**Post-translational modifications:**

Isoform RF1/RF2 undergoes proteolytic cleavage.

**Similarity:**

Contains 1 CCHC-type zinc finger.

**SWISS:**

Q86TG7

**Product Detail:**

**Gene ID:**  
2389

**Database links:**

[Entrez Gene: 23089](#)Human

[Entrez Gene: 170676](#)Mouse

[Entrez Gene: 654416](#)Pig

[Omin: 609810](#)Human

[SwissProt: Q86TG7](#)Human

[SwissProt: Q7TN75](#)Mouse

[Unigene: 147492](#)Human

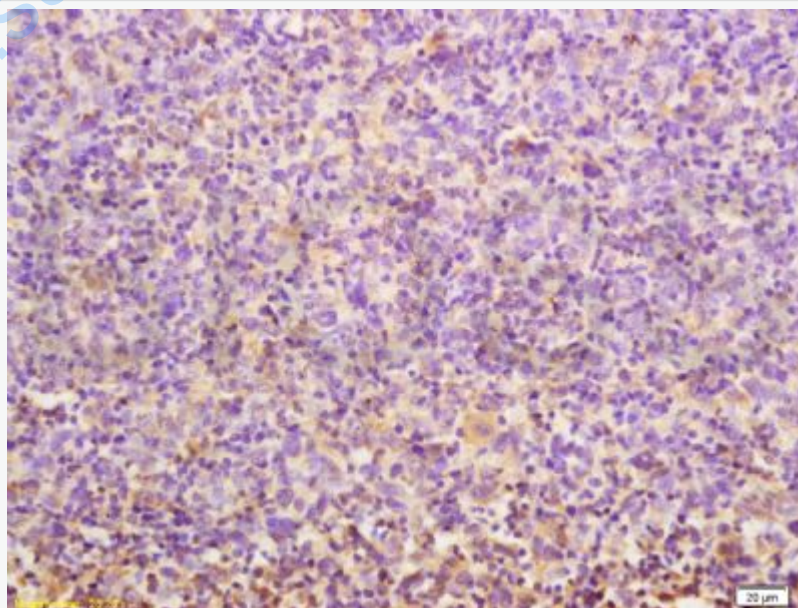
[Unigene: 320575](#)Mouse

**Important Note:**

This product as supplied is intended for research use only, not for use in human, therapeutic or diagnostic applications.

PEG10是一个癌基因,在Tumour癌变过程中起重要作用。PEG10在原发性肝癌中表达明显上调,体外细胞试验证明PEG10影响细胞周期,可促进细胞生长,在肝细胞癌变过程中起重要作用。

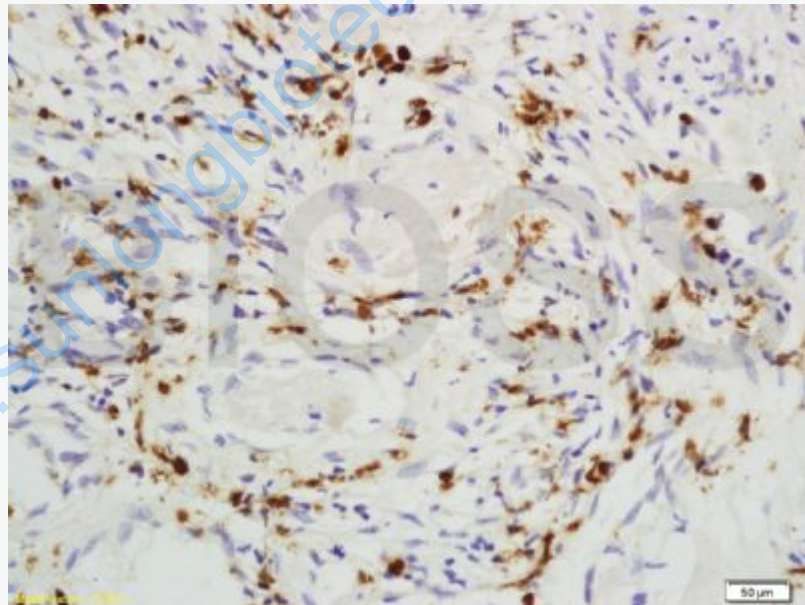
**Picture:**



Tissue/cell: mouse cancer tissue; 4% Paraformaldehyde-fixed and paraffin-embedded;

Antigen retrieval: citrate buffer ( 0.01M, pH 6.0 ), Boiling bathing for 15min; Block endogenous peroxidase by 3% Hydrogen peroxide for 30min; Blocking buffer (normal goat serum,C-0005) at 37°C for 20 min;

Incubation: Anti-PEG10 Polyclonal Antibody, Unconjugated(SL1084R) 1:200, overnight at 4°C, followed by conjugation to the secondary antibody(SP-0023) and DAB(C-0010) staining



Tissue/cell: human rectal carcinoma; 4% Paraformaldehyde-fixed and paraffin-embedded;

Antigen retrieval: citrate buffer ( 0.01M, pH 6.0 ), Boiling bathing for 15min; Block endogenous peroxidase by 3% Hydrogen peroxide for 30min; Blocking buffer (normal goat serum,C-0005) at 37°C for 20 min;

Incubation: Anti-PEG10 Polyclonal Antibody, Unconjugated(SL1084R) 1:200,  
overnight at 4°C, followed by conjugation to the secondary antibody(SP-0023) and  
DAB(C-0010) staining

[www.sunlongbiotech.com](http://www.sunlongbiotech.com)