



Rabbit Anti-Reg3a antibody

SL10913R

Product Name:	Reg3a
Chinese Name:	胰岛β细胞生长因子抗体
Alias:	Reg III alpha; REG III; Reg III-alpha; REG-3-alpha; REG3; Reg3a; REG3A_HUMAN; Hepatocarcinoma intestine pancreas; HIP; Human proislet peptide; INGAP; Pancreatic beta cell growth factor; Pancreatitis associated protein 1; Pancreatitis associated protein; Pancreatitis-associated protein 1; PAP; PAP H; PAP homologous protein; PAP1; PBCGF; Proliferation inducing protein 34; Proliferation inducing protein 42; Regenerating islet derived 3 alpha; Regenerating islet derived protein 3 alpha precursor; Regenerating islet-derived protein 3-alpha; Regenerating islet-derived protein III-alpha.
Organism Species:	Rabbit
Clonality:	Polyclonal
React Species:	Human,
Applications:	WB=1:500-2000ELISA=1:500-1000IHC-F=1:400-800ICC=1:100-500IF=1:100-500 (Paraffin sections need antigen repair) not yet tested in other applications. optimal dilutions/concentrations should be determined by the end user.
Molecular weight:	16kDa
Cellular localization:	Secretory protein
Form:	Lyophilized or Liquid
Concentration:	1mg/ml
immunogen:	KLH conjugated synthetic peptide derived from human Reg3a:101-175/175
Lsotype:	IgG
Purification:	affinity purified by Protein A
Storage Buffer:	0.01M TBS(pH7.4) with 1% BSA, 0.03% Proclin300 and 50% Glycerol.
Storage:	Store at -20 °C for one year. Avoid repeated freeze/thaw cycles. The lyophilized antibody is stable at room temperature for at least one month and for greater than a year when kept at -20°C. When reconstituted in sterile pH 7.4 0.01M PBS or diluent of antibody the antibody is stable for at least two weeks at 2-4 °C.
PubMed:	PubMed
Product Detail:	This gene encodes a pancreatic secretory protein that may be involved in cell

proliferation or differentiation. It has similarity to the C-type lectin superfamily. The enhanced expression of this gene is observed during pancreatic inflammation and liver carcinogenesis. Alternate splicing results in multiple transcript variants that encode the same protein.[provided by RefSeq, Dec 2010]

Function:

Might be a stress protein involved in the control of bacterial proliferation.

Subcellular Location:

Secreted. Found in the apical region of pancreatic acinar cells.

Tissue Specificity:

Constitutively expressed in intestine. Low expression is found in healthy pancreas. Overexpressed during the acute phase of pancreatitis and in some patients with chronic pancreatitis.

Similarity:

Contains 1 C-type lectin domain.

SWISS:

Q06141

Gene ID:

5068

Database links:

[Entrez Gene: 5068](#)Human

[Omid: 167805](#)Human

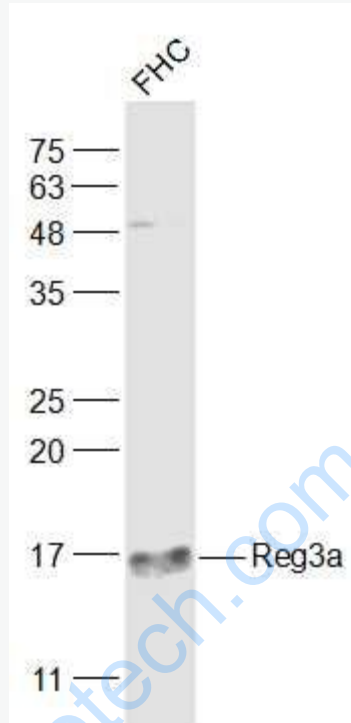
[SwissProt: Q06141](#)Human

[Unigene: 567312](#)Human

Important Note:

This product as supplied is intended for research use only, not for use in human, therapeutic or diagnostic applications.

Picture:



Sample:

FHC(Human) Cell Lysate at 30 ug

Primary: Anti-Reg3a (SL10913R) at 1/500 dilution

Secondary: IRDye800CW Goat Anti-Rabbit IgG at 1/20000 dilution

Predicted band size: 16 kD

Observed band size: 16 kD