



Rabbit Anti-CCR-2 antibody

SL10963R

Product Name:	CCR-2
Chinese Name:	细胞表面Chemokine受体2抗体
Alias:	C-C Chemokine receptor 2B; C C chemokine receptor type 2; C C CKR 2; CC chemokine receptor type 2; CC CKR 2; CCCKR2; CCR 2; CCR1L; CCR2A; CCR2B; CCR5L; CD192; CD192 antigen; Chemokine C C motif receptor 2; Chemokine CC Motif Receptor 2; CKR 2; CKR2; CKR2A; CKR2B; CMKBR2; MCP 1 R; MCP1 RECEPTOR; MCP1R; Monocyte chemoattractant protein 1 receptor; Monocyte Chemotactic Protein 1 Receptor; CCR2_HUMAN; C-C chemokine receptor type 2; C-C CKR-2; CC-CKR-2; CCR-2; CCR2; Monocyte chemoattractant protein 1 receptor; MCP-1-R.
Organism Species:	Rabbit
Clonality:	Polyclonal
React Species:	Human,Mouse,Rat,
Applications:	ELISA=1:500-1000Flow-Cyt=1µg/Test not yet tested in other applications. optimal dilutions/concentrations should be determined by the end user.
Molecular weight:	41kDa
Cellular localization:	The cell membrane
Form:	Lyophilized or Liquid
Concentration:	1mg/ml
immunogen:	KLH conjugated synthetic peptide derived from mouse CCR-2:1-42/373<Extracellular>
Lsotype:	IgG
Purification:	affinity purified by Protein A
Storage Buffer:	0.01M TBS(pH7.4) with 1% BSA, 0.03% Proclin300 and 50% Glycerol.
Storage:	Store at -20 °C for one year. Avoid repeated freeze/thaw cycles. The lyophilized antibody is stable at room temperature for at least one month and for greater than a year when kept at -20°C. When reconstituted in sterile pH 7.4 0.01M PBS or diluent of antibody the antibody is stable for at least two weeks at 2-4 °C.
PubMed:	PubMed
Product Detail:	This gene encodes two isoforms of a receptor for monocyte chemoattractant protein-1, a

chemokine which specifically mediates monocyte chemotaxis. Monocyte chemoattractant protein-1 is involved in monocyte infiltration in inflammatory diseases such as rheumatoid arthritis as well as in the inflammatory response against tumors. The receptors encoded by this gene mediate agonist-dependent calcium mobilization and inhibition of adenylyl cyclase. This gene is located in the chemokine receptor gene cluster region. Two alternatively spliced transcript variants are expressed by the gene. [provided by RefSeq, Mar 2009].

Function:

Receptor for the MCP-1, MCP-3 and MCP-4 chemokines. Transduces a signal by increasing the intracellular calcium ions level. Alternative coreceptor with CD4 for HIV-1 infection.

Subunit:

Binds to HIV-1 Tat. Interacts with ARRB1.

Subcellular Location:

Cell membrane; Multi-pass membrane protein.

Post-translational modifications:

N-glycosylated.

Similarity:

Belongs to the G-protein coupled receptor 1 family.

SWISS:

P41597

Gene ID:

12772

Database links:

[Entrez Gene: 729230](#)Human

[Entrez Gene: 12772](#)Mouse

[Entrez Gene: 60463](#)Rat

[Omim: 601267](#)Human

[SwissProt: P41597](#)Human

[SwissProt: P51683](#)Mouse

[SwissProt: O55193](#)Rat

[Unigene: 511794](#)Human

[Unigene: 705362](#)Human

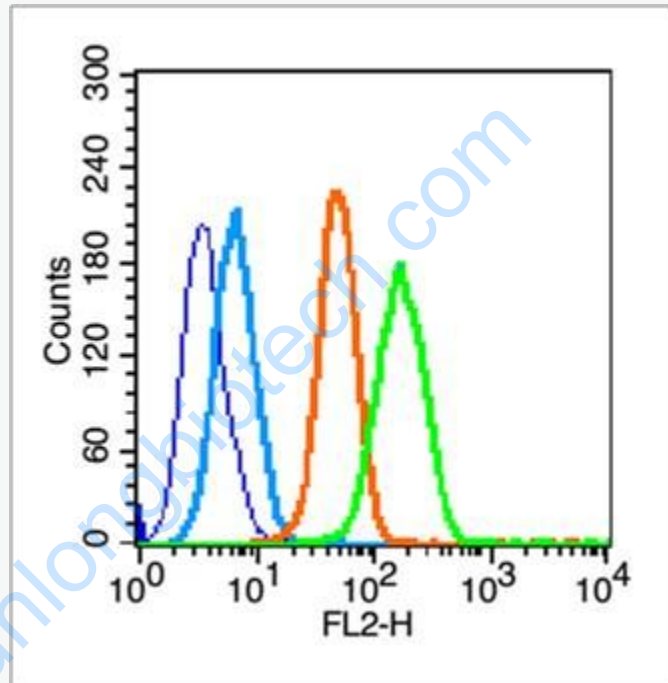
[Unigene: 6272](#)Mouse

[Unigene: 211983](#)Rat

Important Note:

This product as supplied is intended for research use only, not for use in human, therapeutic or diagnostic applications.

Picture:



Blank control (blue line): HeLa (fixed with 80% methanol for 5 min at -20°C).

Primary Antibody (green line): Rabbit Anti- CCR-2 antibody (SL10963R), Dilution: $0.2\mu\text{g} / 10^6$ cells;

Isotype Control Antibody (orange line): Rabbit IgG .

Secondary Antibody (white blue line): Goat anti-rabbit IgG-PE, Dilution: $1\mu\text{g} / \text{test}$.