



Rabbit Anti-RCAS1/EBAG9 antibody

SL10982R

Product Name:	RCAS1/EBAG9
Chinese Name:	Tumour相关表面抗原EBAG9抗体
Alias:	BAG9; Cancer associated surface antigen; Cancer associated surface antigen RCAS1; EB9; EBAG 9; Estrogen receptor binding fragment associated gene 9 protein; Estrogen receptor binding site associated antigen 9; PDAF; RCAS 1; RCAS1; Receptor binding cancer antigen expressed on SiSo cells.
Organism Species:	Rabbit
Clonality:	Polyclonal
React Species:	Human,Mouse,Chicken,Pig,Cow,Rabbit,
Applications:	ELISA=1:500-1000IHC-P=1:400-800IHC-F=1:400-800ICC=1:100-500IF=1:100-500 (Paraffin sections need antigen repair) not yet tested in other applications. optimal dilutions/concentrations should be determined by the end user.
Molecular weight:	24kDa
Cellular localization:	cytoplasmicThe cell membrane
Form:	Lyophilized or Liquid
Concentration:	1mg/ml
immunogen:	KLH conjugated synthetic peptide derived from human RCAS1:151-213/213
Lsotype:	IgG
Purification:	affinity purified by Protein A
Storage Buffer:	Preservative: 15mM Sodium Azide, Constituents: 1% BSA, 0.01M PBS, pH 7.4
Storage:	Store at -20 °C for one year. Avoid repeated freeze/thaw cycles. The lyophilized antibody is stable at room temperature for at least one month and for greater than a year when kept at -20°C. When reconstituted in sterile pH 7.4 0.01M PBS or diluent of antibody the antibody is stable for at least two weeks at 2-4 °C.
PubMed:	PubMed
Product Detail:	This gene was identified as an estrogen-responsive gene. Regulation of transcription by estrogen is mediated by estrogen receptor, which binds to the estrogen-responsive element found in the 5'-flanking region of this gene. The encoded protein is a tumor-associated antigen that is expressed at high frequency in a variety of cancers. Alternate

splicing results in multiple transcript variants. A pseudogene of this gene has been defined on chromosome 10. [provided by RefSeq, Jul 2013]

Function:

May participate in suppression of cell proliferation and induces apoptotic cell death through activation of interleukin-1-beta converting enzyme (ICE)-like proteases

Subunit:

Homodimer.

Subcellular Location:

Golgi apparatus membrane; Single-pass type III membrane protein. Note=According to PubMed:10426319, it also exists as a soluble form which has the same biological activities. The existence of such soluble form is however uncertain.

Tissue Specificity:

Widely expressed. Expressed in ovary, testis, prostate, thymus, muscle and heart, but not in small intestine, colon, lymph nodes, or peripheral blood lymphocytes. The protein is not detected in any of the above organs.

SWISS:

O00559

Gene ID:

9166

Database links:

[Entrez Gene: 9166](#) Human

[Entrez Gene: 55960](#) Mouse

[Entrez Gene: 299864](#) Rat

[Omim: 605772](#) Human

[SwissProt: O00559](#) Human

[SwissProt: Q9D0V7](#) Mouse

[SwissProt: Q5PQP2](#) Rat

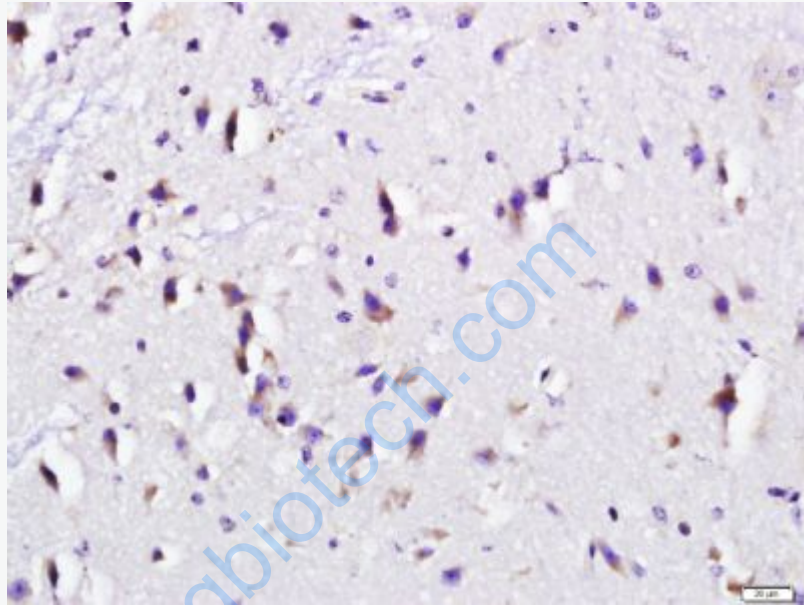
[Unigene: 409368](#) Human

[Unigene: 489725](#) Mouse

[Unigene: 64132](#) Rat

Important Note:

This product as supplied is intended for research use only, not for use in human, therapeutic or diagnostic applications.



Picture:

Tissue/cell: Mouse brain tissue; 4% Paraformaldehyde-fixed and paraffin-embedded;
Antigen retrieval: citrate buffer (0.01M, pH 6.0), Boiling bathing for 15min; Block endogenous peroxidase by 3% Hydrogen peroxide for 30min; Blocking buffer (normal goat serum,C-0005) at 37°C for 20 min;

Incubation: Anti-RCAS1 Polyclonal Antibody, Unconjugated(SL10982R) 1:500, overnight at 4°C, followed by conjugation to the secondary antibody(SP-0023) and DAB(C-0010) staining