



## Rabbit Anti-HRH4 antibody

SL10993R

<b>Product Name:</b>	HRH4
<b>Chinese Name:</b>	组织胺H4受体抗体
<b>Alias:</b>	GPCR105; GPRv53; H4 antibody H4R; HH4R; Histamine H4 receptor; AXOR35; BG26; G protein coupled receptor 105; HRH4_HUMAN; SP9144.
<b>Organism Species:</b>	Rabbit
<b>Clonality:</b>	Polyclonal
<b>React Species:</b>	Mouse,Rat,
<b>Applications:</b>	WB=1:500-2000ELISA=1:500-1000 not yet tested in other applications. optimal dilutions/concentrations should be determined by the end user.
<b>Molecular weight:</b>	44kDa
<b>Cellular localization:</b>	The cell membrane
<b>Form:</b>	Lyophilized or Liquid
<b>Concentration:</b>	1mg/ml
<b>immunogen:</b>	KLH conjugated synthetic peptide derived from mouse HRH4:101-200/391<Extracellular>
<b>Lsotype:</b>	IgG
<b>Purification:</b>	affinity purified by Protein A
<b>Storage Buffer:</b>	0.01M TBS(pH7.4) with 1% BSA, 0.03% Proclin300 and 50% Glycerol.
<b>Storage:</b>	Store at -20 °C for one year. Avoid repeated freeze/thaw cycles. The lyophilized antibody is stable at room temperature for at least one month and for greater than a year when kept at -20°C. When reconstituted in sterile pH 7.4 0.01M PBS or diluent of antibody the antibody is stable for at least two weeks at 2-4 °C.
<b>PubMed:</b>	<a href="#">PubMed</a>
<b>Product Detail:</b>	Histamine is a ubiquitous messenger molecule released from mast cells, enterochromaffin-like cells, and neurons. Its various actions are mediated by a family of histamine receptors, which are a subset of the G-protein coupled receptor superfamily. This gene encodes a histamine receptor that is predominantly expressed in haematopoietic cells. The protein is thought to play a role in inflammation and allergy reponses. Multiple transcript variants encoding different isoforms have been found for

this gene. [provided by RefSeq, May 2009]

**Function:**

The H4 subclass of histamine receptors could mediate the histamine signals in peripheral tissues. Displays a significant level of constitutive activity (spontaneous activity in the absence of agonist)

**Subcellular Location:**

Cell membrane; Multi-pass membrane protein.

**Tissue Specificity:**

Expressed primarily in the bone marrow and eosinophils. Shows preferential distribution in cells of immunological relevance such as T-cells, dendritic cells, monocytes, mast cells, neutrophils. Also expressed in a wide variety of peripheral tissues, including the heart, kidney, liver, lung, pancreas, skeletal muscle, prostate, small intestine, spleen, testis, colon, fetal liver and lymph node.

**Similarity:**

Belongs to the G-protein coupled receptor 1 family.

**SWISS:**

Q91ZY2

**Gene ID:**

225192

**Database links:**

[Entrez Gene: 59340](#)Human

[Entrez Gene: 225192](#)Mouse

[Entrez Gene: 170704](#)Rat

[Omim: 606792](#)Human

[SwissProt: Q9H3N8](#)Human

[SwissProt: Q91ZY2](#)Mouse

[SwissProt: Q91ZY1](#)Rat

[Unigene: 287388](#)Human

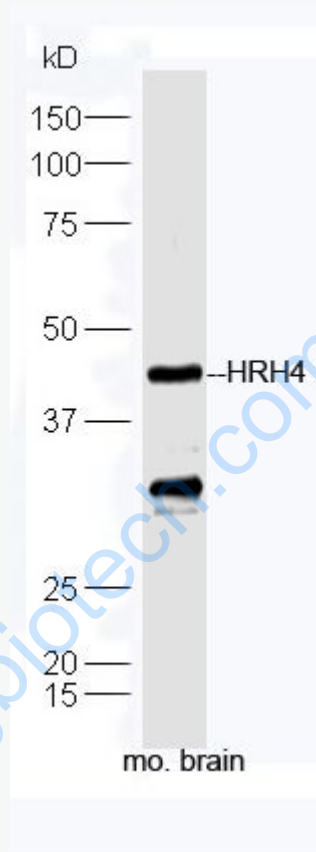
[Unigene: 207073](#)Mouse

[Unigene: 162272](#)Rat

**Important Note:**

This product as supplied is intended for research use only, not for use in human, therapeutic or diagnostic applications.

Picture:



Protein: brain(mouse) lysate at 40ug;

Primary: rabbit Anti-HRH4 (SL10993R) at 1:300;

Secondary: HRP conjugated Goat-Anti-rabbit IgG(SL10993R) at 1: 5000;

Predicted band size: 44 kD

Observed band size: 44 kD