



Rabbit Anti-ILVBL antibody

SL11014R

Product Name:	ILVBL
Chinese Name:	乙酰乳酸合成酶蛋白抗体
Alias:	Acetolactate synthase homolog; Acetolactate synthase like protein; Acetolactate synthase-like protein; AHAS; ILV2H; 209L8; IlvB (bacterial acetolactate synthase) like; IlvB like protein; IlvB-like protein; Ilvbl; ILVBL_HUMAN.
Organism Species:	Rabbit
Clonality:	Polyclonal
React Species:	Human,Mouse,Rat,Dog,Pig,Horse,
Applications:	WB=1:500-2000ELISA=1:500-1000IHC-P=1:400-800IHC-F=1:400-800Flow-Cyt=3ug/TestICC=1:100-500IF=1:100-500 (Paraffin sections need antigen repair) not yet tested in other applications. optimal dilutions/concentrations should be determined by the end user.
Molecular weight:	68kDa
Cellular localization:	The cell membrane
Form:	Lyophilized or Liquid
Concentration:	1mg/ml
immunogen:	KLH conjugated synthetic peptide derived from human ILVBL:301-400/632
Lsotype:	IgG
Purification:	affinity purified by Protein A
Storage Buffer:	0.01M TBS(pH7.4) with 1% BSA, 0.03% Proclin300 and 50% Glycerol.
Storage:	Store at -20 °C for one year. Avoid repeated freeze/thaw cycles. The lyophilized antibody is stable at room temperature for at least one month and for greater than a year when kept at -20°C. When reconstituted in sterile pH 7.4 0.01M PBS or diluent of antibody the antibody is stable for at least two weeks at 2-4 °C.
PubMed:	PubMed
Product Detail:	ILVBL is a 632 amino acid single-pass membrane protein that belongs to the TPP enzyme family. Expressed in the majority of tissues, ILVBL has the highest level of expression in heart, pancreas and placenta. ILVBL is highly homologous to several bacterial enzymes, including the B isozyme of the large catalytic subunit of E. coli acetoxy-acid synthase (AHAS) and the oxalyl-coA decarboxylase of O.

formigenes, that utilize thiamine pyrophosphate as a cofactor. ILVBL binds one magnesium ion and one thiamine pyrophosphate per subunit, and may catalyze the initial step in branched-chain amino acid biosynthesis. The gene encoding ILVBL maps to human chromosome 19p13.12 and mouse chromosome 10 C1.

Subcellular Location:

Membrane.

Tissue Specificity:

Expressed in all tissues tested, with highest expression in heart, pancreas and placenta.

Similarity:

Belongs to the TPP enzyme family.

SWISS:

A1LOT0

Gene ID:

10994

Database links:

[Entrez Gene: 10994](#)Human

[Omin: 605770](#)Human

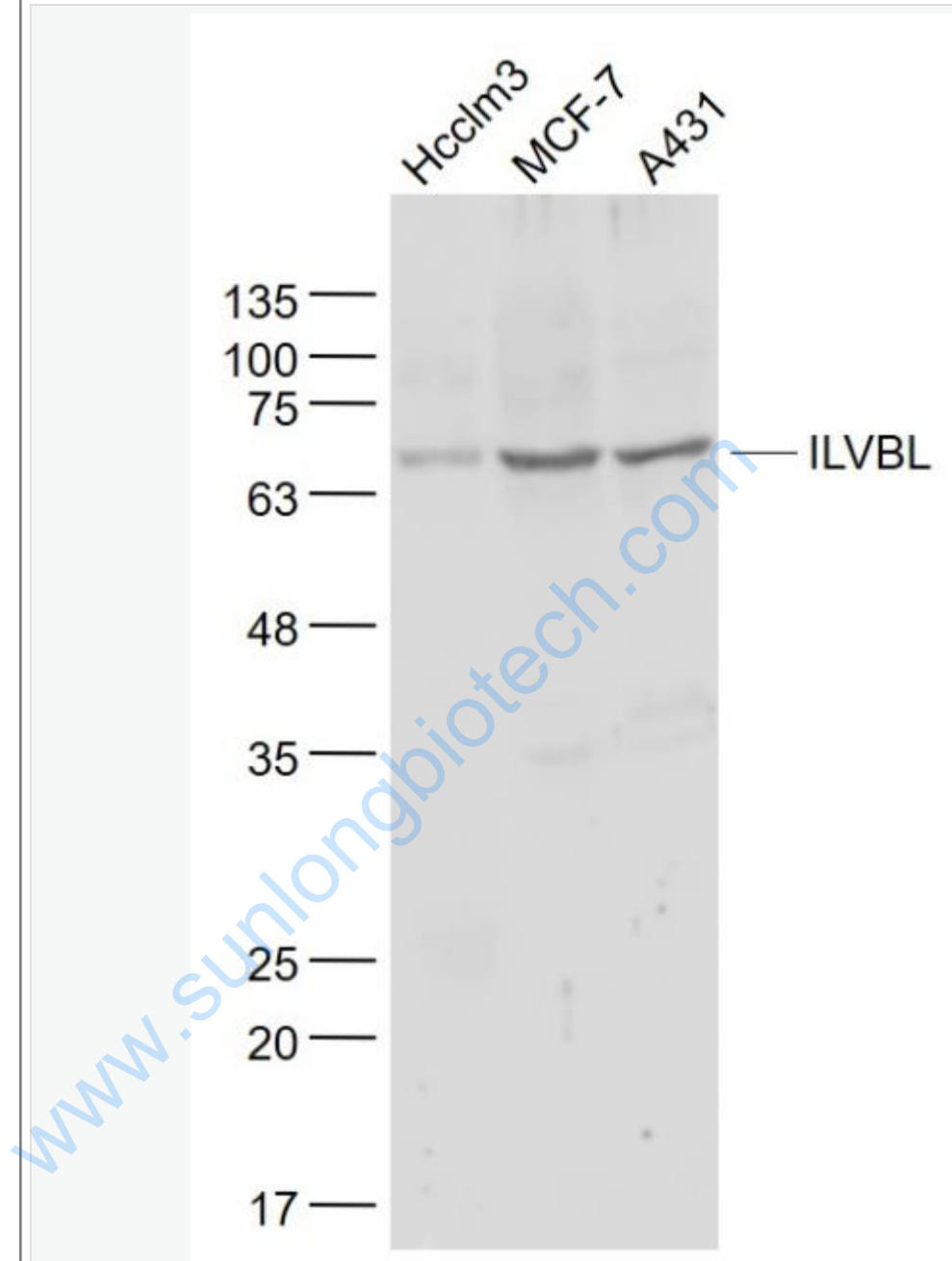
[SwissProt: A1LOT0](#)Human

[Unigene: 78880](#)Human

Important Note:

This product as supplied is intended for research use only, not for use in human, therapeutic or diagnostic applications.

Picture:



Sample:

Hcclm3(Human) Cell Lysate at 30 ug

MCF-7(Human) Cell Lysate at 30 ug

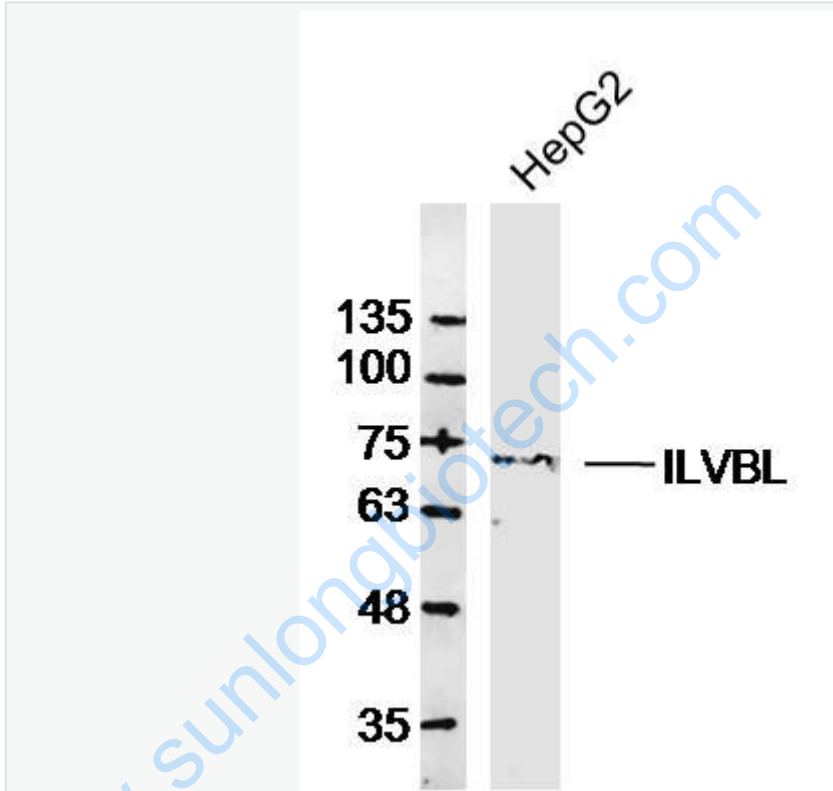
A431(Human) Cell Lysate at 30 ug

Primary: Anti- ILVBL (SL11014R) at 1/1000 dilution

Secondary: IRDye800CW Goat Anti-Rabbit IgG at 1/20000 dilution

Predicted band size: 68 kD

Observed band size: 68 kD



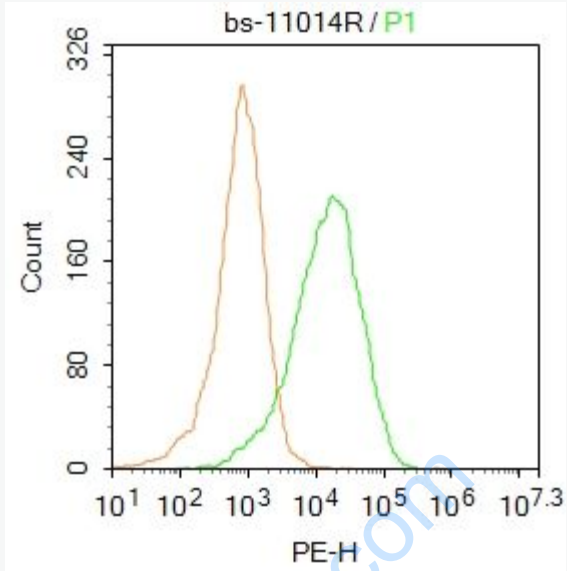
Sample: HepG2 Cell (Human) Lysate at 30 ug

Primary: Anti-ILVBL (SL11014R) at 1/300 dilution

Secondary: IRDye800CW Goat Anti-Rabbit IgG at 1/20000 dilution

Predicted band size: 68kD

Observed band size: 68kD



Blank control: HepG2.

Primary Antibody (green line): Rabbit Anti-ILVBL antibody (SL11014R)

Dilution: 1 μ g /10⁶ cells;

Isotype Control Antibody (orange line): Rabbit IgG .

Secondary Antibody : Goat anti-rabbit IgG-PE

Dilution: 1 μ g /test.

Protocol

The cells then incubated in 5%BSA to block non-specific protein-protein

interactions for 30 min at room temperature .Cells stained with Primary Antibody

for 30 min at room temperature. The secondary antibody used for 40 min at room

temperature. Acquisition of 20,000 events was performed.