



Rabbit Anti-MCP1 antibody

SL1101R

Product Name:	MCP1
Chinese Name:	单核细胞趋化蛋白1抗体
Alias:	MCP-1; monocyte chemotactic protein 1; CCL 2; CCL2; Chemokine C C motif ligand 2; Chemokine CC Motif Ligand 2; GDCF 2; GDCF 2 HC11; GDCF2; HC11; HSMCR30; JE; MCAF; MCP 1; MGC9434; Monocyte chemoattractant protein 1; Monocyte chemotactic and activating factor; Monocyte chemotactic protein 1; Monocyte secretory protein JE; SCYA2; Small inducible cytokine A2; Small inducible cytokine subfamily A Cys Cys member 2; SMC CF; SMCCF.
文献引用 PubMed :	<p>Specific References(6)SL1101R has been referenced in 6 publications.</p> <p>[IF=1.64]Guo, Wei, et al. "Transplantation of endothelial progenitor cells in treating rats with IgA nephropathy." BMC Nephrology 15.1 (2014): 110.IHC-P;Rat. PubMed:25012471</p> <p>[IF=5.01]Jeong, Keun-Yeong, et al. "Irradiation-induced localization of IL-12-expressing mesenchymal stem cells to enhance the curative effect in murine metastatic hepatoma." International Journal of Cancer (2015).WB;Mouse. PubMed:25639194</p> <p>[IF=4.60]Iwasa, Akihiko, et al. "Aromatase Controls Sjögrens Syndrome–Like Lesions through Monocyte Chemotactic Protein-1 in Target Organ and Adipose Tissue–Associated Macrophages." The American Journal of Pathology (2014).IHC-P;Mouse. PubMed:25447050</p> <p>[IF=2.50]Kuracha, Murali R., et al. "Patient-derived xenograft mouse models of pseudomyxoma peritonei recapitulate the human inflammatory tumor microenvironment." Cancer Medicine (2016).IHC-P;Mouse.</p>

	<p style="text-align: right;">PubMed:26833741</p> <p>[IF=2.21] Su, Xuesong, et al. "The PPARβ/δ Agonist GW501516 Attenuates Peritonitis in Peritoneal Fibrosis via Inhibition of TAK1–NFκB Pathway in Rats." <i>Inflammation</i> 37.3 (2014): 729-737. WB;Rat.</p> <p style="text-align: right;">PubMed:24337677</p> <p>[IF=3.25] Kugo, Hirona, et al. "Suppressive effects of dietary EPA-rich fish oil on the degradation of elastin fibers in the aortic wall in nicotine-administered mice." <i>Food & Function</i> (2017). IHC-F;Mouse.</p> <p style="text-align: right;">PubMed:28725903</p>
Organism Species:	Rabbit
Clonality:	Polyclonal
React Species:	Mouse,Rat,
Applications:	WB=1:500-2000ELISA=1:500-1000IHC-P=1:400-800IHC-F=1:400-800IF=1:100-500 (Paraffin sections need antigen repair) not yet tested in other applications. optimal dilutions/concentrations should be determined by the end user.
Molecular weight:	11kDa
Cellular localization:	Secretory protein
Form:	Lyophilized or Liquid
Concentration:	1mg/ml
immunogen:	KLH conjugated synthetic peptide derived from rat MCP-1:61-148/148
Lsotype:	IgG
Purification:	affinity purified by Protein A
Storage Buffer:	0.01M TBS(pH7.4) with 1% BSA, 0.03% Proclin300 and 50% Glycerol.
Storage:	Store at -20 °C for one year. Avoid repeated freeze/thaw cycles. The lyophilized antibody is stable at room temperature for at least one month and for greater than a year when kept at -20°C. When reconstituted in sterile pH 7.4 0.01M PBS or diluent of antibody the antibody is stable for at least two weeks at 2-4 °C.
PubMed:	PubMed
Product Detail:	Chemotactic factor that attracts monocytes and basophils but not neutrophils or eosinophils. Augments monocyte anti-tumor activity. Has been implicated in the pathogenesis of diseases characterized by monocytic infiltrates, like psoriasis, rheumatoid arthritis or atherosclerosis. May be involved in the recruitment of monocytes into the arterial wall during the disease process of atherosclerosis. Monomer or homodimer; in equilibrium. Binds to CCR2 and CCR4. Is tethered on endothelial cells by glycosaminoglycan (GAG) side chains of proteoglycans. Processing at the N-terminus can regulate receptor and targetcell selectivity. Deletion of the N-terminal residue converts it from an activator of basophil to an eosinophil chemoattractant. Genetic variations in CCL2 determine Mycobacterium tuberculosis susceptibility Belongs to the intercrine beta (chemokine CC) family. The MCP-1(the monocyte chemotactic protein1) has many pits that regulates the function toward sex to turn to

record the factor, it can induce to have relation with inflammation with the immunity various genes turn to record. The immunity MCP-1 set turns the male signal to mainly locate the afterbirth syrup inside.

Function:

Chemotactic factor that attracts monocytes and basophils but not neutrophils or eosinophils. Augments monocyte anti-tumor activity. Has been implicated in the pathogenesis of diseases characterized by monocytic infiltrates, like psoriasis, rheumatoid arthritis or atherosclerosis. May be involved in the recruitment of monocytes into the arterial wall during the disease process of atherosclerosis.

Subunit:

Monomer or homodimer; in equilibrium. Binds to CCR2 and CCR4. Is tethered on endothelial cells by glycosaminoglycan (GAG) side chains of proteoglycans.

Subcellular Location:

Secreted.

Post-translational modifications:

Processing at the N-terminus can regulate receptor and target cell selectivity. Deletion of the N-terminal residue converts it from an activator of basophil to an eosinophil chemoattractant.

Similarity:

Belongs to the intercrine beta (chemokine CC) family.

SWISS:

P14844

Gene ID:

24770

Database links:

[Entrez Gene: 6347](#) Human

[Entrez Gene: 20296](#) Mouse

[Entrez Gene: 24770](#) Rat

[Omim: 158105](#) Human

[SwissProt: P13500](#) Human

[SwissProt: P10148](#) Mouse

[SwissProt: P14844](#) Rat

[Unigene: 303649](#) Human

[Unigene: 290320](#) Mouse

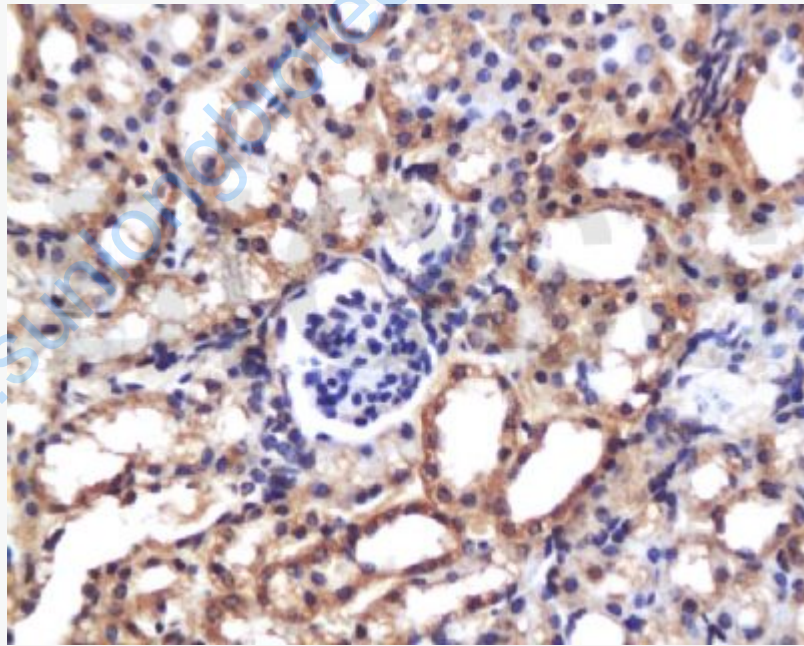
[Unigene: 4772](#) Rat

Important Note:

This product as supplied is intended for research use only, not for use in human, therapeutic or diagnostic applications.

Growth factors and hormones (Growth Factor and Hormones)

巨噬细胞趋化蛋白1(MCP1)具有多向性调节作用的核转录因子, 它可诱导与免疫和炎症有关的多基因转录.MCP-1免疫组化阳性信号主要位于胞浆内。



Picture:

Tissue/cell: mouse kidney tissue; 4% Paraformaldehyde-fixed and paraffin-embedded;

Antigen retrieval: citrate buffer (0.01M, pH 6.0), Boiling bathing for 15min; Block endogenous peroxidase by 3% Hydrogen peroxide for 30min; Blocking buffer

(normal goat serum,C-0005) at 37°C for 20 min;

Incubation: Anti-MCP-1 Polyclonal Antibody, Unconjugated(SL1101R) 1:200,
overnight at 4°C, followed by conjugation to the secondary antibody(SP-0023) and
DAB(C-0010) staining

www.sunlongbiotech.com