



Rabbit Anti-Kinesin/KIF5B antibody

SL11026R

Product Name:	Kinesin/KIF5B
Chinese Name:	驱动蛋白KNS1抗体
Alias:	Conventional kinesin heavy chain; KIF5B; Kinesin 1 (110-120kD); Kinesin family member 5B; Kinesin heavy chain; Kinesin heavy chain ubiquitous; Kinesin-1 heavy chain; KINH; KINH_HUMAN; KNS 1; KNS; KNS1; Ubiquitous kinesin heavy chain; UKHC.
Organism Species:	Rabbit
Clonality:	Polyclonal
React Species:	Human,Mouse,Rat,Chicken,Pig,Cow,Horse,Rabbit,
Applications:	ELISA=1:500-1000IHC-P=1:400-800IHC-F=1:400-800Flow-Cyt=1µg/TestICC=1:100-500IF=1:100-500 (Paraffin sections need antigen repair) not yet tested in other applications. optimal dilutions/concentrations should be determined by the end user.
Molecular weight:	106kDa
Cellular localization:	cytoplasmic
Form:	Lyophilized or Liquid
Concentration:	1mg/ml
immunogen:	KLH conjugated synthetic peptide derived from human Kinesin:561-660/963
Lsotype:	IgG
Purification:	affinity purified by Protein A
Storage Buffer:	0.01M TBS(pH7.4) with 1% BSA, 0.03% Proclin300 and 50% Glycerol.
Storage:	Store at -20 °C for one year. Avoid repeated freeze/thaw cycles. The lyophilized antibody is stable at room temperature for at least one month and for greater than a year when kept at -20°C. When reconstituted in sterile pH 7.4 0.01M PBS or diluent of antibody the antibody is stable for at least two weeks at 2-4 °C.
PubMed:	PubMed
Product Detail:	Structural proteins in Arabidopsis provide cellular stability, facilitate protein transportation within the cell and are essential for cell growth. Three types of molecular motors are involved in the organization, dynamics and transport processes associated with the cytoskeleton (1). They include myosin, which transports cargo along actin

filaments, and kinesin and dynein, which transport cargo along microtubules (1,2). These proteins regulate many cellular functions, including cell division and expansion, cell-to-cell communication, membrane trafficking and morphogenesis (2). In addition, the dynamin-like proteins are GTP-binding proteins involved in vesicle trafficking (3). Extensin is a structural protein that may be involved in cell wall assembly, while expansin is a cell wall loosening protein that induces stress relaxation and extension of cell walls and may control organ size, morphology and abscission (4,5). Also, xyloglucan (XG), a major hemicellulose in plants, is modified by the fucosyltransferase, XG FTase, which adds a terminal fucosyl residue to XG (6).

Function:

Microtubule-dependent motor required for normal distribution of mitochondria and lysosomes.

Subunit:

Oligomer composed of two heavy chains and two light chains. Interacts with GRIP1 and PPP1R42 (By similarity). Interacts with SYBU. Interacts with JAKMIP1. Interacts with PLEKHM2. Interacts with ECM29.

Subcellular Location:

Cytoplasm, cytoskeleton. Note=Uniformly distributed between soma and neurites in hippocampal neurons.

Similarity:

Belongs to the kinesin-like protein family. Kinesin subfamily. Contains 1 kinesin-motor domain.

SWISS:

P33176

Gene ID:

3799

Database links:

[Entrez Gene: 3799](#) Human

[Entrez Gene: 16573](#) Mouse

[Entrez Gene: 117550](#) Rat

[Omim: 602809](#) Human

[SwissProt: P33176](#) Human

[SwissProt: Q61768](#) Mouse

[SwissProt: Q2PQA9](#) Rat

[Unigene: 327736](#) Human

[Unigene: 644646](#) Human

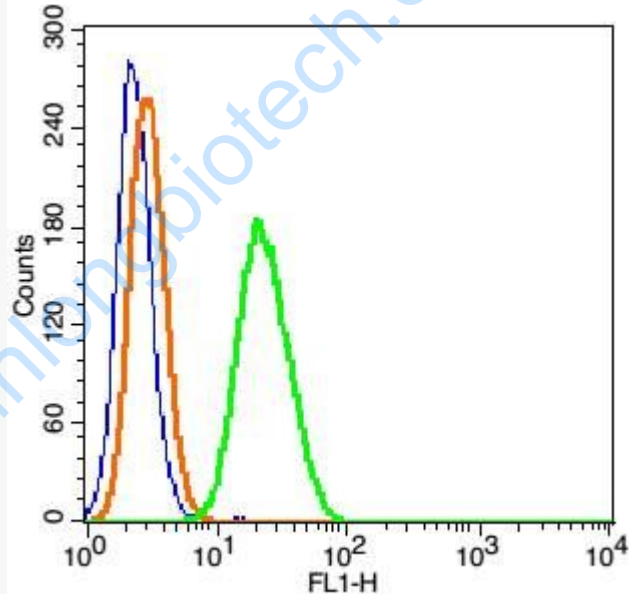
[Unigene: 223744](#) Mouse

[Unigene: 4046](#) Rat

Important Note:

This product as supplied is intended for research use only, not for use in human, therapeutic or diagnostic applications.

Picture:



Blank control(blue): Hela(fixed with 2% paraformaldehyde (10 min) and then permeabilized with ice-cold 90% methanol for 30 min on ice).

Primary Antibody: Rabbit Anti-KinesinKIF5B/FITC Conjugated antibody (SL11026R), Dilution: 1 μ g in 100 μ L 1X PBS containing 0.5% BSA;

Isotype Control Antibody: Rabbit IgG/FITC(orange) ,used under the same

	conditions.
--	-------------

www.sunlongbiotech.com