



Rabbit Anti-C1QL1 antibody

SL11045R

Product Name:	C1QL1
Chinese Name:	补体组分1q子成分样蛋白1抗体
Alias:	C1q related factor; C1q-related factor; C1q11; C1QRF; C1QRF_HUMAN; C1QTNF14; Complement component 1 Q subcomponent like 1; Complement component 1 Q subcomponent-like 1; CRF; Gliacolin.
Organism Species:	Rabbit
Clonality:	Polyclonal
React Species:	Human,Mouse,Rat,Dog,Pig,Cow,
Applications:	WB=1:500-2000ELISA=1:500-1000IHC-P=1:400-800IHC-F=1:400-800ICC=1:100-500IF=1:100-500 (Paraffin sections need antigen repair) not yet tested in other applications. optimal dilutions/concentrations should be determined by the end user.
Molecular weight:	25kDa
Cellular localization:	Secretory protein
Form:	Lyophilized or Liquid
Concentration:	1mg/ml
immunogen:	KLH conjugated synthetic peptide derived from human C1QL1:21-120/258
Lsotype:	IgG
Purification:	affinity purified by Protein A
Storage Buffer:	0.01M TBS(pH7.4) with 1% BSA, 0.03% Proclin300 and 50% Glycerol.
Storage:	Store at -20 °C for one year. Avoid repeated freeze/thaw cycles. The lyophilized antibody is stable at room temperature for at least one month and for greater than a year when kept at -20°C. When reconstituted in sterile pH 7.4 0.01M PBS or diluent of antibody the antibody is stable for at least two weeks at 2-4 °C.
PubMed:	PubMed
Product Detail:	C1q is part of the C1 enzyme complex, which activates the serum complement system. The residues of the globular domain in C1q share homology with several other secreted and membrane-bound collagen or collagen-like proteins, including pre-cerebellin and collagen types VIII and X, as well as the human and mouse genes encoding Apm1/BPB80 and AdipoQ/ACRP30, respectively. These various C1q-related proteins

are found in adipose serum, corneal endothelium, chondrocytes and cerebral Purkinje cells. C1qL1 (complement component 1, q subcomponent-like 1), also known as CRF or C1QRF, is a polypeptide with a hydrophobic signal sequence, a collagenous region and a globular domain at the carboxy terminus, which shares homology to the C1q globular domain. C1qL1 transcripts are most abundant in areas of the nervous system that are associated with motor function, including cerebral Purkinje cells, the pons, the accessory olivary nucleus, and the red nucleus. The similarity of mouse C1qL1 to human C1qL1 suggests a conserved and important role for the protein. In humans, the gene encoding C1qL1 maps to chromosome 17q21.

Function:

May regulate the number of excitatory synapses that are formed on hippocampus neurons. Has no effect on inhibitory synapses (By similarity).

Subunit:

Interacts with BAI3 (By similarity).

Subcellular Location:

Secreted.

Tissue Specificity:

Expressed in brainstem.

Similarity:

Contains 1 C1q domain.

Contains 1 collagen-like domain.

SWISS:

O75973

Gene ID:

10882

Database links:

[Entrez Gene: 10882](#)Human

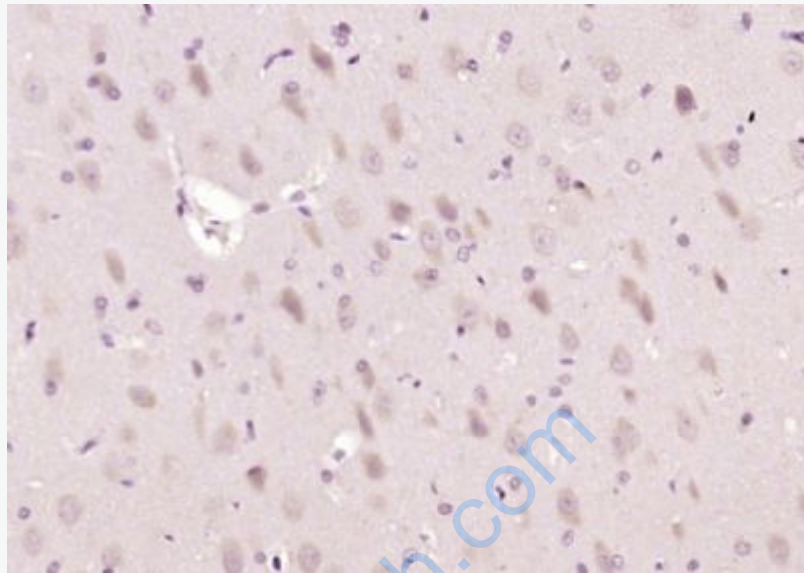
[Oimim: 611586](#)Human

[SwissProt: O75973](#)Human

[Unigene: 134012](#)Human

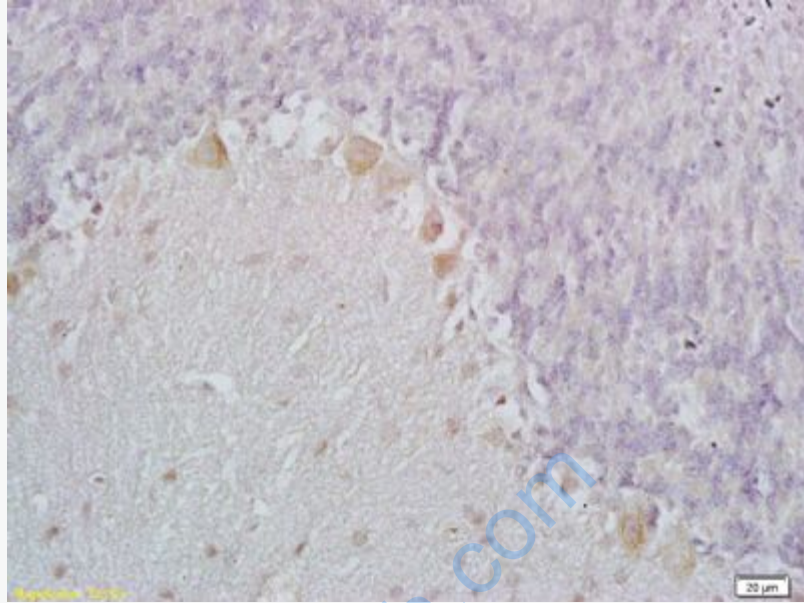
Important Note:

This product as supplied is intended for research use only, not for use in human, therapeutic or diagnostic applications.



Picture:

Paraformaldehyde-fixed, paraffin embedded (rat brain); Antigen retrieval by boiling in sodium citrate buffer (pH6.0) for 15min; Block endogenous peroxidase by 3% hydrogen peroxide for 20 minutes; Blocking buffer (normal goat serum) at 37°C for 30min; Antibody incubation with (C1QL1) Polyclonal Antibody, Unconjugated (SL11045R) at 1:200 overnight at 4°C, followed by operating according to SP Kit(Rabbit) (sp-0023) instructions and DAB staining.



Tissue/cell: mouse cerebel tissue; 4% Paraformaldehyde-fixed and paraffin-embedded;

Antigen retrieval: citrate buffer (0.01M, pH 6.0), Boiling bathing for 15min; Block endogenous peroxidase by 3% Hydrogen peroxide for 30min; Blocking buffer (normal goat serum,C-0005) at 37°C for 20 min;

Incubation: Anti-C1QL1 Polyclonal Antibody, Unconjugated(SL11045R) 1:200, overnight at 4°C, followed by conjugation to the secondary antibody(SP-0023) and DAB(C-0010) staining