



## Rabbit Anti-Cytokeratin 8 antibody

SL1106R

<b>Product Name:</b>	Cytokeratin 8
<b>Chinese Name:</b>	细胞角蛋白8抗体
<b>Alias:</b>	card2; Cardiac autoantigen 2 120kD; CK 8; CK8; CK-8; ck8; Cyk 8; cyk8; CYKER; Cytokeratin endo A; Cytokeratin-8; Cytokeratin8; DreK8; EndoA; k0; CYK8; k2c8; K2C8_HUMAN; k8; Keratin 8; Keratin type ii cytoskeletal 8; Keratin, type II cytoskeletal 8; Keratin-8; Keratin8; KO; Krt 2.8; Krt 8; krt8; KRT-8; MGC118110; MGC174782; MGC53564; MGC85764; sb:cb186; Type-II keratin Kb8.
<b>文献引用</b> PubMed :	<p><b>Specific References(3)</b> SL1106R has been referenced in 3 publications.</p> <p><b>[IF=0.50]</b>Zhang, Yongli, et al. "Calcitonin is expressed in the submaxillary glands of rats." <i>Bosnian Journal of Basic Medical Sciences</i> 14.4 (2014): 35-39.<b>Rat.</b>  <a href="#">PubMed:24579969</a></p> <p><b>[IF=3.15]</b>Qian, Xian, Xiaolu Shi, and Hongyi Wang. "Effect of paeoniflorin on the calcium ion concentration in salivary gland cells using confocal laser scanning microscopy." <i>Am J Transl Res</i> 8.9 (2016): 3678-3688.<b>IF(ICC);Rat.</b>  <a href="#">PubMed:27725850</a></p> <p><b>[IF=1.84]</b>Zhang, Pengfei, et al. "Proteome analysis of egg yolk after exposure to zinc oxide nanoparticles." <i>Theriogenology</i> (2017).<b>WB;Chicken.</b>  <a href="#">PubMed:0</a></p>
<b>Organism Species:</b>	Rabbit
<b>Clonality:</b>	Polyclonal
<b>React Species:</b>	Human,Mouse,Rat,Chicken,Dog,Pig,
<b>Applications:</b>	ELISA=1:500-1000IHC-P=1:400-800IHC-F=1:400-800Flow-Cyt=1ug/testIF=1:100-500 (Paraffin sections need antigen repair) not yet tested in other applications. optimal dilutions/concentrations should be determined by the end user.

<b>Molecular weight:</b>	53kDa
<b>Cellular localization:</b>	The nucleuscytoplasmic
<b>Form:</b>	Lyophilized or Liquid
<b>Concentration:</b>	1mg/ml
<b>immunogen:</b>	KLH conjugated synthetic peptide derived from human CK8:51-150/483
<b>Lsotype:</b>	IgG
<b>Purification:</b>	affinity purified by Protein A
<b>Storage Buffer:</b>	0.01M TBS(pH7.4) with 1% BSA, 0.03% Proclin300 and 50% Glycerol.
<b>Storage:</b>	Store at -20 °C for one year. Avoid repeated freeze/thaw cycles. The lyophilized antibody is stable at room temperature for at least one month and for greater than a year when kept at -20°C. When reconstituted in sterile pH 7.4 0.01M PBS or diluent of antibody the antibody is stable for at least two weeks at 2-4 °C.
<b>PubMed:</b>	<a href="#">PubMed</a>
<b>Product Detail:</b>	<p>This gene is a member of the type II keratin family clustered on the long arm of chromosome 12. Type I and type II keratins heteropolymerize to form intermediate-sized filaments in the cytoplasm of epithelial cells. The product of this gene typically dimerizes with keratin 18 to form an intermediate filament in simple single-layered epithelial cells. This protein plays a role in maintaining cellular structural integrity and also functions in signal transduction and cellular differentiation. Mutations in this gene cause cryptogenic cirrhosis. Alternatively spliced transcript variants have been found for this gene. [provided by RefSeq, Jan 2012].</p> <p><b>Function:</b> Together with KRT19, helps to link the contractile apparatus to dystrophin at the costameres of striated muscle.</p> <p><b>Subunit:</b> Heterotetramer of two type I and two type II keratins. KRT8 associates with KRT18. Associates with KRT20. Interacts with HCV core protein and PNN. When associated with KRT19, interacts with DMD. Interacts with TCHP. Interacts with APEX1.</p> <p><b>Subcellular Location:</b> Cytoplasm. Nucleus, nucleoplasm. Nucleus matrix.</p> <p><b>Tissue Specificity:</b> Observed in muscle fibers accumulating in the costameres of myoplasm at the sarcolemma membrane in structures that contain dystrophin and spectrin. Expressed in gingival mucosa and hard palate of the oral cavity.</p> <p><b>Post-translational modifications:</b> Phosphorylation on serine residues is enhanced during EGF stimulation and mitosis. Ser-74 phosphorylation plays an important role in keratin filament reorganization. O-glycosylated. O-GlcNAcylation at multiple sites increases solubility, and decreases stability by inducing proteasomal degradation. O-glycosylated (O-GlcNAcyated), in a cell cycle-dependent manner.</p>

**DISEASE:**

Defects in KRT8 are a cause of cirrhosis (CIRRH) [MIM:215600].

**Similarity:**

Belongs to the intermediate filament family.

**SWISS:**

P05787

**Gene ID:**

3856

**Database links:**

[Entrez Gene: 3856](#)Human

[Entrez Gene: 16691](#)Mouse

[Entrez Gene: 25626](#)Rat

[Omim: 148060](#)Human

[SwissProt: P05787](#)Human

[SwissProt: P11679](#)Mouse

[SwissProt: Q10758](#)Rat

[Unigene: 533782](#)Human

[Unigene: 708445](#)Human

[Unigene: 358618](#)Mouse

[Unigene: 11083](#)Rat

**Important Note:**

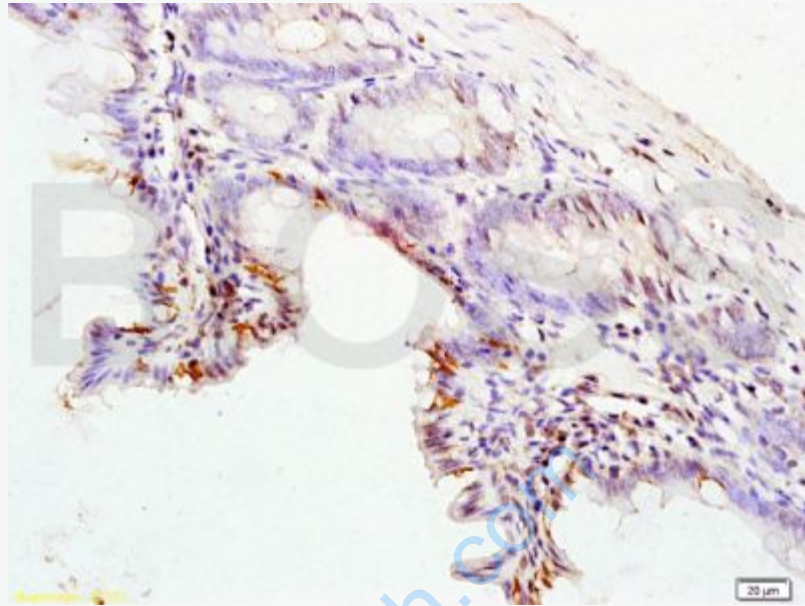
This product as supplied is intended for research use only, not for use in human, therapeutic or diagnostic applications.

**结构蛋白 (Structural Proteins)**

epithelial

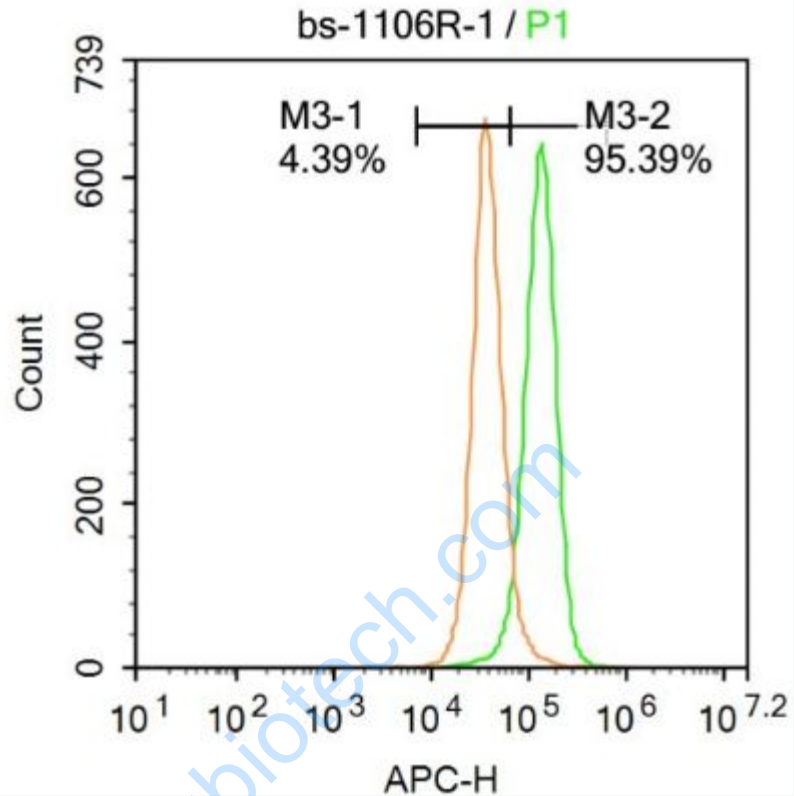
cells胞质中的骨架蛋白除微丝(肌动蛋白)、微管蛋白外, 主要是细胞角蛋白(cytokeratins, CK)。CK8也是epithelial

cells的特征性标记物:CK8存在于某些正常腺上皮及其Tumour, 包括许多导管上皮和腺上皮, 如结肠、胃、小肠、气管的上皮和尿路上皮。CK8主要用于腺癌和导管癌的诊断, 鳞状细胞癌一般不表达CK8。



**Picture:**

Tissue/cell: rat colon tissue; 4% Paraformaldehyde-fixed and paraffin-embedded;  
Antigen retrieval: citrate buffer ( 0.01M, pH 6.0 ), Boiling bathing for 15min; Block endogenous peroxidase by 3% Hydrogen peroxide for 30min; Blocking buffer (normal goat serum,C-0005) at 37°C for 20 min;  
Incubation: Anti-CK8 Polyclonal Antibody, Unconjugated(SL1106R) 1:200, overnight at 4°C, followed by conjugation to the secondary antibody(SP-0023) and DAB(C-0010) staining



Blank control: A431.

Primary Antibody (green line): Rabbit Anti-Cytokeratin 8 antibody (SL1106R)

Dilution:  $1\mu\text{g} / 10^6$  cells;

Isotype Control Antibody (orange line): Rabbit IgG .

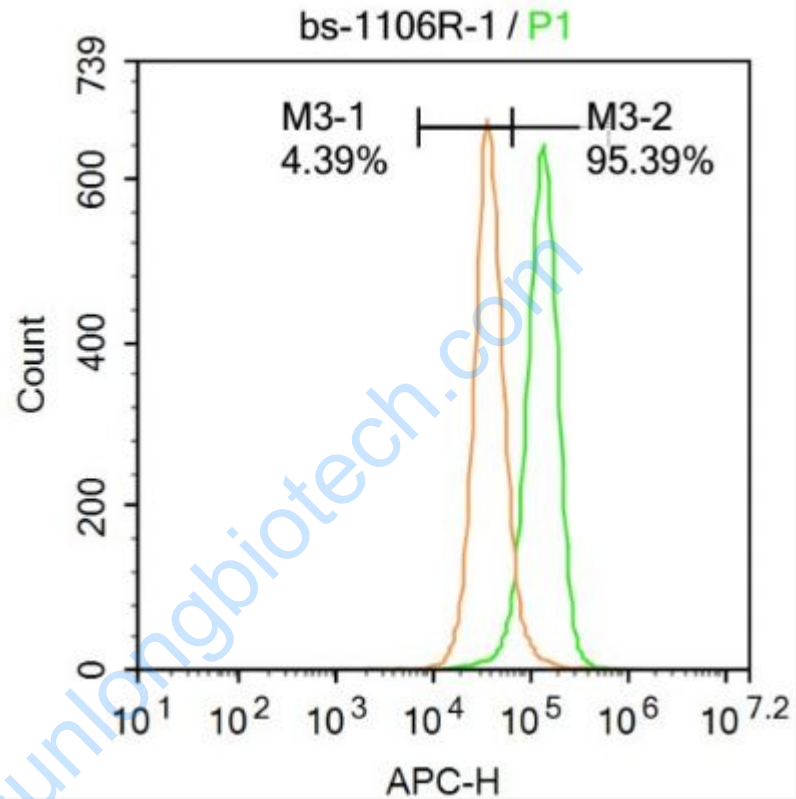
Secondary Antibody : Goat anti-rabbit IgG-PE

Dilution:  $1\mu\text{g} / \text{test}$ .

Protocol

The cells were fixed with 4% PFA (10min at room temperature) and then permeabilized with 90% ice-cold methanol for 20 min at  $-20^\circ\text{C}$ . The cells were then incubated in 5% BSA to block non-specific protein-protein interactions for 30 min at room temperature .Cells stained with Primary Antibody for 30 min at room

temperature. The secondary antibody used for 40 min at room temperature.  
Acquisition of 20,000 events was performed.



Blank control: A431.

Primary Antibody (green line): Rabbit Anti-Cytokeratin 8 antibody (SL1106R)

Dilution:  $1\mu\text{g} / 10^6$  cells;

Isotype Control Antibody (orange line): Rabbit IgG .

Secondary Antibody : Goat anti-rabbit IgG-AF647

Dilution:  $1\mu\text{g} / \text{test}$ .

Protocol

The cells were fixed with 4% PFA (10min at room temperature)and then permeabilized with 90% ice-cold methanol for 20 min at  $-20^\circ\text{C}$ . The cells were then

incubated in 5%BSA to block non-specific protein-protein interactions for 30 min at at room temperature .Cells stained with Primary Antibody for 30 min at room temperature. The secondary antibody used for 40 min at room temperature. Acquisition of 20,000 events was performed.