



Rabbit Anti-PTHLH antibody

SL1107R

Product Name:	PTHLH
Chinese Name:	甲状旁腺激素相关蛋白抗体
Alias:	Parathyroid Hormone Related Protein; Parathyroid Hormone-related Protein; HHM; MGC14611; Osteostatin; Parathyroid hormon like hormone isoform 2 preproprotein; Parathyroid hormone like hormone; Parathyroid hormone like hormone isoform 1 preproprotein; Parathyroid hormone like protein; Parathyroid hormone like related protein; Parathyroid Hormone Receptor 1; Parathyroid like protein; PLP; PTH related protein; PTH rP; PTHrP; PTHR; PTHRP.
Organism Species:	Rabbit
Clonality:	Polyclonal
React Species:	Human,Mouse,Rat,Dog,Pig,Cow,Horse,Rabbit,Sheep,
Applications:	ELISA=1:500-1000IHC-P=1:400-800IHC-F=1:400-800Flow-Cyt=1ug/testIF=1:100-500 (Paraffin sections need antigen repair) not yet tested in other applications. optimal dilutions/concentrations should be determined by the end user.
Molecular weight:	16kDa
Cellular localization:	The nucleuscytoplasmicSecretory protein
Form:	Lyophilized or Liquid
Concentration:	1mg/ml
immunogen:	KLH conjugated synthetic peptide derived from human PTHrP:101-177/177
Lsotype:	IgG
Purification:	affinity purified by Protein A
Storage Buffer:	0.01M TBS(pH7.4) with 1% BSA, 0.03% Proclin300 and 50% Glycerol.
Storage:	Store at -20 °C for one year. Avoid repeated freeze/thaw cycles. The lyophilized antibody is stable at room temperature for at least one month and for greater than a year when kept at -20°C. When reconstituted in sterile pH 7.4 0.01M PBS or diluent of antibody the antibody is stable for at least two weeks at 2-4 °C.
PubMed:	PubMed
Product Detail:	Parathyroid related protein (PTHLH), is a polypeptide hormone produced by almost every tissue of the body and is closely related to parathyroid hormone (PTH). It signals

through its receptor, PTHR1, regulating endochondral bone development and epithelial-mesenchymal interactions during the formation of the mammary glands and teeth. The receptor for this hormone (PTHrP) is responsible for most cases of humoral hypercalcemia of malignancy.

Function:

This is a receptor for parathyroid hormone and for parathyroid hormone-related peptide. The activity of this receptor is mediated by G proteins which activate adenylyl cyclase and also a phosphatidylinositol-calcium second messenger system.

Subunit:

PTHrP interacts with PTH1R (via N-terminal extracellular domain).

Subcellular Location:

Cytoplasmic, Nuclear and Secreted

Tissue Specificity:

Expressed in most tissues. Most abundant in kidney, bone and liver.

DISEASE:

Defects in PTH1R are the cause of Jansen metaphyseal chondrodysplasia (JMC) [MIM:156400]. JMC is a rare autosomal dominant disorder characterized by a short-limbed dwarfism associated with hypercalcemia and normal or low serum concentrations of the two parathyroid hormones.

Defects in PTH1R are the cause of chondrodysplasia Blomstrand type (BOCD) [MIM:215045]. BOCD is a severe skeletal dysplasia. Defects in PTH1R may be a cause of enchondromatosis multiple (ENCHOM) [MIM:166000]. Enchondromas are common benign cartilage tumors of bone. They can occur as solitary lesions or as multiple lesions in enchondromatosis (Ollier and Maffucci diseases). Clinical problems caused by enchondromas include skeletal deformity and the potential for malignant change to osteosarcoma.

Similarity:

Belongs to the G-protein coupled receptor 2 family.

SWISS:

P12272

Gene ID:

5744

Database links:

[Entrez Gene: 5744](#) Human

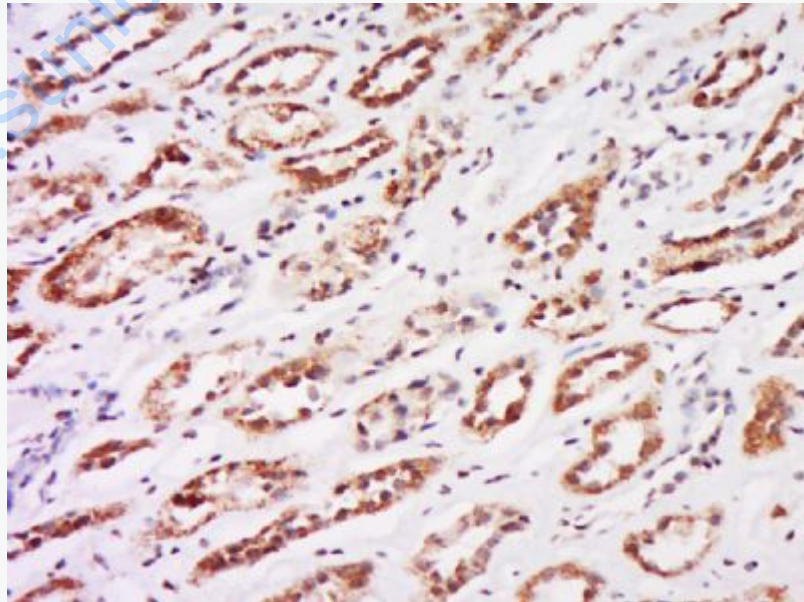
[Entrez Gene: 19227](#) Mouse

[Entrez Gene: 24695](#) Rat
[Omim: 168470](#) Human
[SwissProt: P12272](#) Human
[SwissProt: P22858](#) Mouse
[SwissProt: Q540C1](#) Mouse
[SwissProt: Q811S6](#) Mouse
[SwissProt: Q924X4](#) Mouse
[SwissProt: P13085](#) Rat
[Unigene: 89626](#) Human
[Unigene: 9750](#) Rat

Important Note:

This product as supplied is intended for research use only, not for use in human, therapeutic or diagnostic applications.

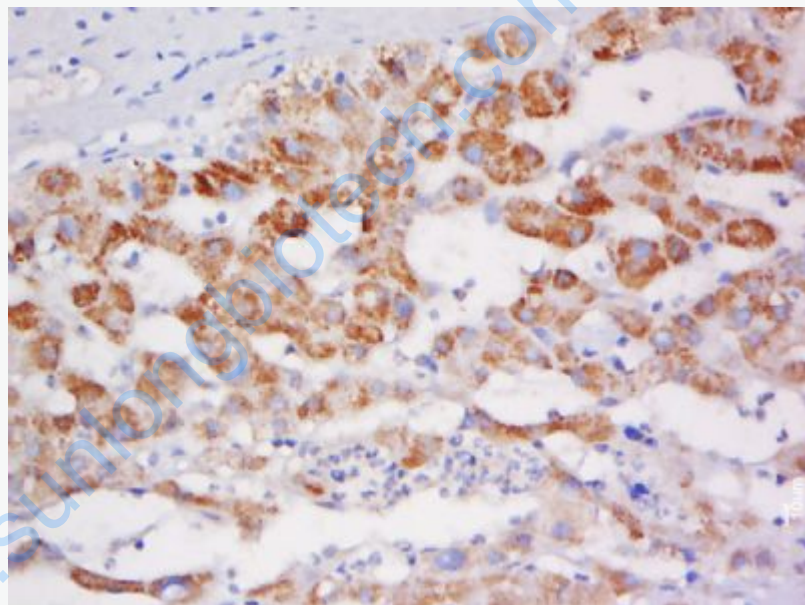
Picture:



Tissue/cell: human kidney tissue; 4% Paraformaldehyde-fixed and paraffin-embedded;

Antigen retrieval: citrate buffer (0.01M, pH 6.0), Boiling bathing for 15min; Block endogenous peroxidase by 3% Hydrogen peroxide for 30min; Blocking buffer (normal goat serum,C-0005) at 37°C for 20 min;

Incubation: Anti-PTHLH Polyclonal Antibody, Unconjugated(SL1107R) 1:500, overnight at 4°C, followed by conjugation to the secondary antibody(SP-0023) and DAB(C-0010) staining

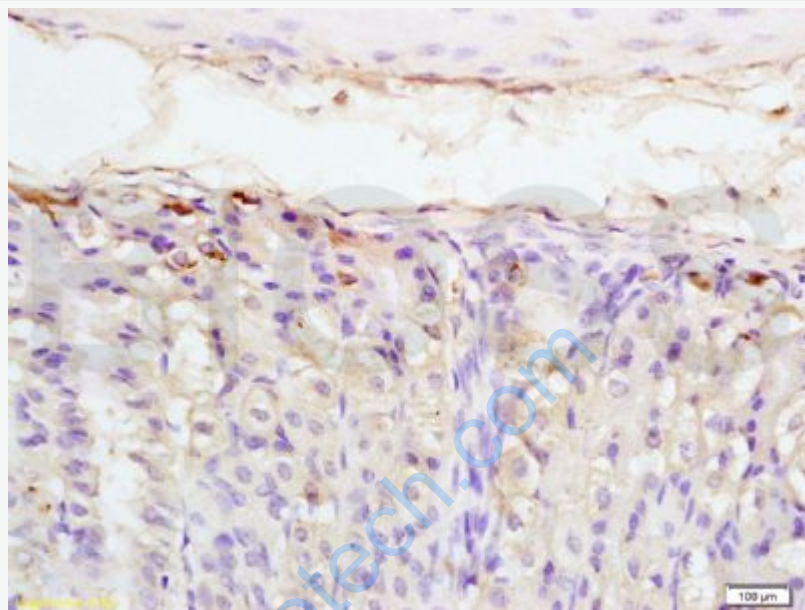


Tissue/cell: human liver cancer; 4% Paraformaldehyde-fixed and paraffin-embedded;

Antigen retrieval: citrate buffer (0.01M, pH 6.0), Boiling bathing for 15min; Block endogenous peroxidase by 3% Hydrogen peroxide for 30min; Blocking buffer (normal goat serum,C-0005) at 37°C for 20 min;

Incubation: Anti-PTHLH Polyclonal Antibody, Unconjugated(SL1107R) 1:500, overnight at 4°C, followed by conjugation to the secondary antibody(SP-0023) and

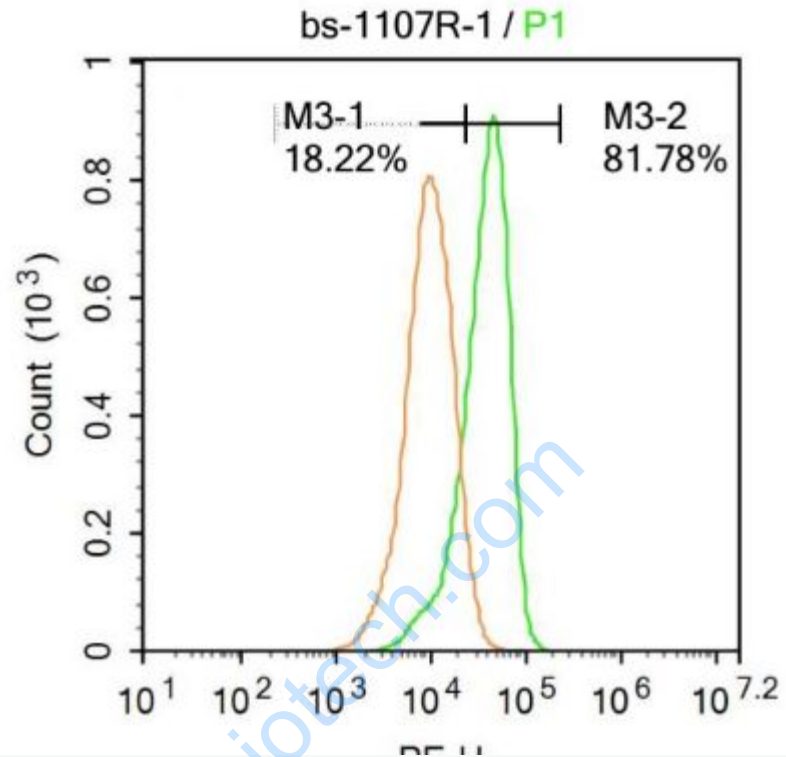
DAB(C-0010) staining



Tissue/cell: mouse stomach tissue; 4% Paraformaldehyde-fixed and paraffin-embedded;

Antigen retrieval: citrate buffer (0.01M, pH 6.0), Boiling bathing for 15min; Block endogenous peroxidase by 3% Hydrogen peroxide for 30min; Blocking buffer (normal goat serum,C-0005) at 37°C for 20 min;

Incubation: Anti-PTHrP/PTHLH Polyclonal Antibody, Unconjugated(SL1107R) 1:200, overnight at 4°C, followed by conjugation to the secondary antibody(SP-0023) and DAB(C-0010) staining



Blank control:A549.

Primary Antibody (green line): Rabbit Anti-PTHLH antibody (SL1107R)

Dilution: 1 μ g /10⁶ cells;

Isotype Control Antibody (orange line): Rabbit IgG .

Secondary Antibody : Goat anti-rabbit IgG-PE

Dilution: 1 μ g /test.

Protocol

The cells were fixed with 4% PFA (10min at room temperature)and then permeabilized with 20% PBST for 20 min at -20°C. The cells were then incubated in 5%BSA to block non-specific protein-protein interactions for 30 min at at room temperature .Cells stained with Primary Antibody for 30 min at room temperature.

The secondary antibody used for 40 min at room temperature. Acquisition of 20,000

	events was performed.
--	-----------------------

www.sunlongbiotech.com