



Rabbit Anti-NEGR1 antibody

SL11095R

| | |
|-------------------------------|----------------------------------------------------------------------------------------------------------------------------------------------------------------------------------------------------------------------------------------------------------------------------------------------------------------------------------------------------------------------------------------------------------------|
| Product Name: | NEGR1 |
| Chinese Name: | 神经生长调节蛋白1抗体 |
| Alias: | A kindred of IgLON; DMML2433; IgLON family member 4; IGLON4; KILON; Neuronal growth regulator 1; Neurotractin; Ntra; PRO4993; UNQ2433; NEGR1 HUMAN. |
| Organism Species: | Rabbit |
| Clonality: | Polyclonal |
| React Species: | Human,Mouse,Rat,Dog,Pig,Cow,Horse,Rabbit,Sheep, |
| Applications: | WB=1:500-2000ELISA=1:500-1000IHC-P=1:400-800IHC-F=1:400-800ICC=1:100-500IF=1:100-500 (Paraffin sections need antigen repair) not yet tested in other applications. optimal dilutions/concentrations should be determined by the end user. |
| Molecular weight: | 31kDa |
| Cellular localization: | The cell membrane |
| Form: | Lyophilized or Liquid |
| Concentration: | 1mg/ml |
| immunogen: | KLH conjugated synthetic peptide derived from human NEGR1:38-130/354 |
| Lsotype: | IgG |
| Purification: | affinity purified by Protein A |
| Storage Buffer: | 0.01M TBS(pH7.4) with 1% BSA, 0.03% Proclin300 and 50% Glycerol. |
| Storage: | Store at -20 °C for one year. Avoid repeated freeze/thaw cycles. The lyophilized antibody is stable at room temperature for at least one month and for greater than a year when kept at -20°C. When reconstituted in sterile pH 7.4 0.01M PBS or diluent of antibody the antibody is stable for at least two weeks at 2-4 °C. |
| PubMed: | PubMed |
| Product Detail: | NEGR1 is a 354 amino acid protein belonging to the IgLON family and immunoglobulin superfamily. NEGR1 may play a role in cell adhesion and regenerative axon sprouting in the mammalian brain and is highly expressed in adult hippocampus, cerebrum and brainstem, with much lower levels found in cerebellum. Localizing to the cell membrane at the glycosylphosphatidylinositol anchor (GPI) anchor, NEGR1 |

contains three Ig-like C2-type (immunoglobulin-like) domains. NEGR1 is encoded by a gene that maps to human chromosome 1p31.1, and is one of several loci associated with body mass index (BMI), possibly contributing to the development of obesity.

Function:

NEGR1 may be involved in cell-adhesion. May function as a trans-neural growth-promoting factor in regenerative axon sprouting in the mammalian brain.

Subcellular Location:

Cell membrane; Lipid-anchor, GPI-anchor

Similarity:

Belongs to the immunoglobulin superfamily. IgLON family.
Contains 3 Ig-like C2-type (immunoglobulin-like) domains.

SWISS:

Q7Z3B1

Gene ID:

257194

Database links:

[Entrez Gene: 257194](#)Human

[Entrez Gene: 320840](#)Mouse

[Entrez Gene: 59318](#)Rat

[Omir: 613173](#)Human

[SwissProt: Q7Z3B1](#)Human

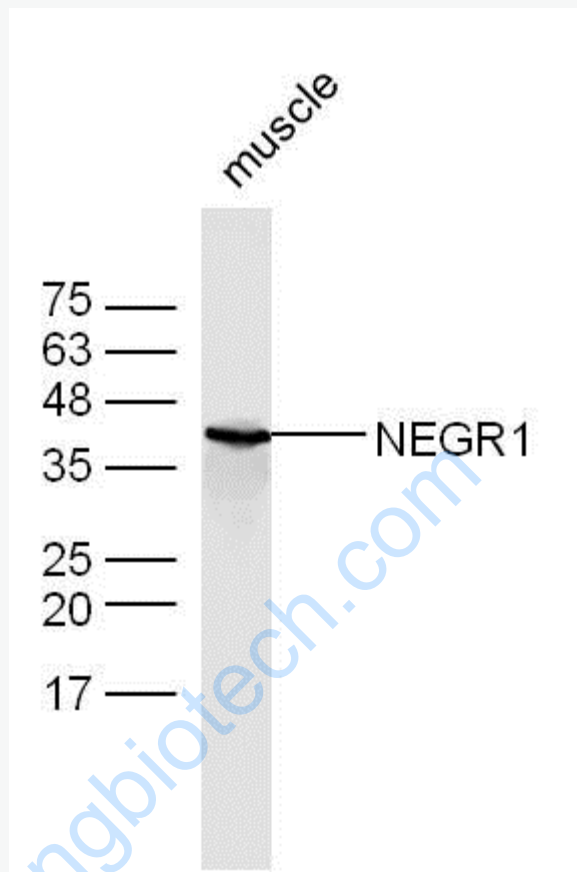
[SwissProt: D3Z4T6](#)Mouse

[SwissProt: D4A2V0](#)Rat

Important Note:

This product as supplied is intended for research use only, not for use in human, therapeutic or diagnostic applications.

Picture:



Sample:

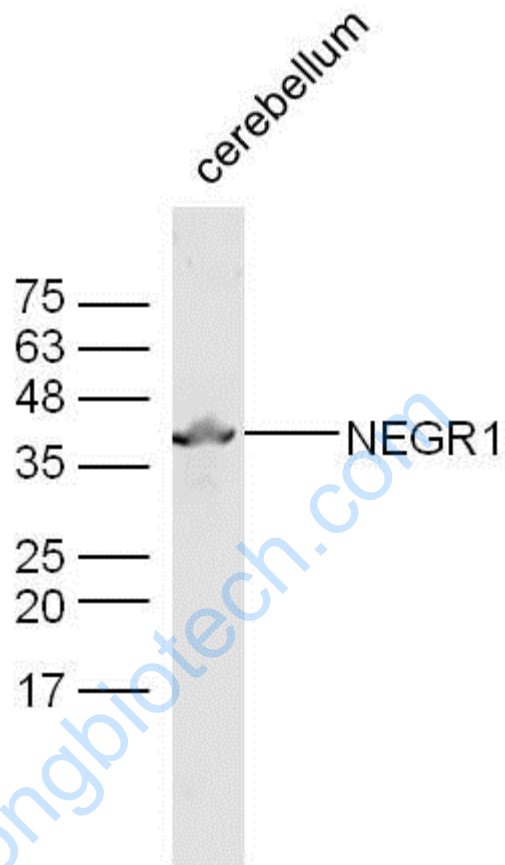
Muscle (Mouse) Lysate at 40 ug

Primary: Anti-NEGR1 (SL11095R) at 1/300 dilution

Secondary: IRDye800CW Goat Anti-Rabbit IgG at 1/20000 dilution

Predicted band size: 31 kD

Observed band size: 37 kD



Sample:

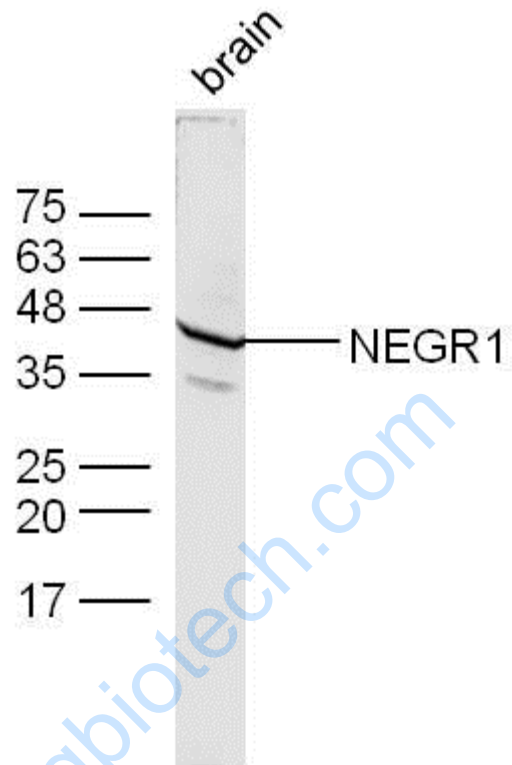
Cerebellum (Mouse) Lysate at 40 ug

Primary: Anti-NEGR1 (SL11095R) at 1/300 dilution

Secondary: IRDye800CW Goat Anti-Rabbit IgG at 1/20000 dilution

Predicted band size: 31 kD

Observed band size: 37 kD



Sample:

Brain (Mouse) Lysate at 40 ug

Primary: Anti-NEGR1 (SL11095R) at 1/300 dilution

Secondary: IRDye800CW Goat Anti-Rabbit IgG at 1/20000 dilution

Predicted band size: 31 kD

Observed band size: 37 kD