



Rabbit Anti-NIPAL2 antibody

SL11096R

Product Name:	NIPAL2
Chinese Name:	NIPAL2蛋白抗体
Alias:	NIPA like domain containing 2; NIPAL2; NPAL2; NPAL2 HUMAN.
Organism Species:	Rabbit
Clonality:	Polyclonal
React Species:	Human,Mouse,Rat,Pig,Cow,Horse,Rabbit,Sheep,
Applications:	WB=1:500-2000ELISA=1:500-1000 not yet tested in other applications. optimal dilutions/concentrations should be determined by the end user.
Molecular weight:	41kDa
Cellular localization:	The cell membrane
Form:	Lyophilized or Liquid
Concentration:	1mg/ml
immunogen:	KLH conjugated synthetic peptide derived from human NIPAL2:1-100/368
Lsotype:	IgG
Purification:	affinity purified by Protein A
Storage Buffer:	0.01M TBS(pH7.4) with 1% BSA, 0.03% Proclin300 and 50% Glycerol.
Storage:	Store at -20 °C for one year. Avoid repeated freeze/thaw cycles. The lyophilized antibody is stable at room temperature for at least one month and for greater than a year when kept at -20°C. When reconstituted in sterile pH 7.4 0.01M PBS or diluent of antibody the antibody is stable for at least two weeks at 2-4 °C.
PubMed:	PubMed
Product Detail:	Non-imprinted in Prader-Willi/Angelman syndrome (NIPA) proteins are highly conserved receptors or transporters. A family known as the NIPA-like domain containing (NPAL) proteins are closely related to the NIPA proteins, but most are uncharacterized and their functions are unknown. NPAL2 (NIPA-like domain containing 2), also known as NIPAL2, is a 368 amino acid multi-pass membrane protein belonging to the NIPA family and is encoded by a gene located on human chromosome 8. Human chromosome 8 consists of nearly 146 million base pairs, houses more than 800 genes and is associated with a variety of diseases and malignancies. Schizophrenia,

bipolar disorder, Trisomy 8, Pfeiffer syndrome, congenital hypothyroidism, Waardenburg syndrome and some leukemias and lymphomas are thought to occur as a result of defects in specific genes that map to chromosome 8.

Function:

NPAL2 is a multi-pass membrane protein and it belongs to the NIPA family. The exact function of NPAL2 remains unknown.

Subcellular Location:

Membrane; Multi-pass membrane protein

Similarity:

Belongs to the NIPA family.

SWISS:

Q9H841

Gene ID:

79815

Database links:

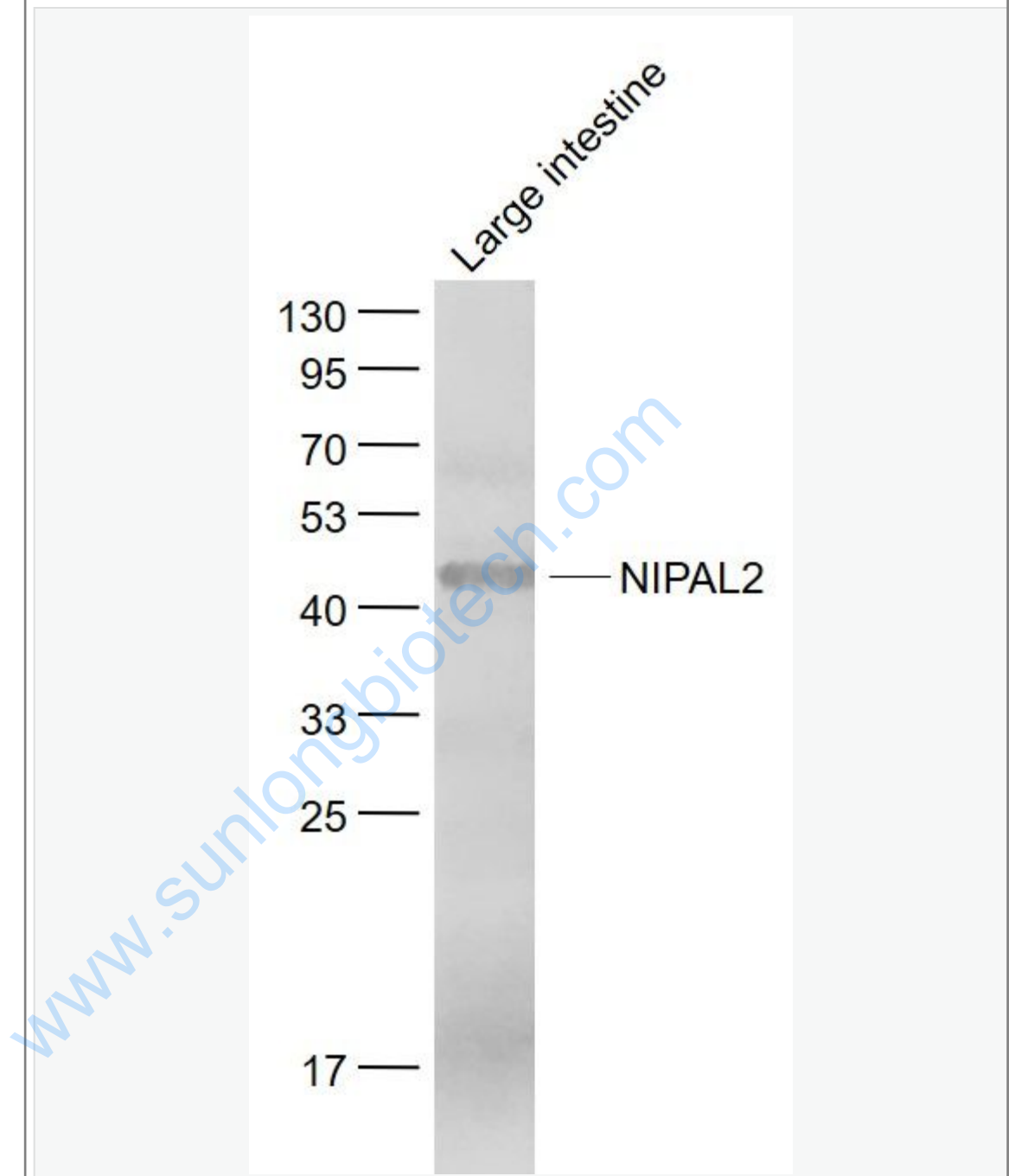
[Entrez Gene: 79815](#)Human

[SwissProt: Q9H841](#)Human

Important Note:

This product as supplied is intended for research use only, not for use in human, therapeutic or diagnostic applications.

Picture:



Sample:

Large intestine (Mouse) Lysate at 40 ug

Primary: Anti- NIPAL2 (SL11096R) at 1/1000 dilution

Secondary: IRDye800CW Goat Anti-Rabbit IgG at 1/20000 dilution

	<p>Predicted band size: 41 kD</p>
--	-----------------------------------

	<p>Observed band size: 42 kD</p>
--	----------------------------------

www.sunlongbiotech.com