



Rabbit Anti-Neurexin II alpha antibody

SL11104R

Product Name:	Neurexin II alpha
Chinese Name:	轴突蛋白2抗体
Alias:	Neurexin 2; Neurexin-2; Neurexin2; Neurexin II; Neurexin II alpha; NRXN 2; NRXN-2; NRXN2; NRX2A_HUMAN.
Organism Species:	Rabbit
Clonality:	Polyclonal
React Species:	Human,Mouse,Rat,Dog,Pig,Cow,Horse,Sheep,
Applications:	ELISA=1:500-1000IHC-P=1:400-800IHC-F=1:400-800ICC=1:100-500IF=1:100-500 (Paraffin sections need antigen repair) not yet tested in other applications. optimal dilutions/concentrations should be determined by the end user.
Molecular weight:	182kDa
Cellular localization:	The cell membrane
Form:	Lyophilized or Liquid
Concentration:	1mg/ml
immunogen:	KLH conjugated synthetic peptide derived from human Neurexin 2:971-1070/1712<Extracellular>
Lsotype:	IgG
Purification:	affinity purified by Protein A
Storage Buffer:	0.01M TBS(pH7.4) with 1% BSA, 0.03% Proclin300 and 50% Glycerol.
Storage:	Store at -20 °C for one year. Avoid repeated freeze/thaw cycles. The lyophilized antibody is stable at room temperature for at least one month and for greater than a year when kept at -20°C. When reconstituted in sterile pH 7.4 0.01M PBS or diluent of antibody the antibody is stable for at least two weeks at 2-4 °C.
PubMed:	PubMed
Product Detail:	This gene encodes a member of the neurexin gene family. The products of these genes function as cell adhesion molecules and receptors in the vertebrate nervous system. These genes utilize two promoters. The majority of transcripts are produced from the upstream promoter and encode alpha-neurexin isoforms while a smaller number of transcripts are produced from the downstream promoter and encode beta-neuresin

isoforms. The alpha-neurexins contain epidermal growth factor-like (EGF-like) sequences and laminin G domains, and have been shown to interact with neurexophilins. The beta-neurexins lack EGF-like sequences and contain fewer laminin G domains than alpha-neurexins. Alternative splicing and the use of alternative promoters may generate thousands of transcript variants (PMID: 12036300, PMID: 11944992).[provided by RefSeq, Jun 2010]

Function:

Neurexin 2 alpha belongs to the Neurexin family, a group of neuronal proteins that function as cell adhesion molecules during synaptogenesis and intracellular signaling. Mammalian genomes contain just three neurexin genes. However, many neurexin isoforms may be expressed through the use of two alternative promoters and alternative splicing at up to five different positions.

Subunit:

The laminin G-like domain 1 binds to NXP1. Specific isoforms bind to alpha-dystroglycan. Interacts with INADL.

Subcellular Location:

Membrane; single-pass type I membrane protein.

Tissue Specificity:

Predominantly expressed in brain.

Similarity:

Belongs to the neurexin family.
Contains 3 EGF-like domains.
Contains 6 laminin G-like domains.

SWISS:

Q9P2S2

Gene ID:

9379

Database links:

[Entrez Gene: 9379](#)Human

[Entrez Gene: 18190](#)Mouse

[Entrez Gene: 116595](#)Rat

[SwissProt: Q9P2S2](#)Human

[SwissProt: Q63374](#)Rat

[Unigene: 372938](#)Human

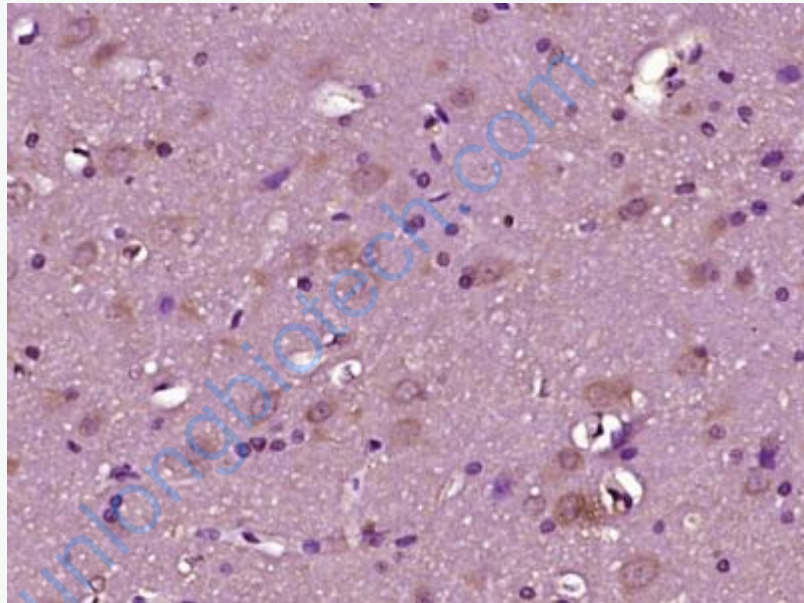
[Unigene: 329616](#)Mouse

[Unigene: 414022](#)Mouse

[Unigene: 11282](#)Rat

Important Note:

This product as supplied is intended for research use only, not for use in human, therapeutic or diagnostic applications.



Picture:

Paraformaldehyde-fixed, paraffin embedded (rat brain tissue); Antigen retrieval by boiling in sodium citrate buffer (pH6.0) for 15min; Block endogenous peroxidase by 3% hydrogen peroxide for 20 minutes; Blocking buffer (normal goat serum) at 37°C for 30min; Antibody incubation with (Neurexin II alpha) Polyclonal Antibody, Unconjugated (SL11104R) at 1:400 overnight at 4°C, followed by operating according to SP Kit(Rabbit) (sp-0023) instructions and DAB staining.