



## Rabbit Anti-PCDH18 antibody

SL11112R

<b>Product Name:</b>	PCDH18
<b>Chinese Name:</b>	原钙粘附蛋白18抗体
<b>Alias:</b>	PCD18_HUMAN; PCDH18; PCDH68L; protocadherin 18; protocadherin 68-like protein; Protocadherin-18.
<b>Organism Species:</b>	Rabbit
<b>Clonality:</b>	Polyclonal
<b>React Species:</b>	Human,Mouse,Rat,Dog,Cow,Horse,Rabbit,Sheep,
<b>Applications:</b>	WB=1:500-2000ELISA=1:500-1000IHC-P=1:400-800IHC-F=1:400-800ICC=1:100-500IF=1:100-500 (Paraffin sections need antigen repair) not yet tested in other applications. optimal dilutions/concentrations should be determined by the end user.
<b>Molecular weight:</b>	123kDa
<b>Cellular localization:</b>	The cell membrane
<b>Form:</b>	Lyophilized or Liquid
<b>Concentration:</b>	1mg/ml
<b>immunogen:</b>	KLH conjugated synthetic peptide derived from human PCDH18:381-480/1135<Extracellular>
<b>Lsotype:</b>	IgG
<b>Purification:</b>	affinity purified by Protein A
<b>Storage Buffer:</b>	0.01M TBS(pH7.4) with 1% BSA, 0.03% Proclin300 and 50% Glycerol.
<b>Storage:</b>	Store at -20 °C for one year. Avoid repeated freeze/thaw cycles. The lyophilized antibody is stable at room temperature for at least one month and for greater than a year when kept at -20°C. When reconstituted in sterile pH 7.4 0.01M PBS or diluent of antibody the antibody is stable for at least two weeks at 2-4 °C.
<b>PubMed:</b>	<a href="#">PubMed</a>
<b>Product Detail:</b>	Protocadherins are a large family of cadherin-like cell adhesion proteins that are involved in the establishment and maintenance of neuronal connections in the brain. There are three protocadherin gene clusters, designated alpha, beta and gamma, all of which contain multiple tandemly arranged genes. PCDH18 (protocadherin 18), also known as PCDH68L, is a 1,135 amino acid single-pass type I cell membrane protein

that contains six cadherin domains and a cytoplasmic tail that differs from classical cadherins. Expressed ubiquitously with highest expression in ovary and lung, PCDH18 interacts with Dab1 and functions as a potential calcium-dependent adhesion protein that may be involved in the establishment of cell-cell connections in the brain. Multiple isoforms of PCDH18 exist due to alternative splicing events.

**Function:**

Potential calcium-dependent cell-adhesion protein.

**Subcellular Location:**

Cell membrane.

**Tissue Specificity:**

Expressed in all tissues, with highest expression in lung and ovary.

**Similarity:**

Contains 6 cadherin domains.

**SWISS:**

Q9HCL0

**Gene ID:**

54510

**Database links:**

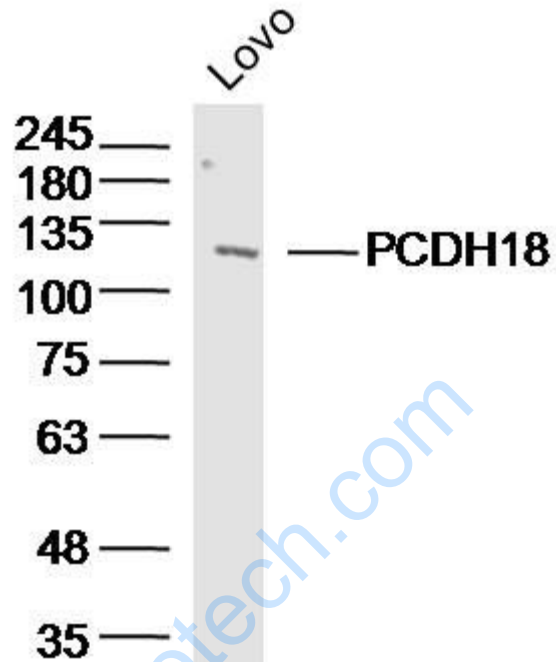
[Entrez Gene: 54510](#)Human

[SwissProt: Q9HCL0](#)Human

**Important Note:**

This product as supplied is intended for research use only, not for use in human, therapeutic or diagnostic applications.

Picture:



Sample: Lovo (human)cell Lysate at 40 ug

Primary: Anti- PCDH18(SL11112R) at 1/300 dilution

Secondary: IRDye800CW Goat Anti-Rabbit IgG at 1/20000 dilution

Predicted band size: 123 kD

Observed band size:123 kD